

SESSION GACI: une lésion calcifiée

Pr MOTREFF Pascal
CHRU Clermont-Ferrand

Dr Mariama Akodad
CHRU Montpellier

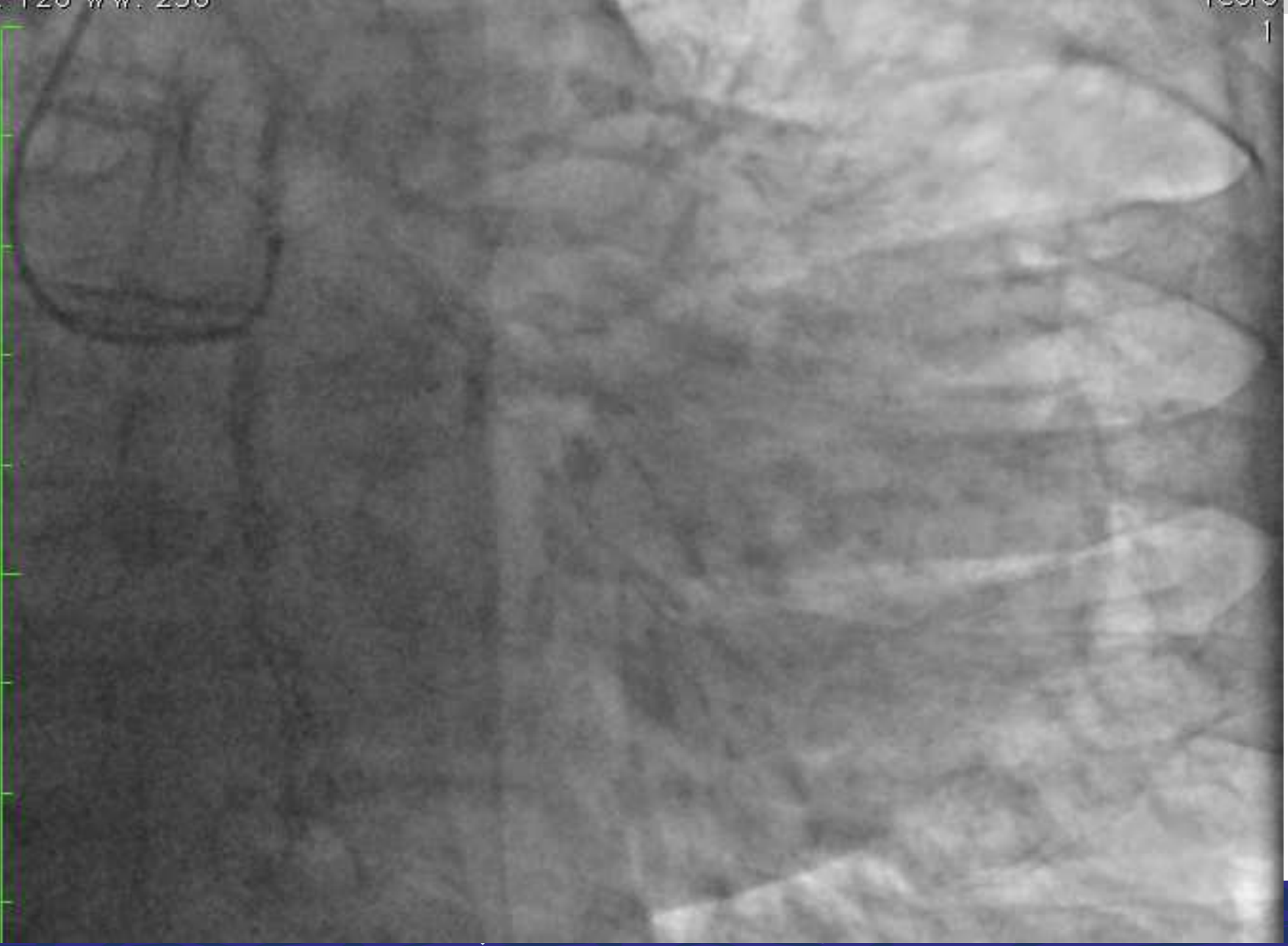


30-31 Janvier 1^{er} Février 2019

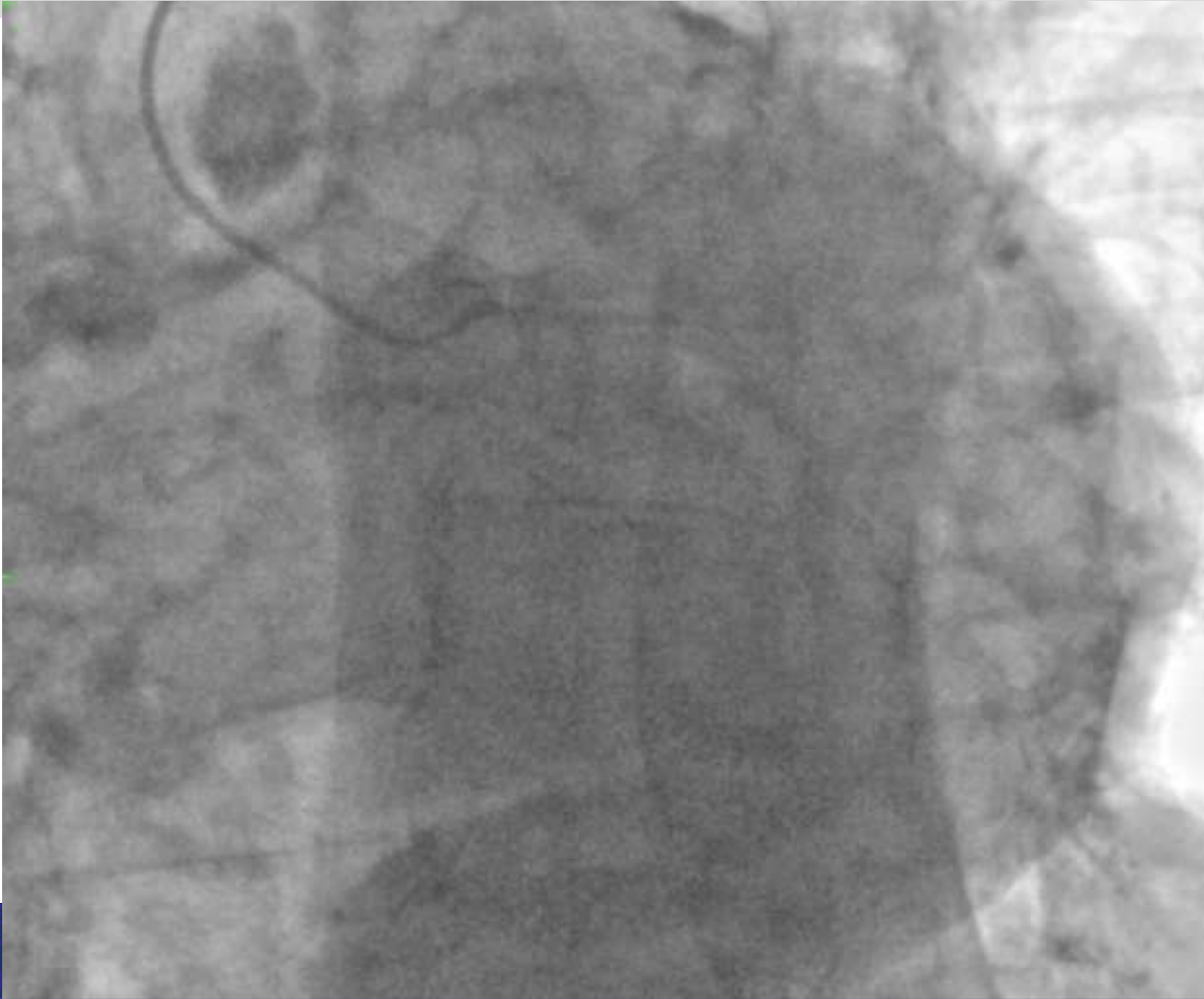


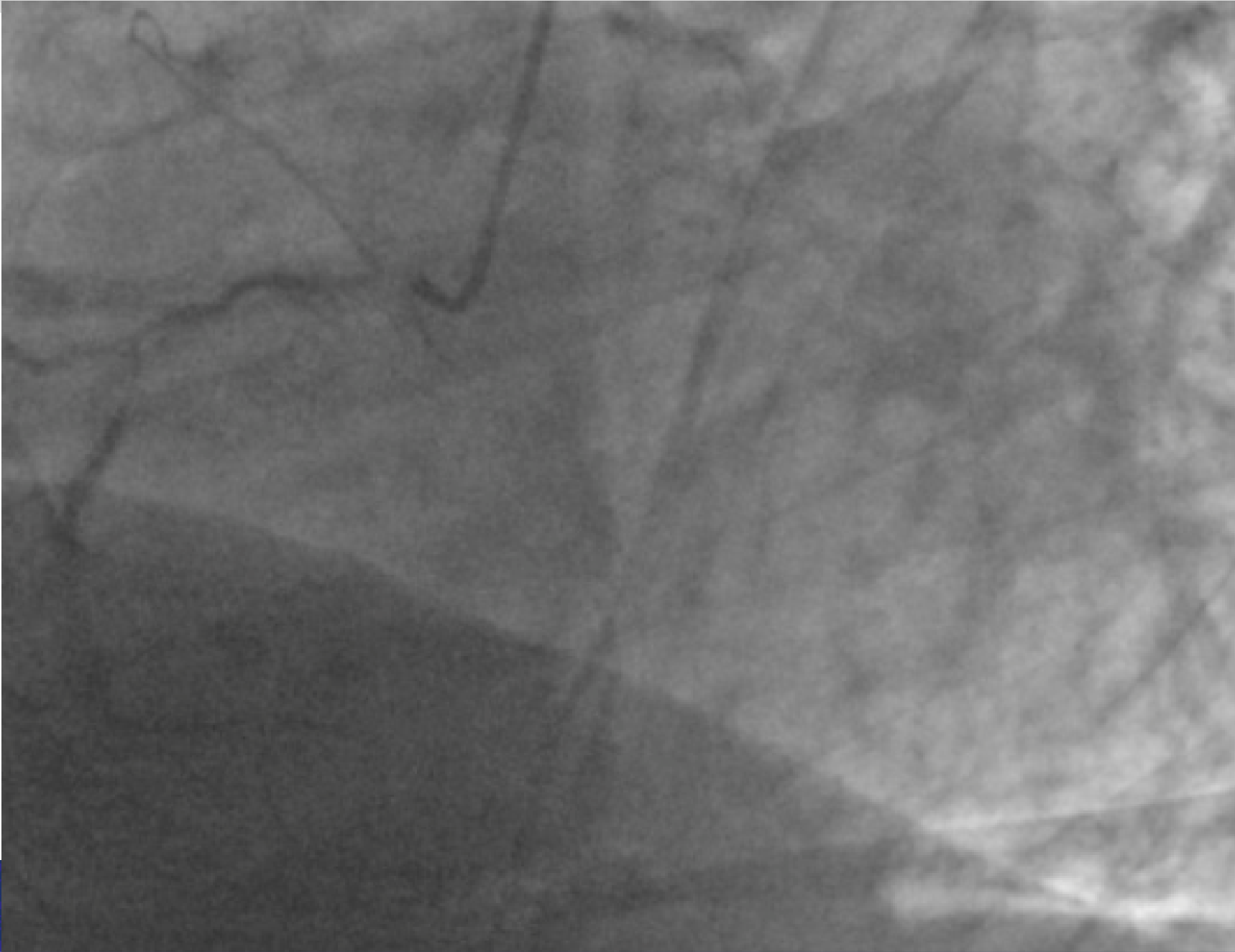
MR D. 77 ANS

- Choc cardiogénique Droit Sevré d'amines J7
- Perte d'autonomie, marche avec une canne
- Diabète/AOMI
- ECG: séquelle inférieure
- ETT: FE 10%, ITV 9, VD très altéré









CAT?

Angioplastie

Pontages

Médical

DISCUSSION MEDICO-CHIRURGICALE

⇒ Syntax: 29

SYNTAX Score II


Decision making -between CABG and PCI- guided by II to be endorsed by the Heart Team.

PCI

SYNTAX Score II: 67.0
 PCI 4 Year Mortality: 79.6 %

CABG

SYNTAX Score II: 51.0
 CABG 4 Year Mortality: 33.8 %

Patient related factors			Cardiac related factors		
Age ¹ (years)	77	0.51	NYHA	III	.2958358
Gender	male	0	CCS class 4 angina ⁸	no	0
Renal impairment ² <small>See calculator below for creatinine clearance</small>	severe (CC <50)	.8592256	LV function	very poor (LVEF 20% or less)	.9346919
Extracardiac arteriopathy ³	no	0	Recent MI ⁹	yes	.1528943
Poor mobility ⁴	yes	.2407181	Pulmonary hypertension ¹⁰	moderate (PA systolic 31-55 mmHg)	.1788899
Previous cardiac surgery	no	0	Operation related factors		
Chronic lung disease ⁵	no	0	Urgency ¹¹	elective	0
Active endocarditis ⁶	no	0	Weight of the intervention ¹²	isolated CABG	0
Critical preoperative state ⁷	yes	1.086517	Surgery on thoracic aorta	no	0
Diabetes on insulin	yes	.3542749			
EuroSCORE II	33.00 %				
 Note: This is the 2011 EuroSCORE II			Calculate	Clear	

Treatment recommendation ⓘ: CABG or PCI

HEART TEAM= ATC TCG

30-31 Janvier 1^{er} Février 2019

DISCUSSION PM

