

# GESTION DES COMPLICATIONS CORONAIRES

## Perte de branche fille

Dr DROGOUL Laurent  
Polyclinique St George Nice  
Centre Cardio-Thoracique Monaco

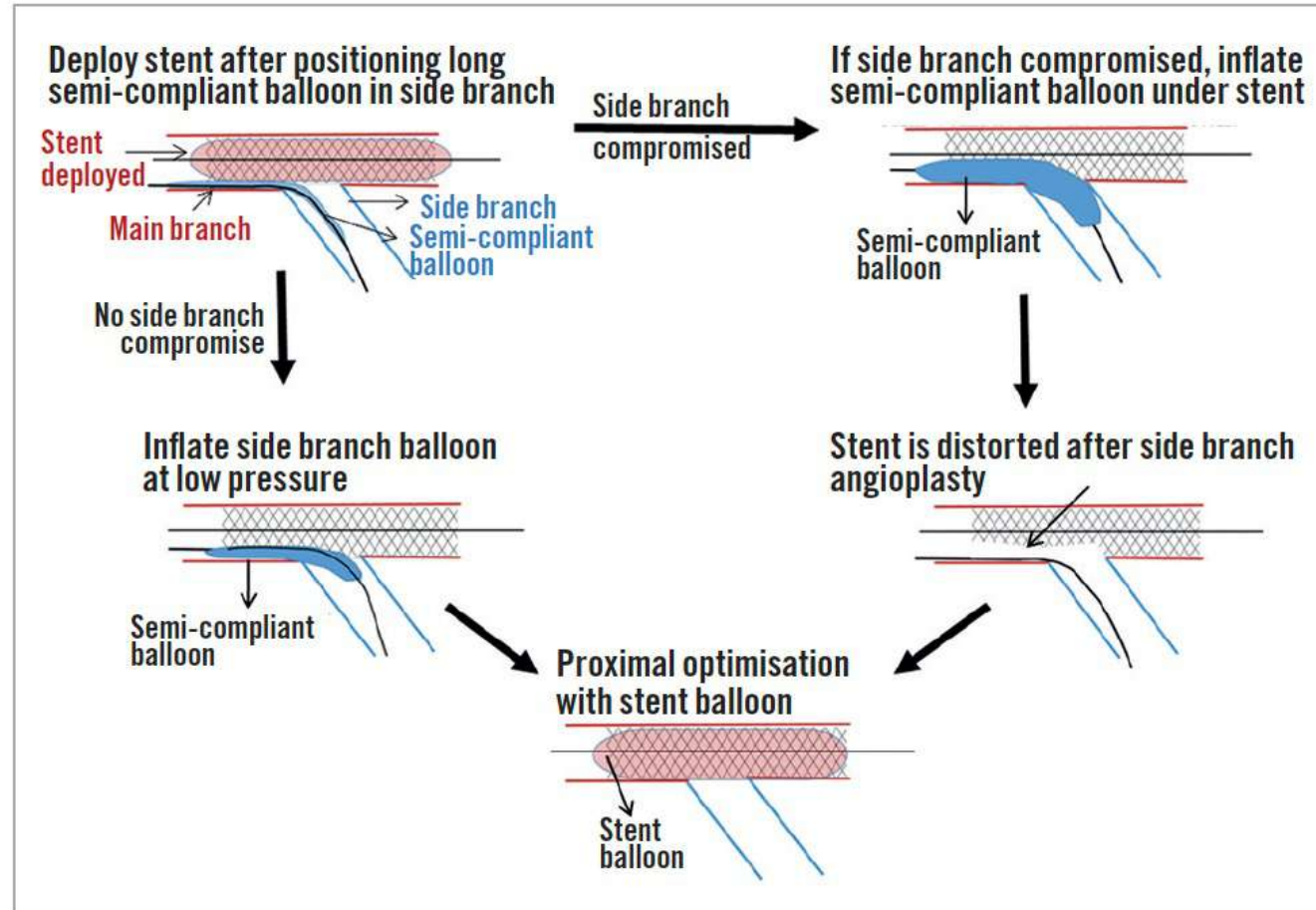
Perte de branche fille :

Prévention ++++

***Protection de la branche fille par un guide***

# Perte de branche file :prévention dans les cas extrêmes

## *Protection par ballon*

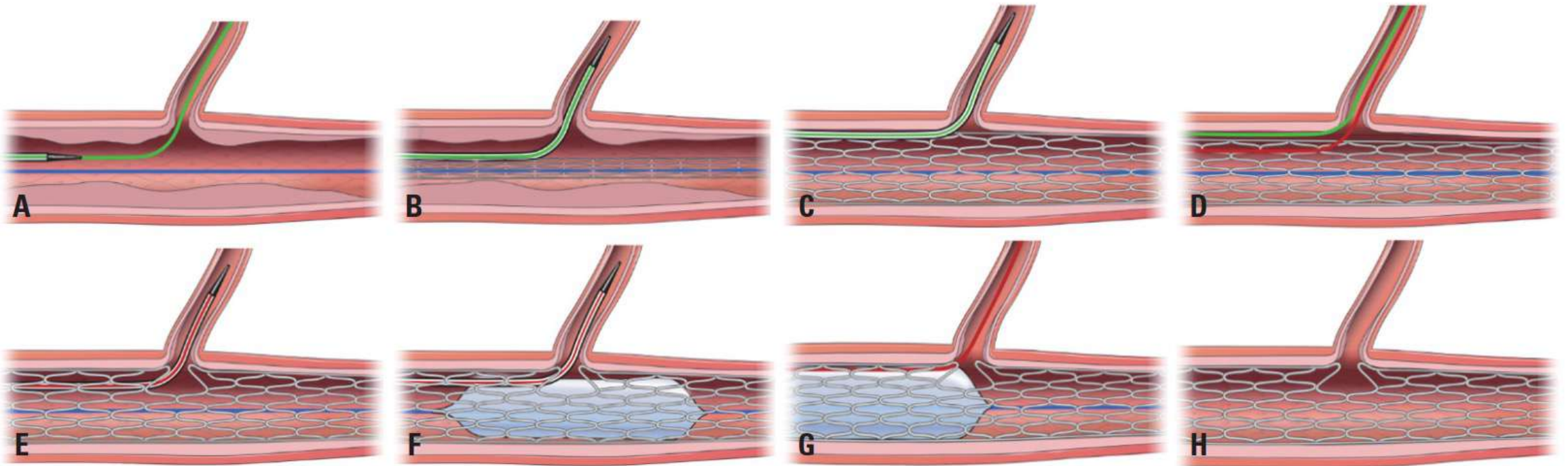


*Risque de piéger la ballon ,rupture , déstructuration du stent MB*

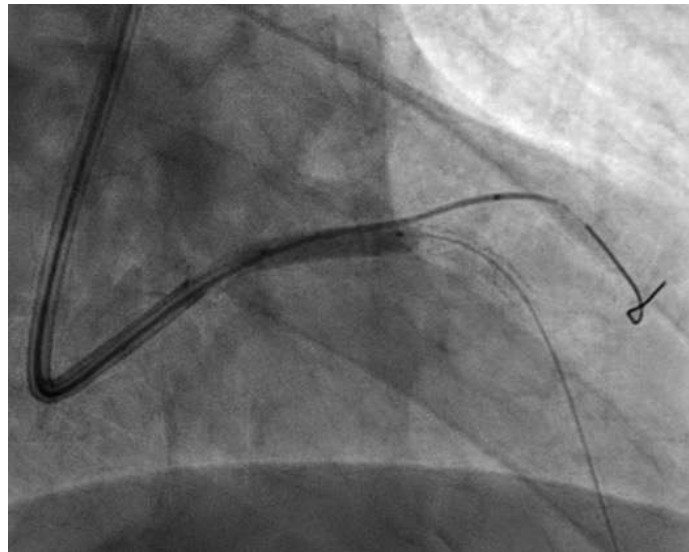
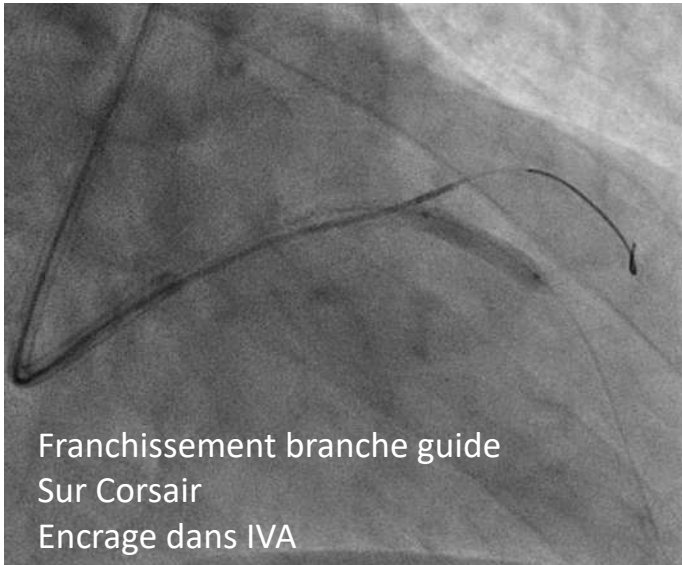
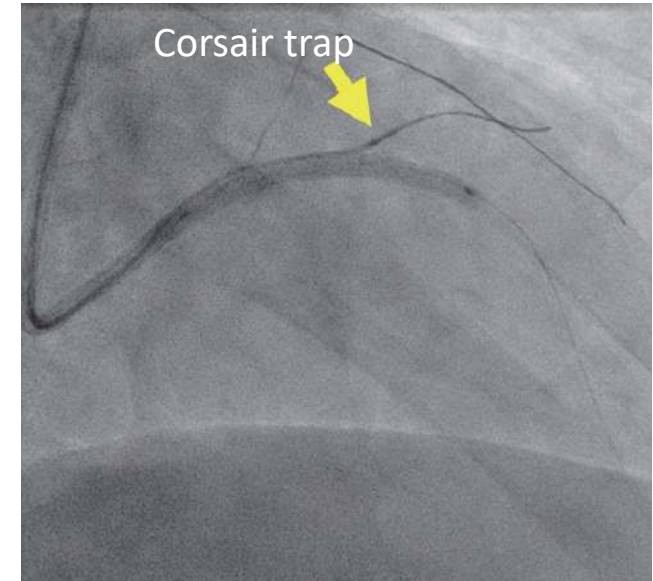
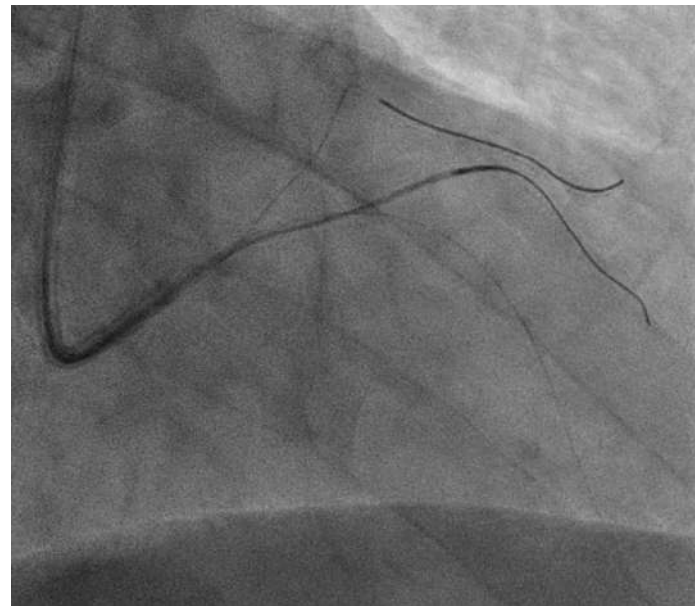
## Perte de branche fille :prévention dans les cas extrêmes

*Protection par microcathéter Corsair*

## Consecutive Jailed- and Kissing-Corsair Technique: Side Branch Protection and Dilation during Stent Implantation

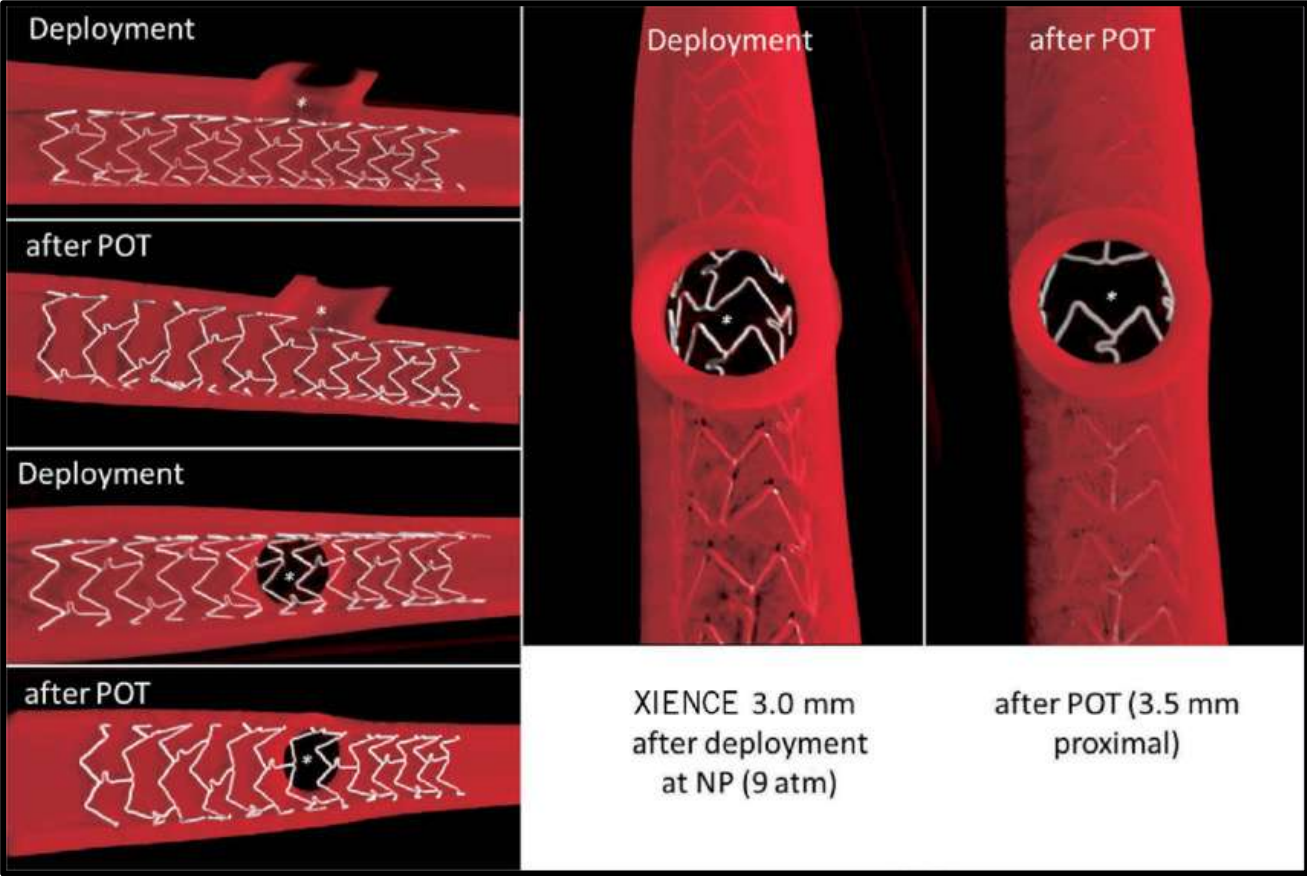


Consecutive Jailed- and Kissing-Corsair Technique:  
Side Branch Protection and Dilatation during Stent Implantation



# Perte de branche fille ... CAT

**1) POT +++**



# Perte de branche fille ... CAT

***2) Refranchir au guide ...  
lequel et quelle préformation ?***

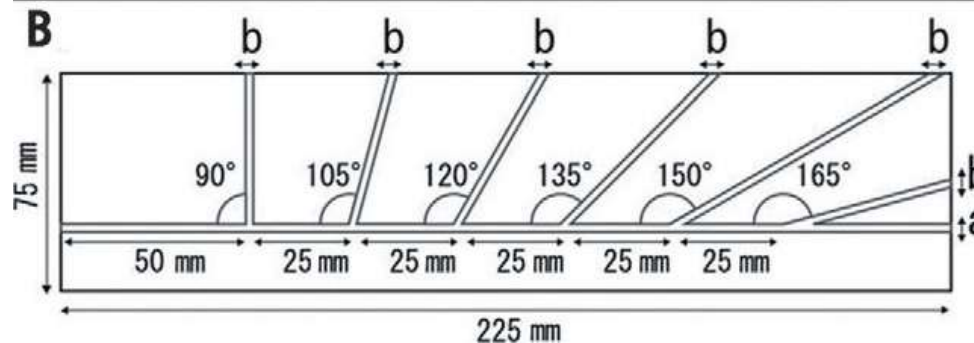
***2bis) utiliser un micocathéter double lumière***

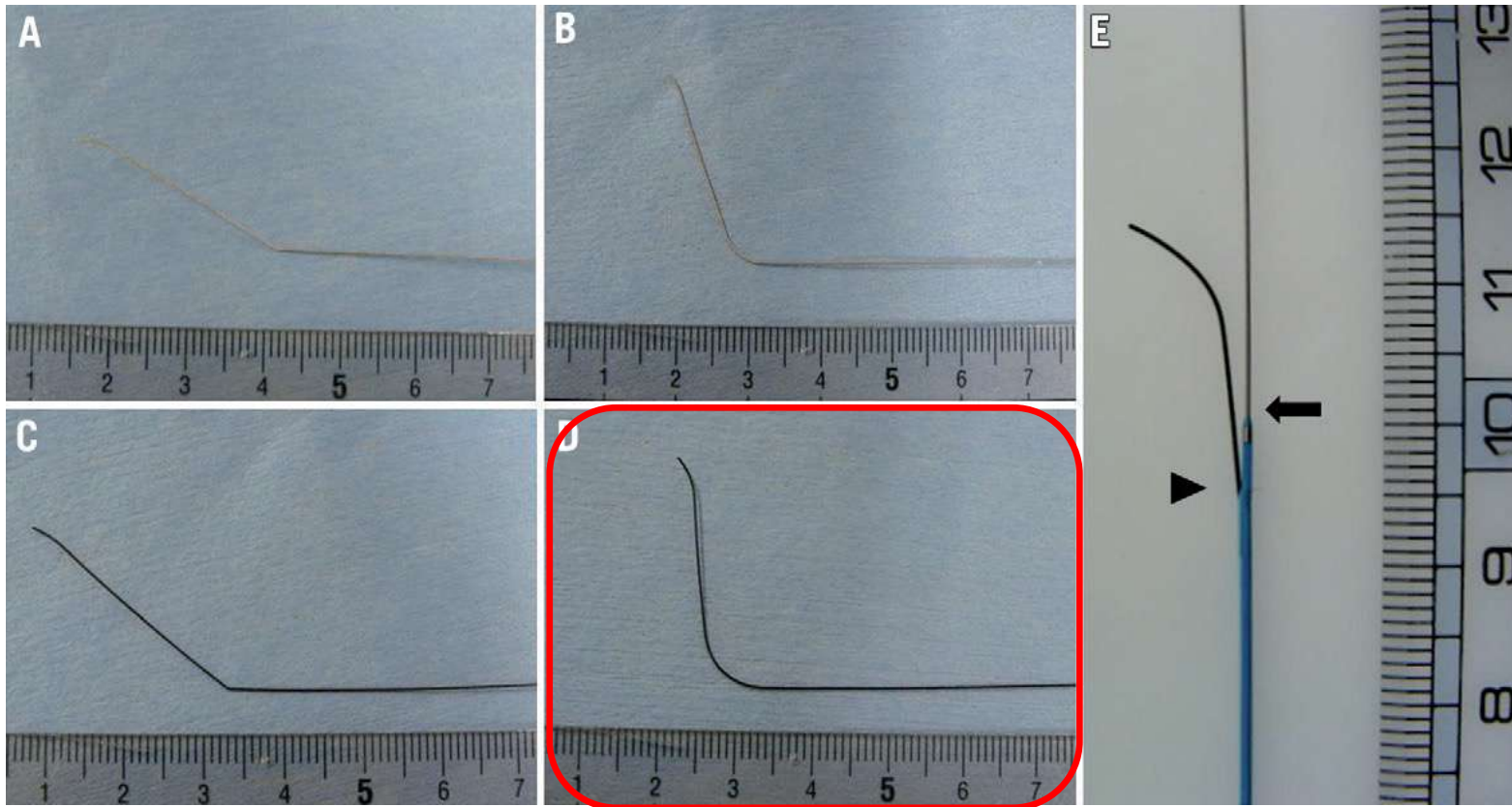


# Microcatheter-facilitated reverse wire technique for side branch wiring in bifurcated vessels: an *in vitro* evaluation

Shin Watanabe<sup>1</sup>, MD; Naritatsu Saito<sup>1\*</sup>, MD; Bingyuan Bao<sup>1</sup>, MD; Akihiro Tokushige<sup>2</sup>, MD; Hiroki Watanabe<sup>1</sup>, MD; Erika Yamamoto<sup>1</sup>, MD; Yoshiaki Kawase<sup>3</sup>, MD; Takeshi Kimura<sup>1</sup>, MD

*lequel et quelle préformation ?*

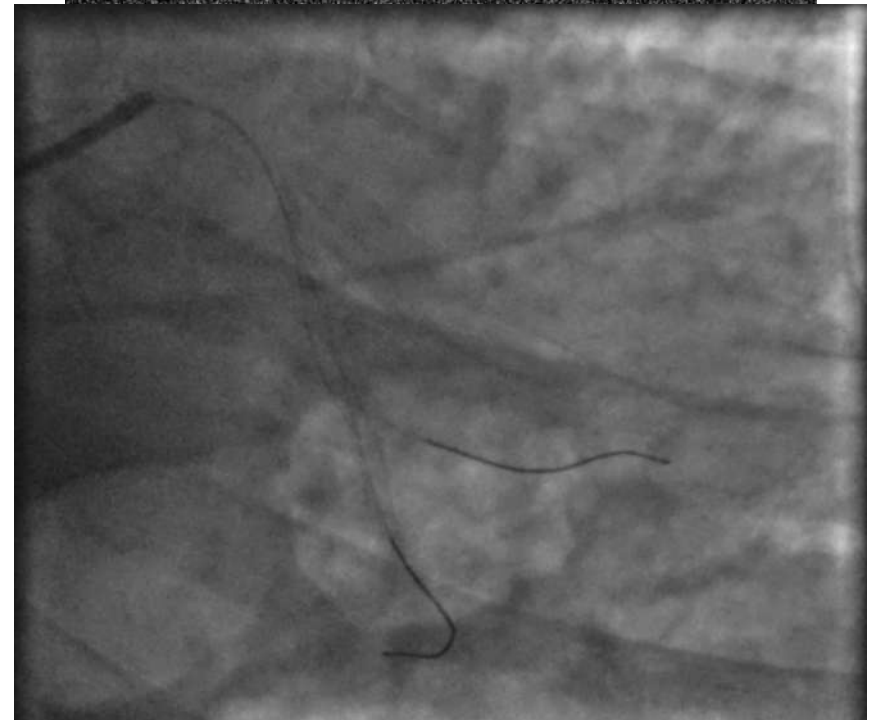
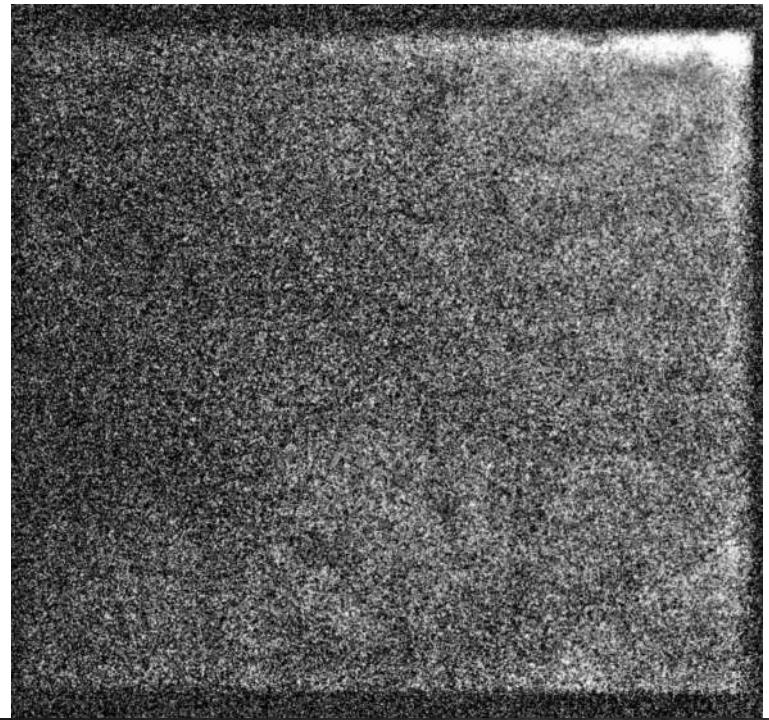
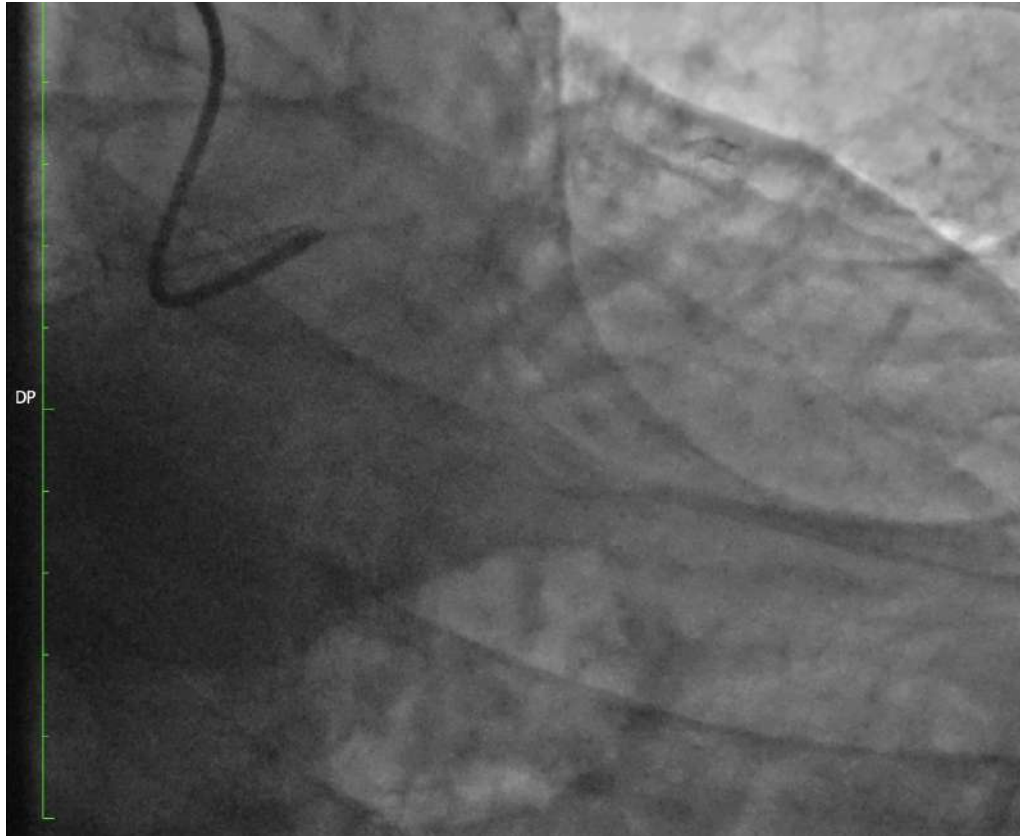




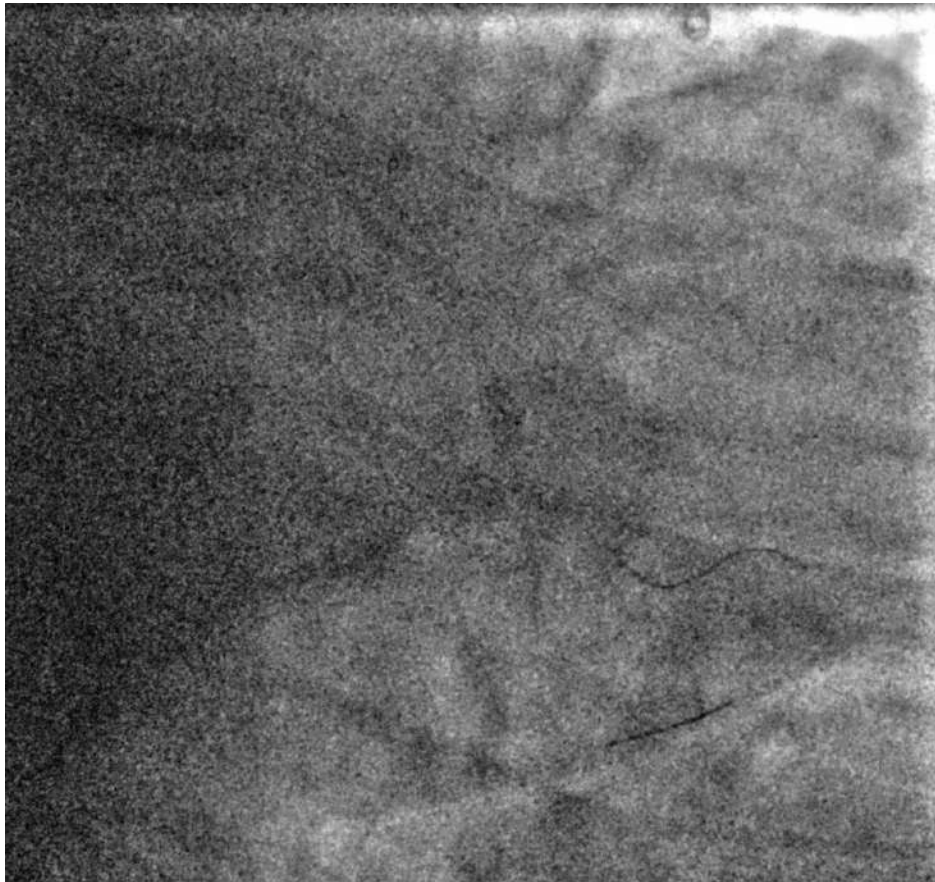
*A) SION blue avec angle à 3 cm du tip. B) SION blue avec angulation arrondie*

*C) Fielder FC avec angle à 3 cm du tip D) Fielder FC avec angulation arrondie*

Le plus efficace : guide polymérique avec coating hydrophile  
type Fielder FC - ***Sion Black***



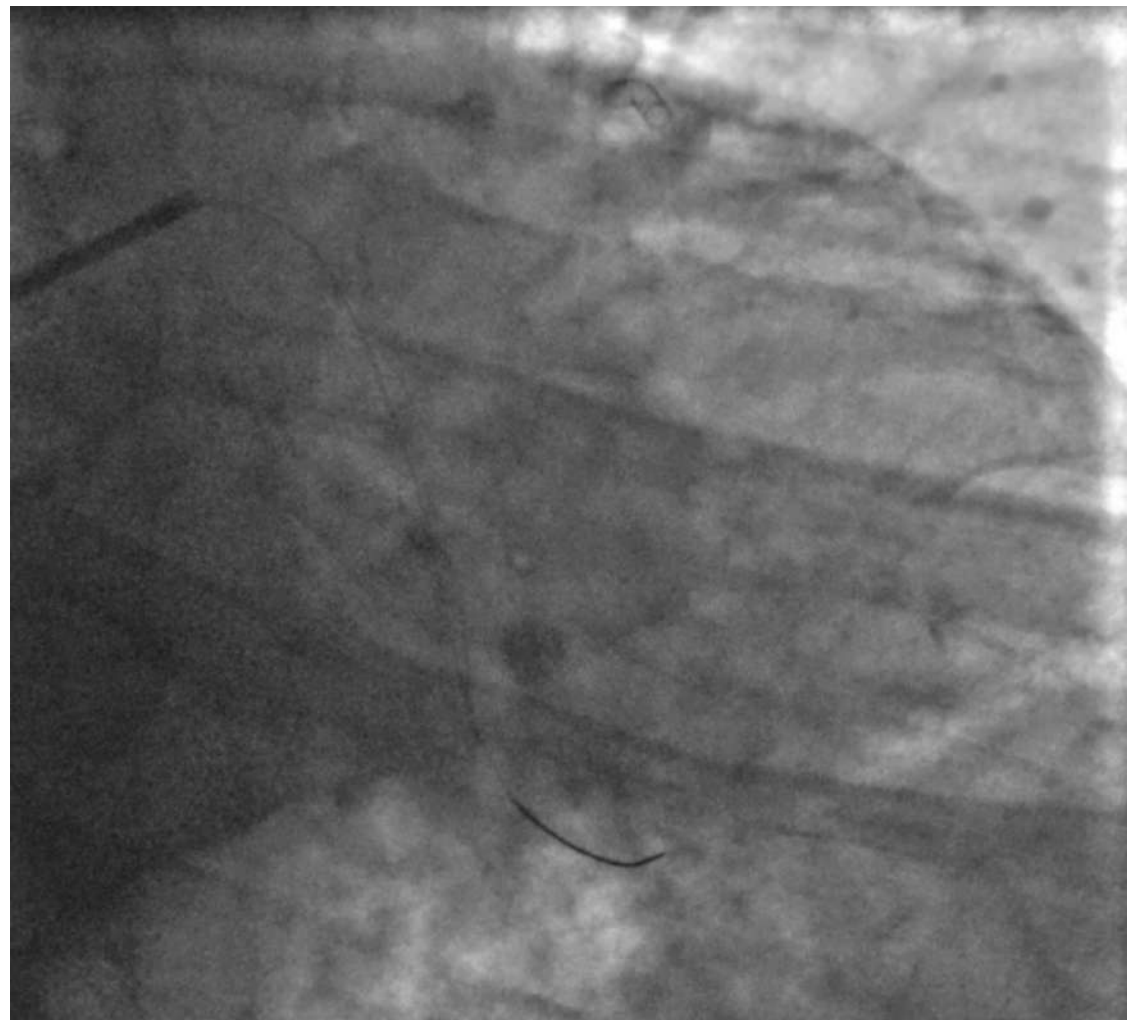
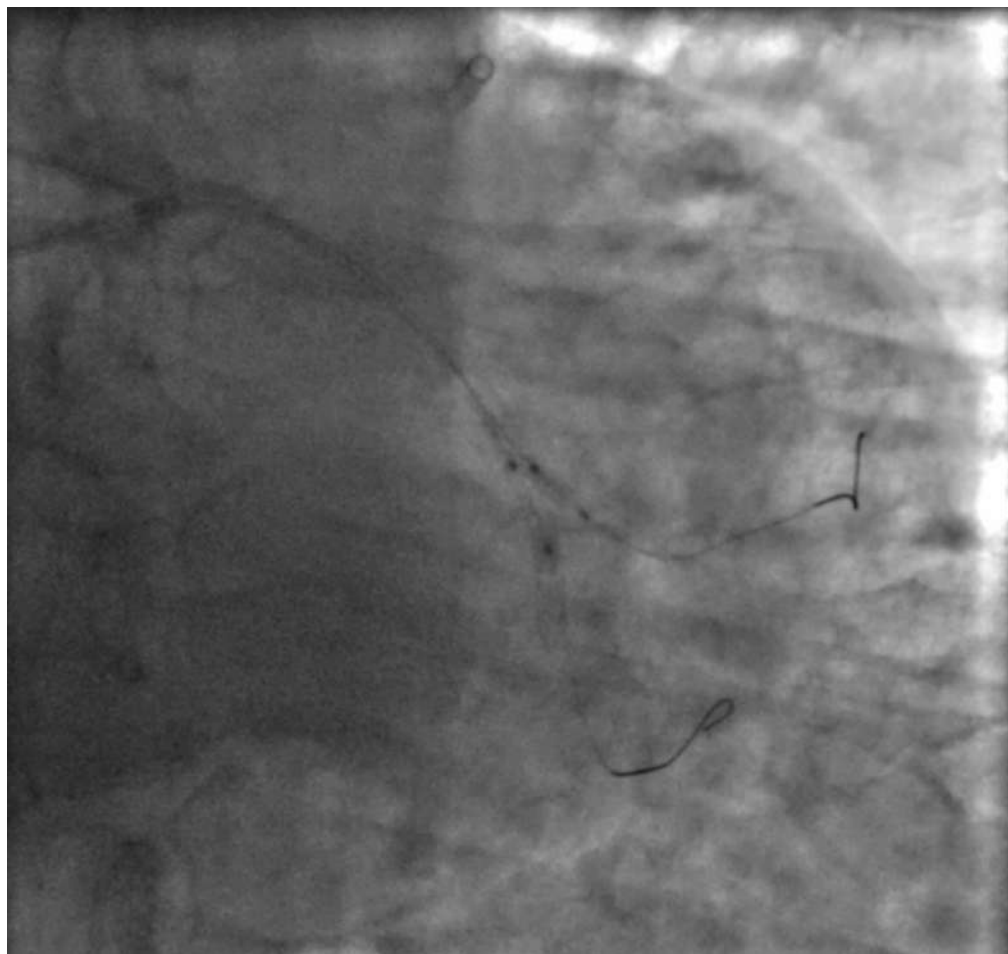
**1) POT +++**



**2) Refranchir au guide ...  
lequel et quelle préformation ?**

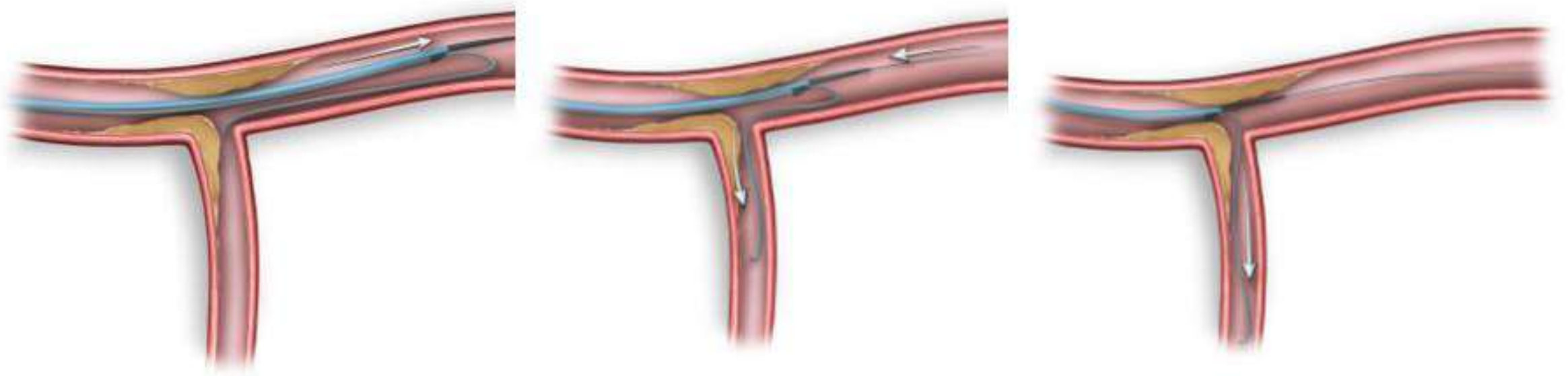
**2bis) utiliser un micocathéter double lumière**



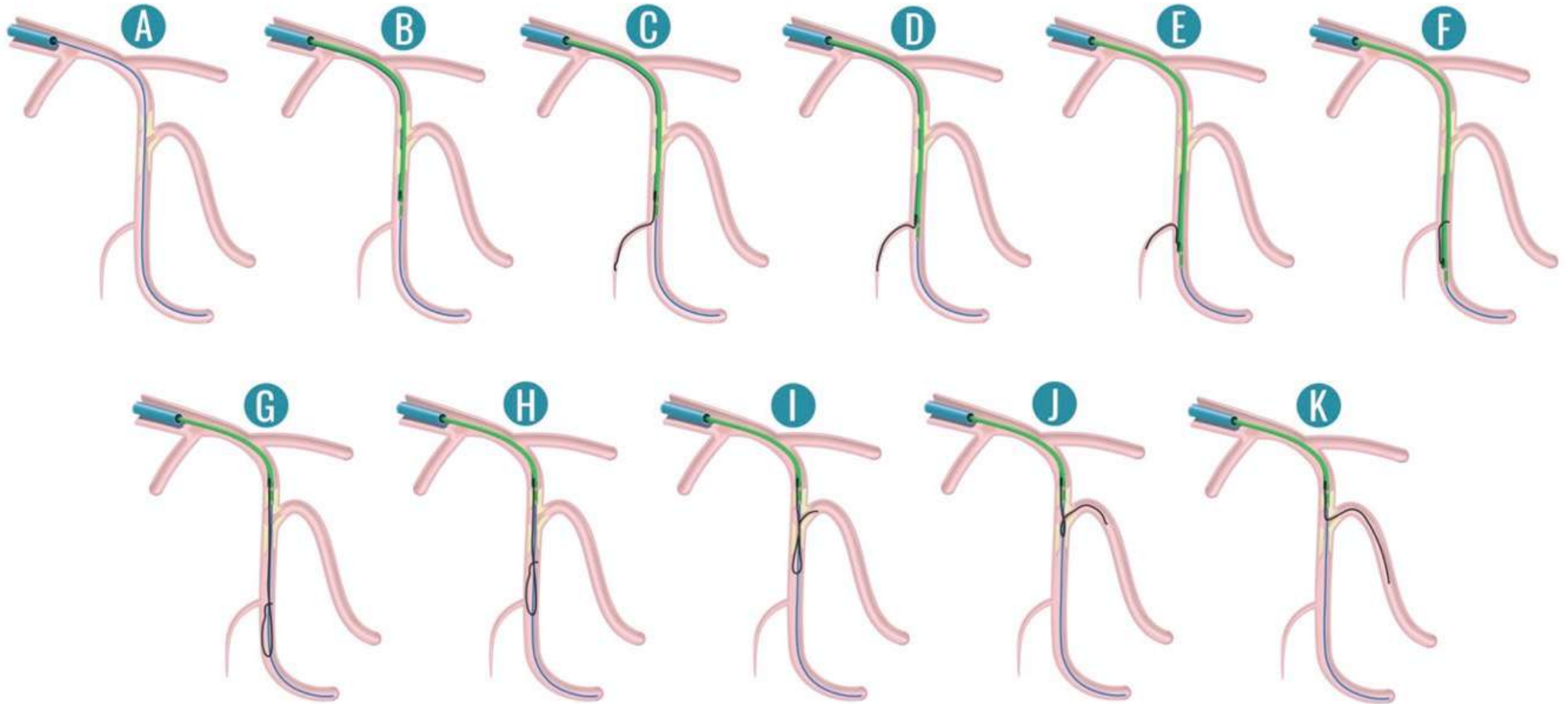


## Perte de branche fille ... CAT

### *3) Reverse wire avec microcathéter double lumière*



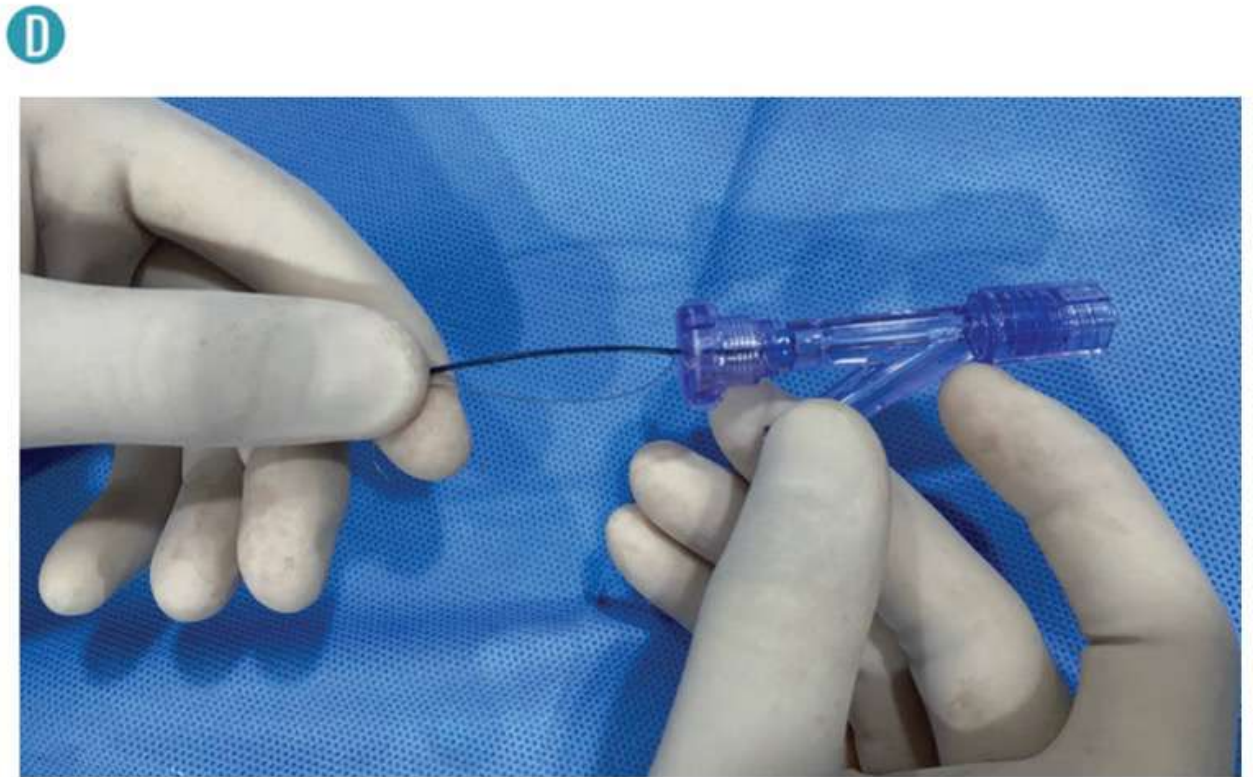
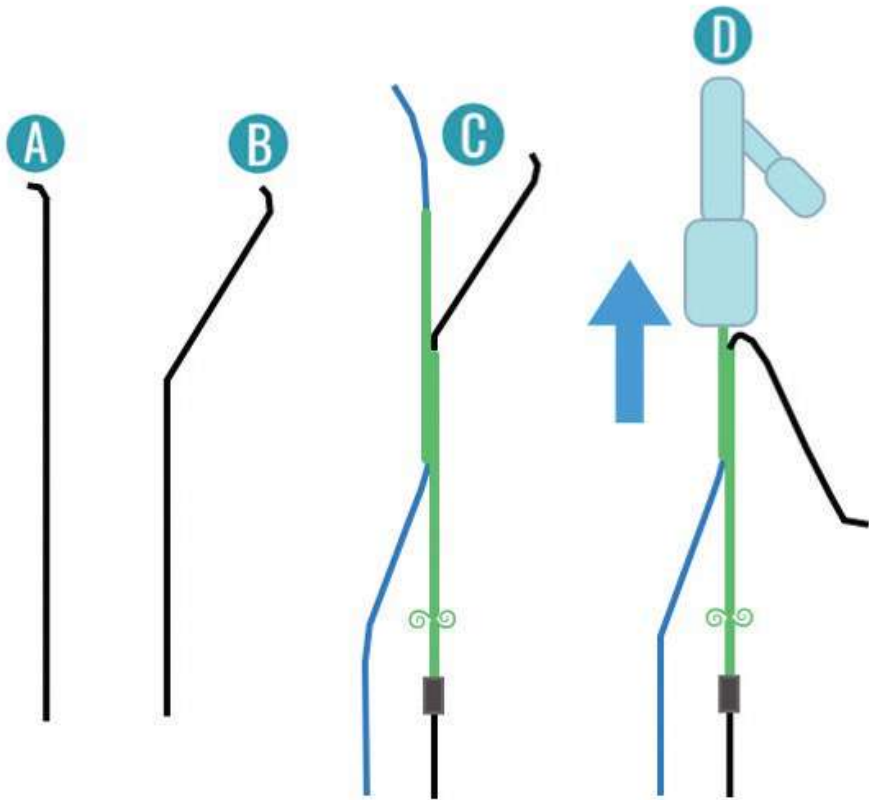
### ***3) Reverse wire avec microcathéter double lumière: utilisation d'une collatérale***

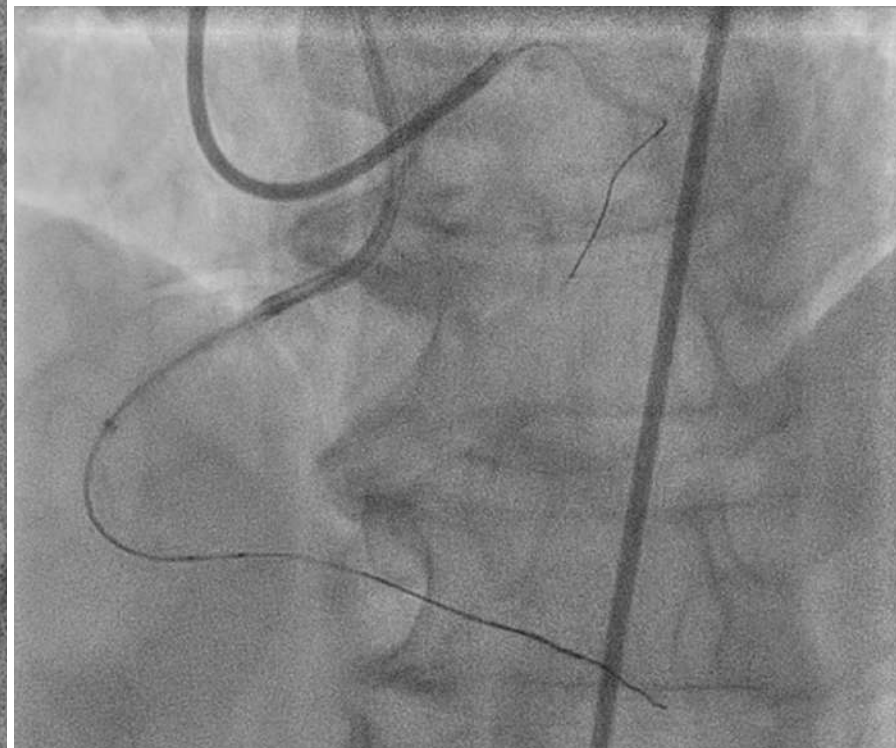
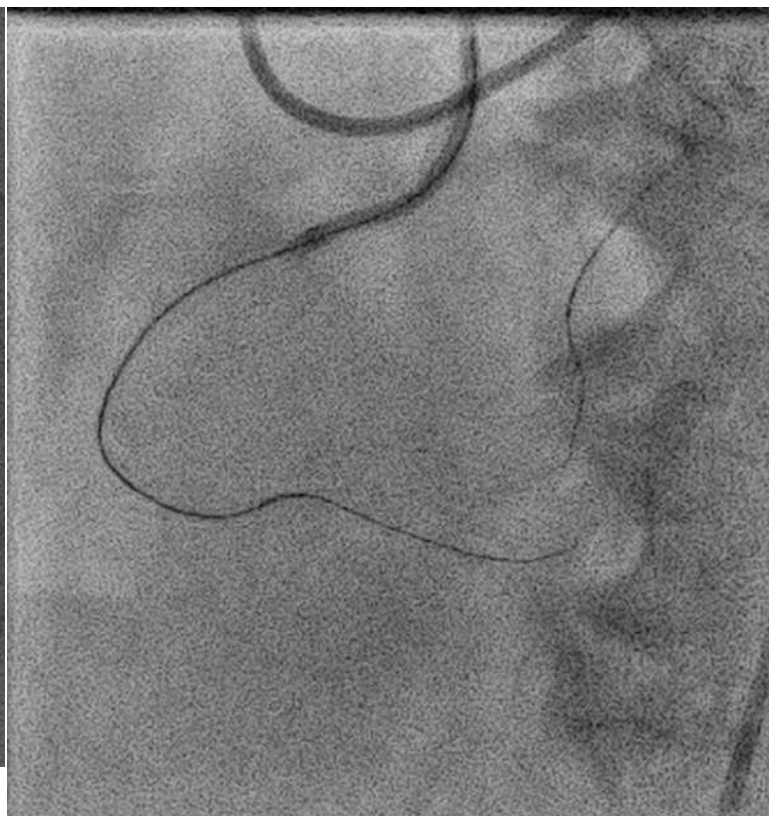
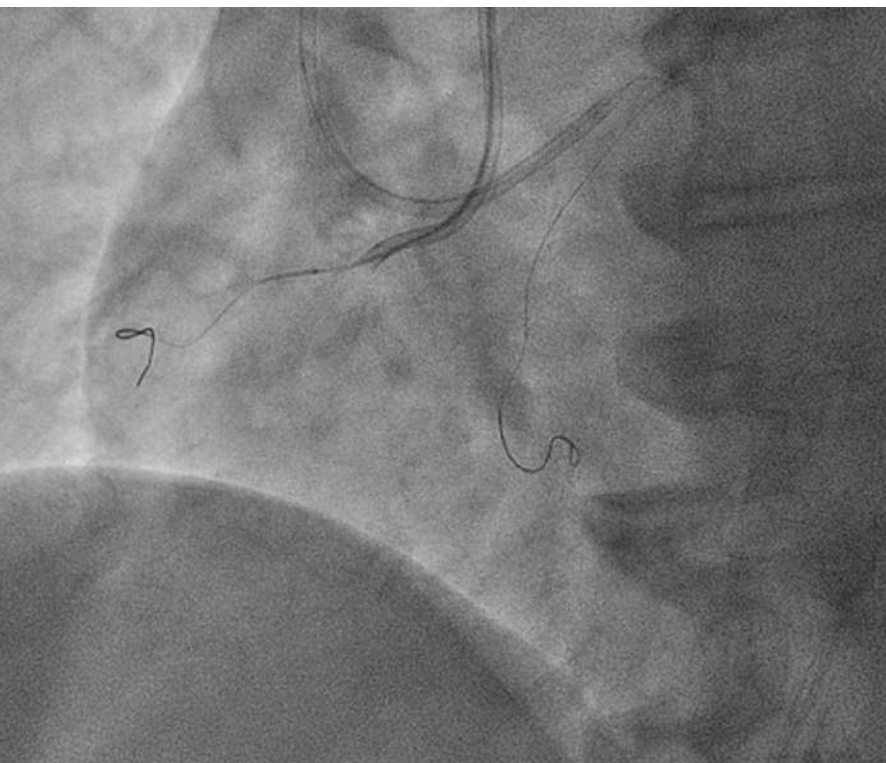


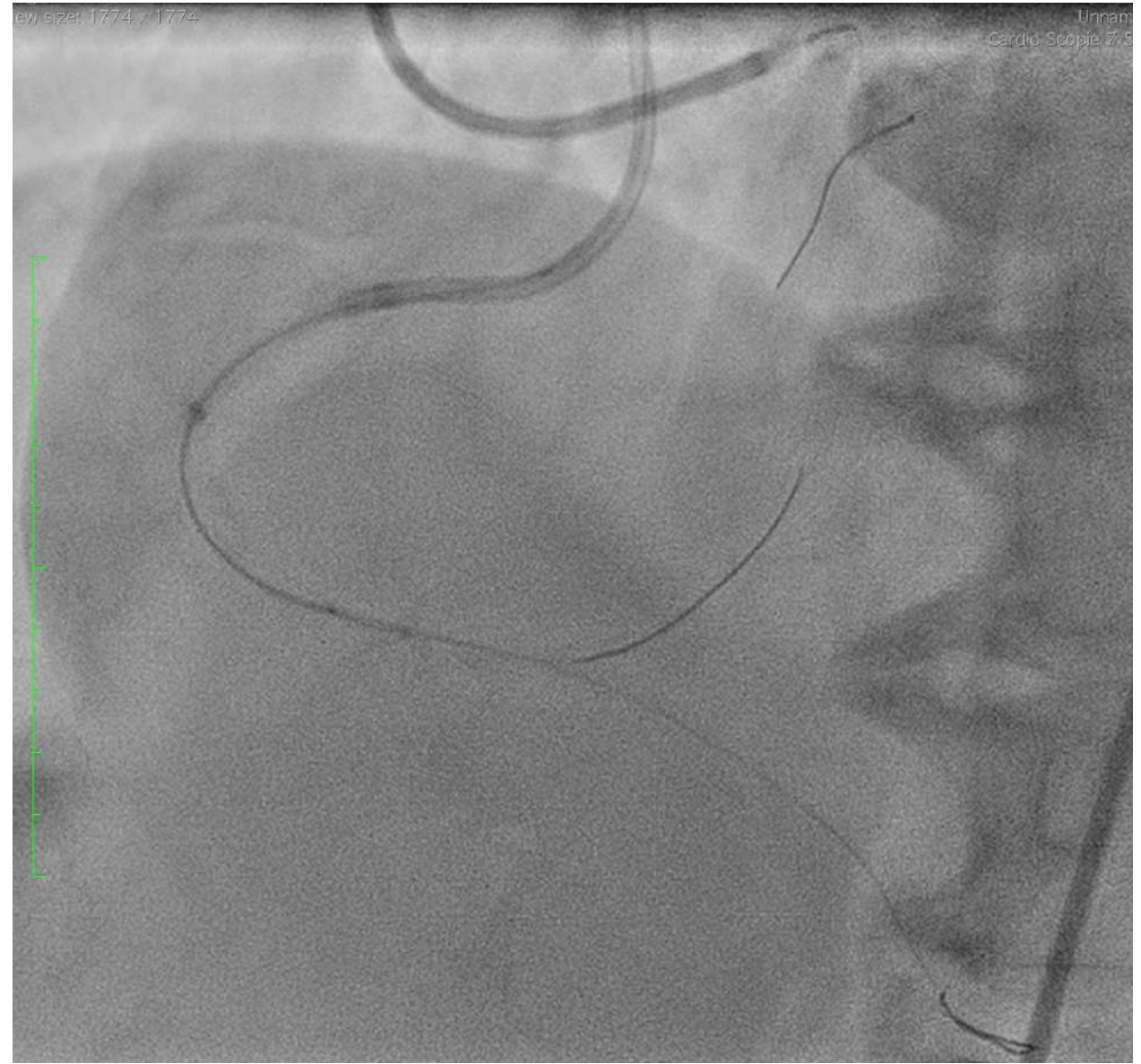


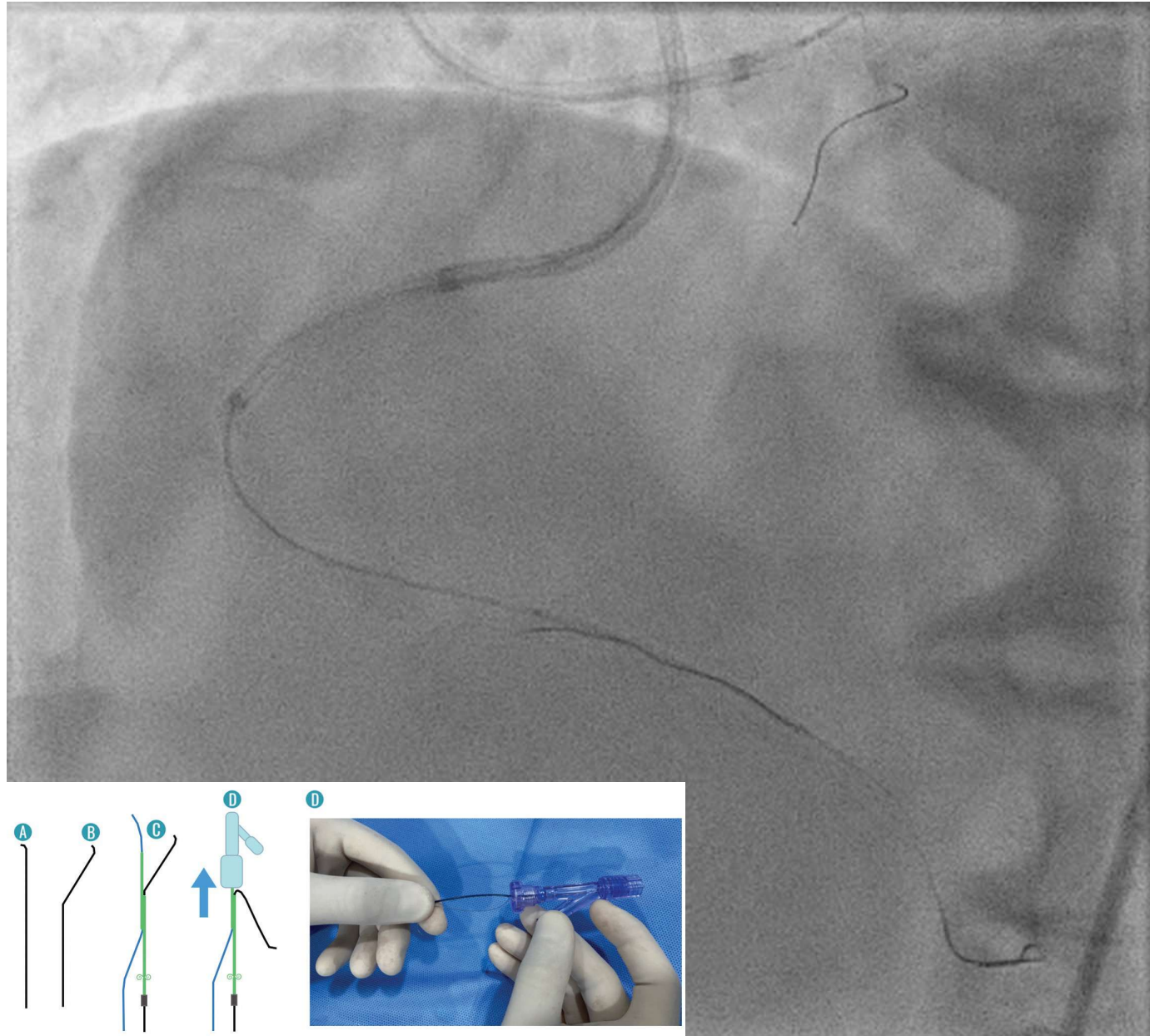


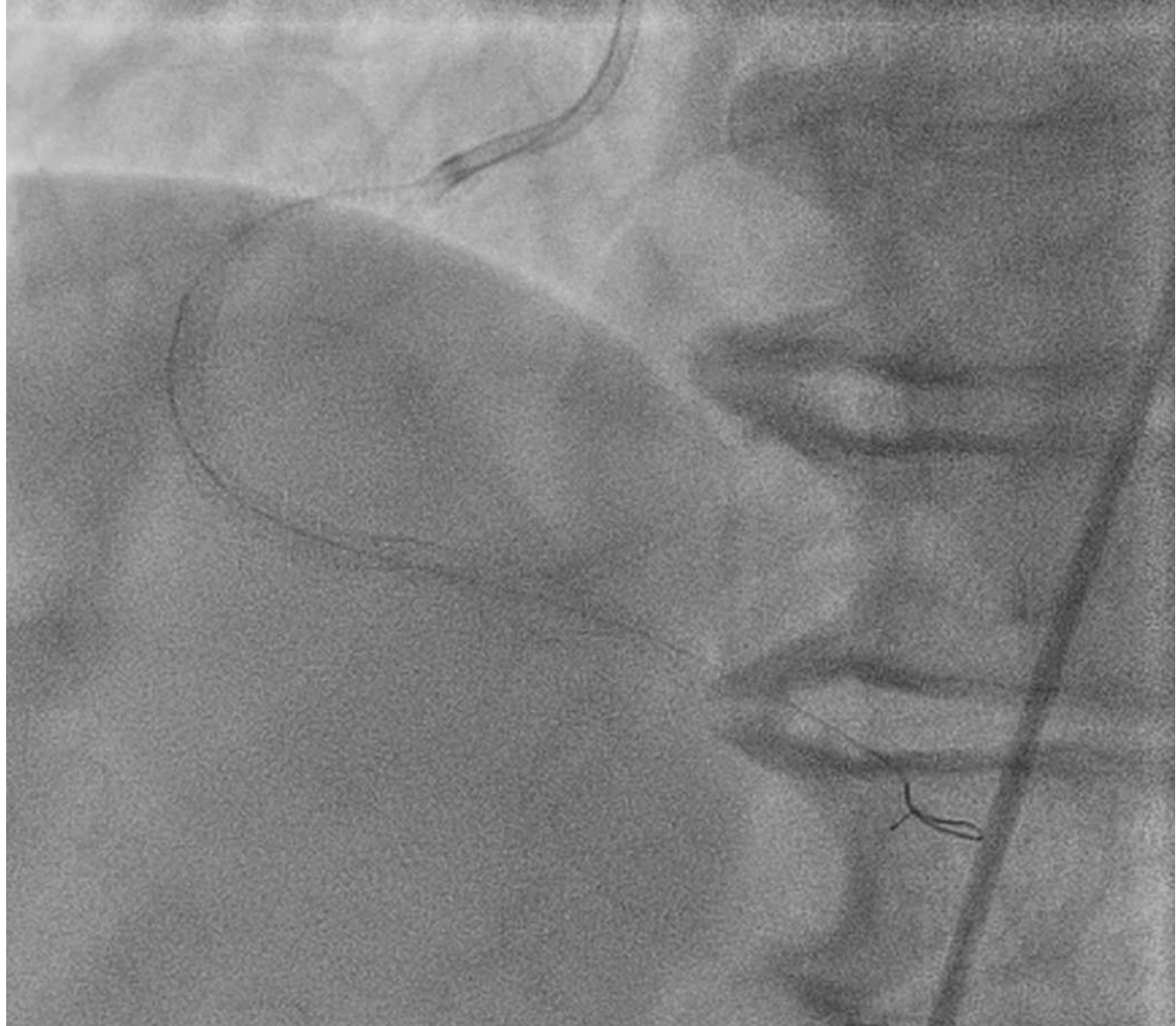
### ***3) Reverse wire avec microcathéter double lumière: Préformation en angle en utilisant le port latéral***





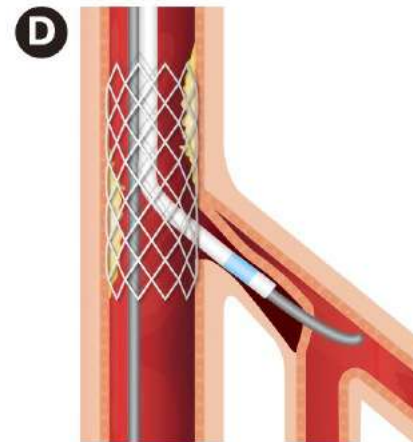
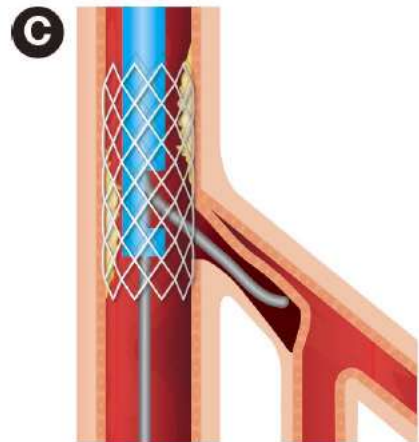
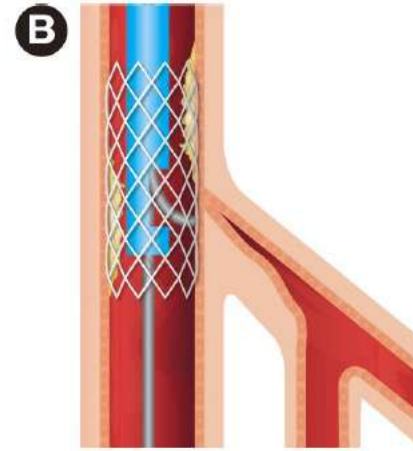
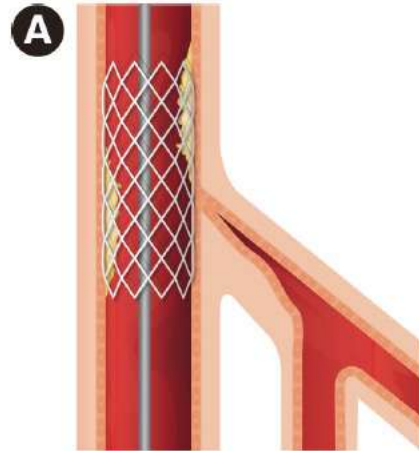






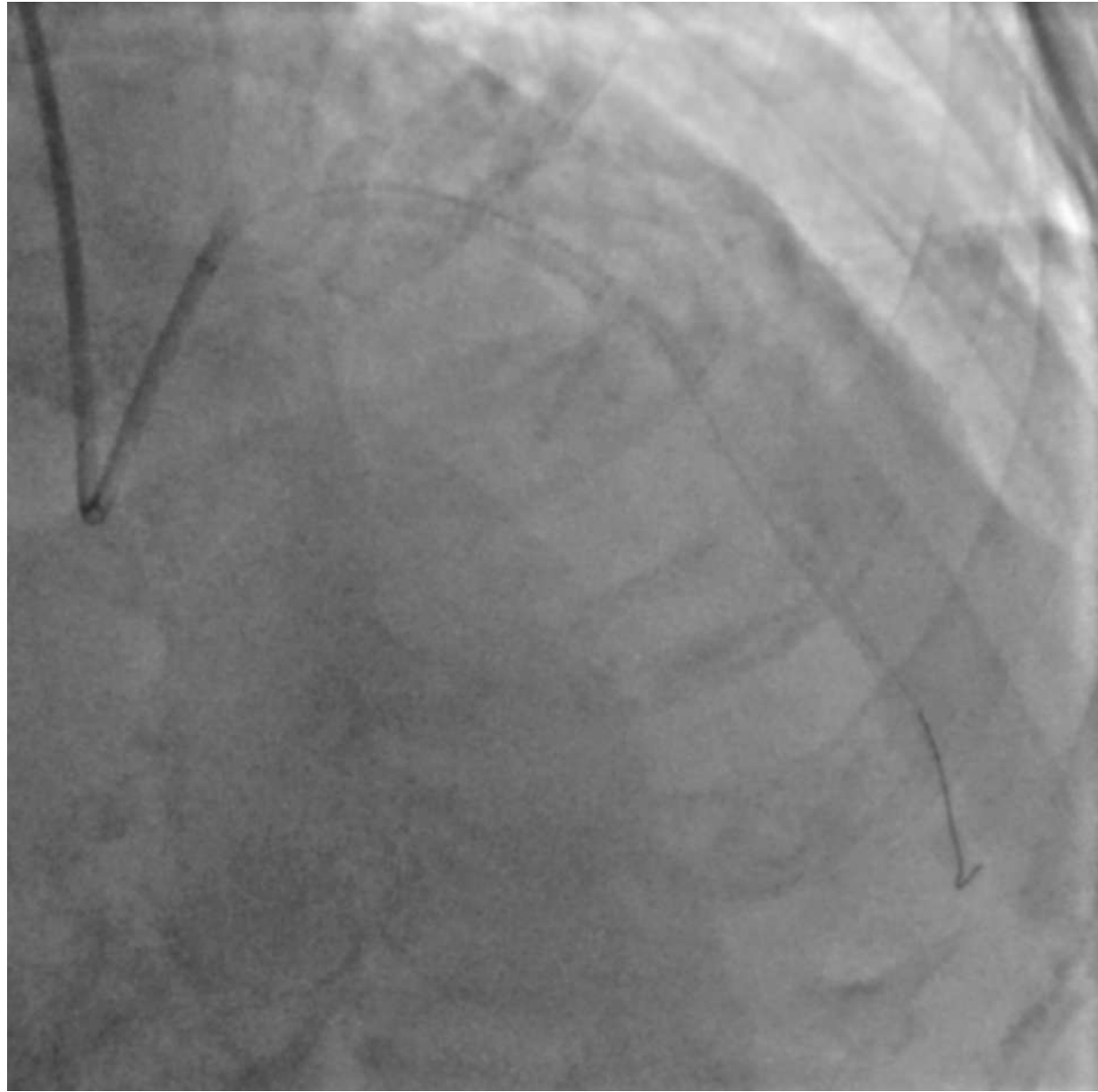
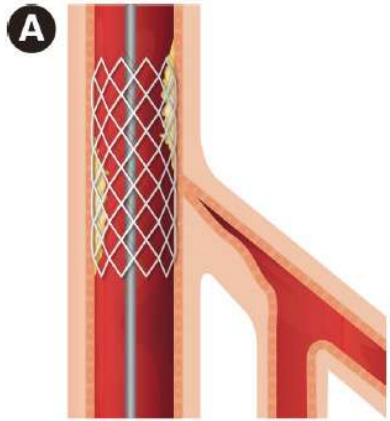
## 4) *Dissection réentrée STAR*

Subintimal Tracking and Re-entry Technique

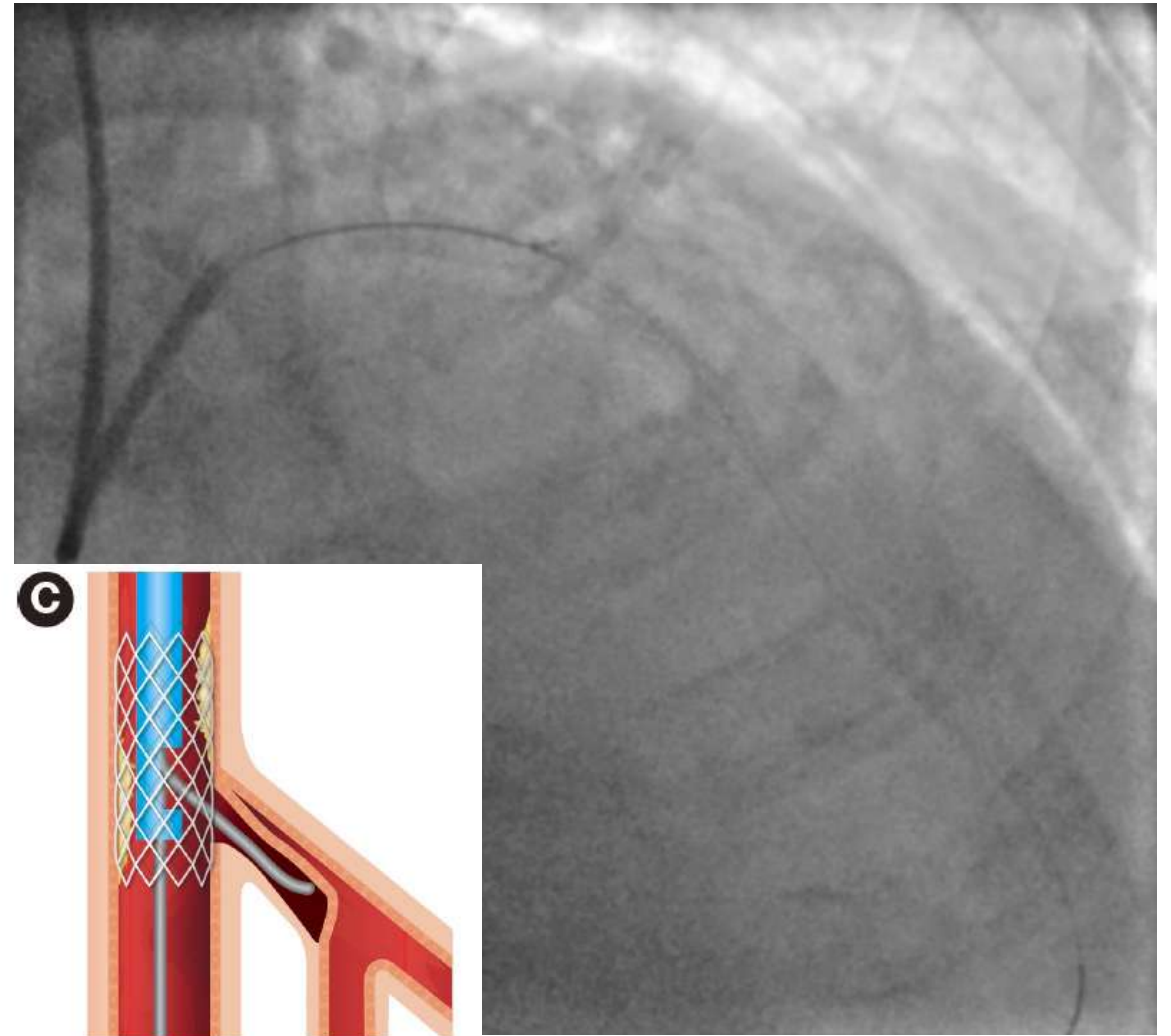
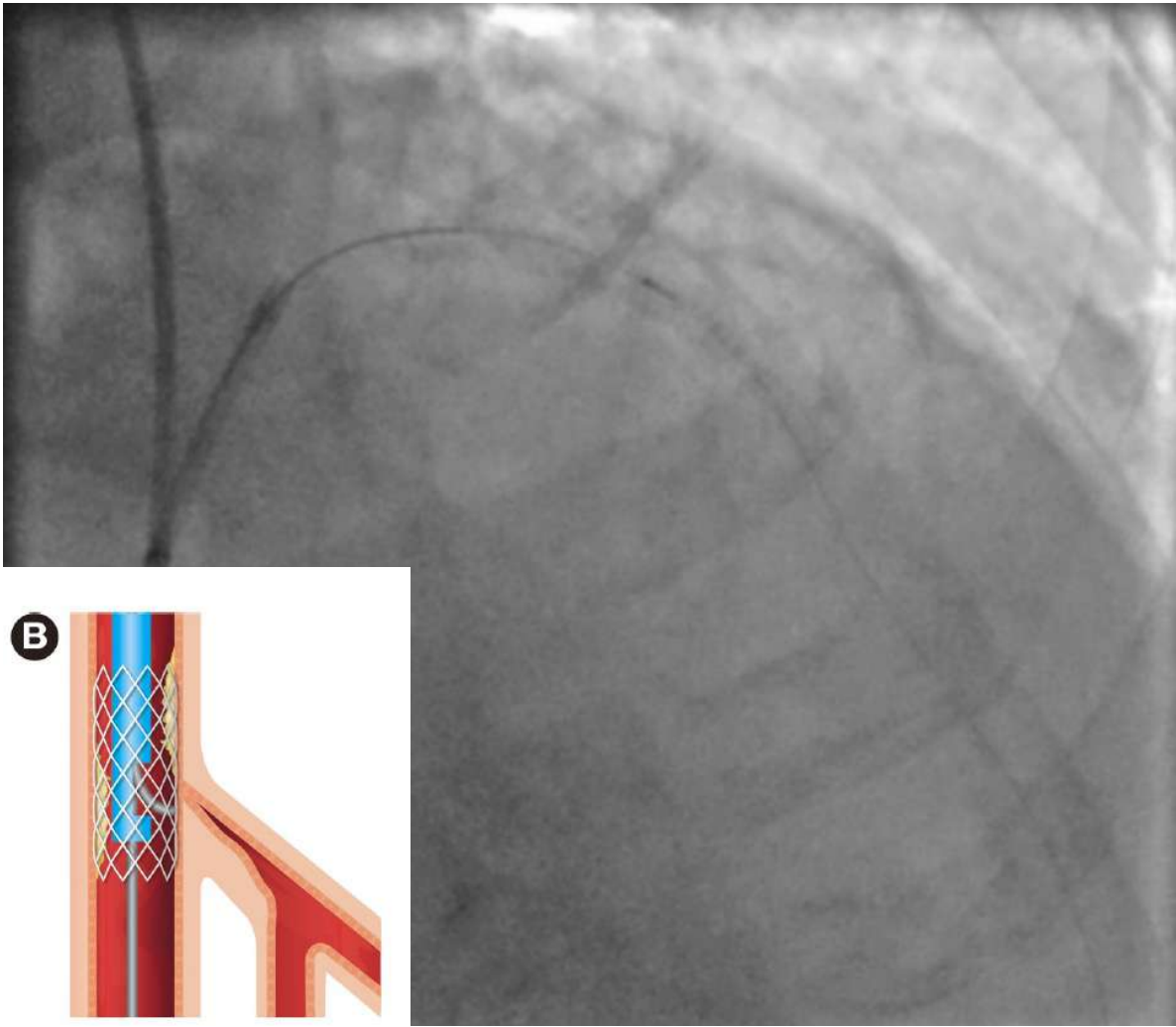


*GAIA 3*  
*Gladius*  
*Miracle 6*

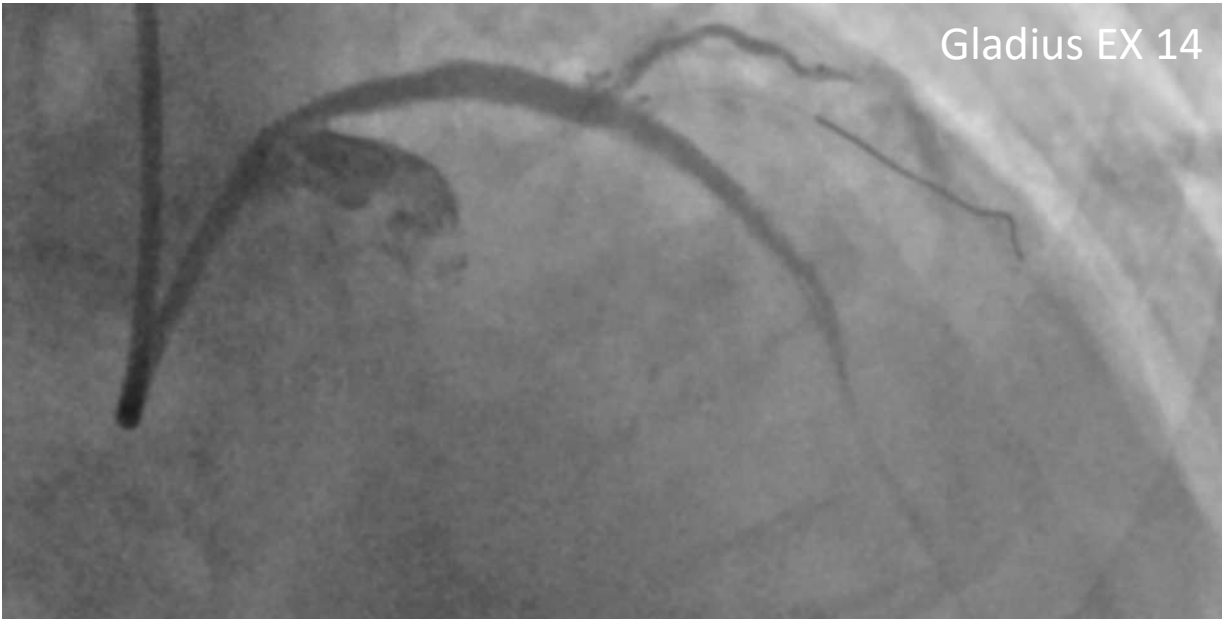




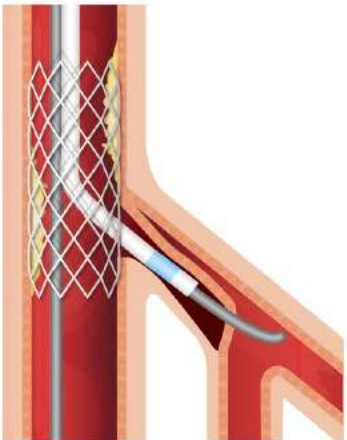




Gladius EX 14

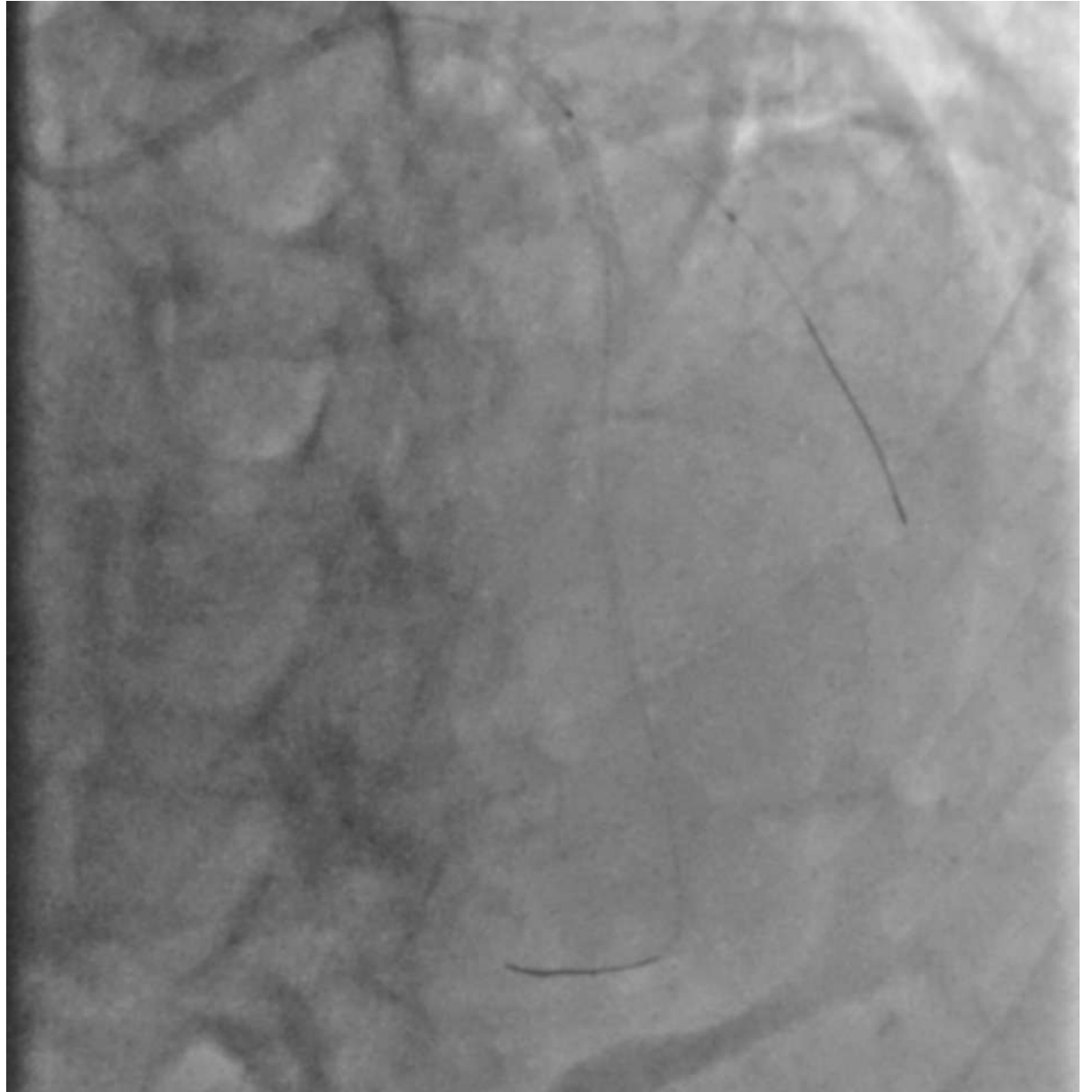


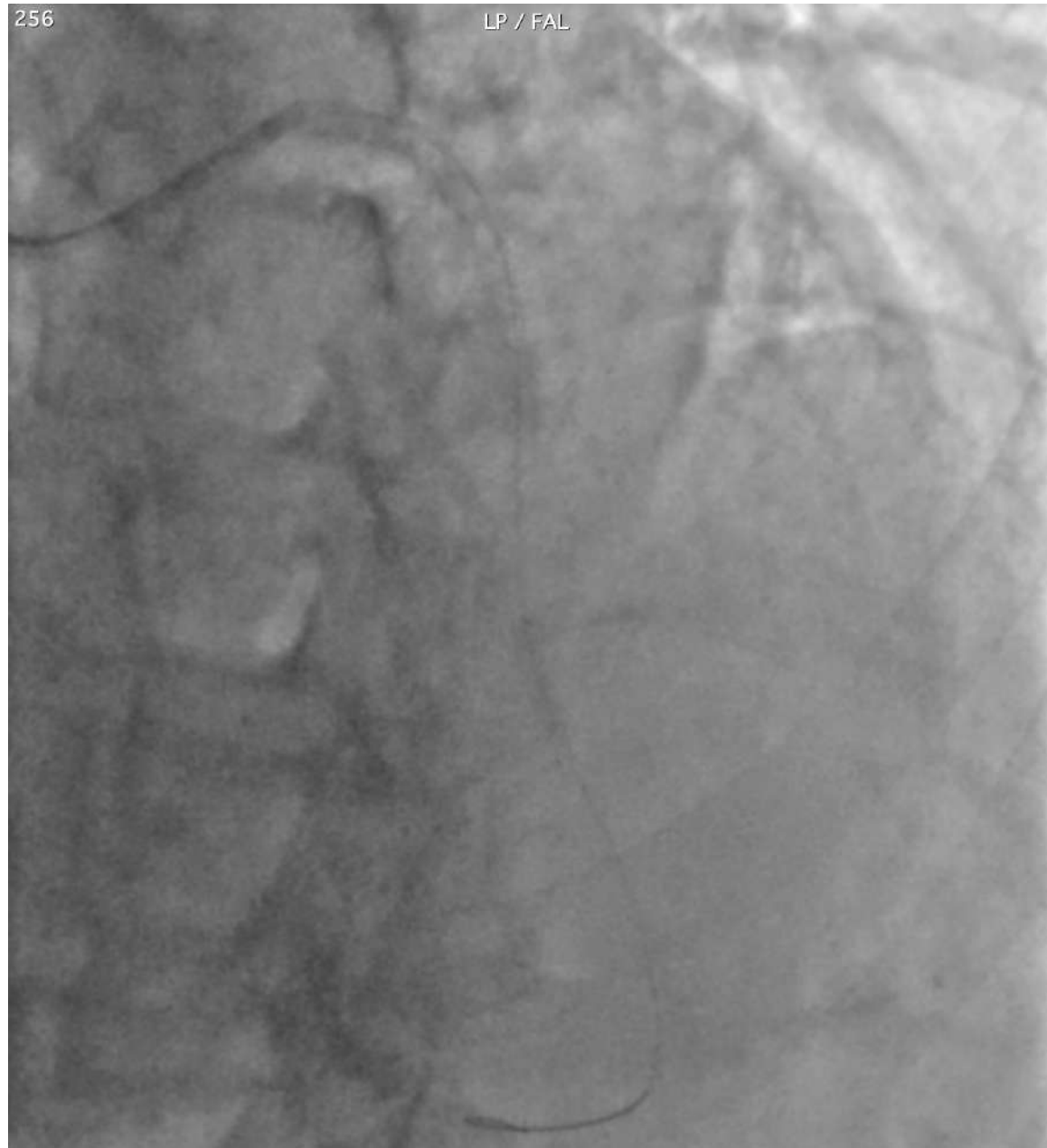
D



Gladius EX 14

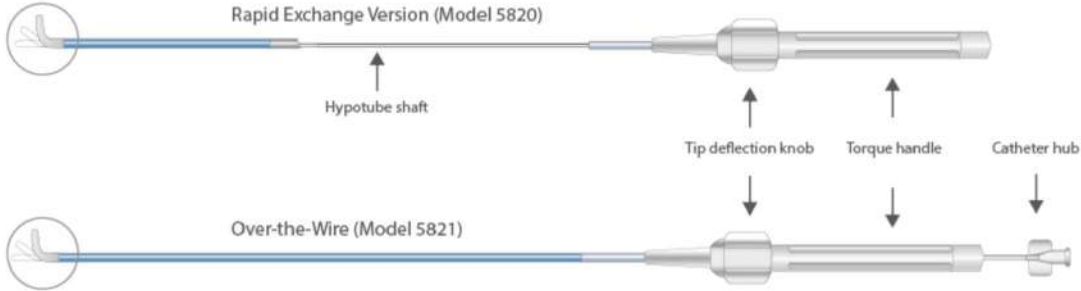
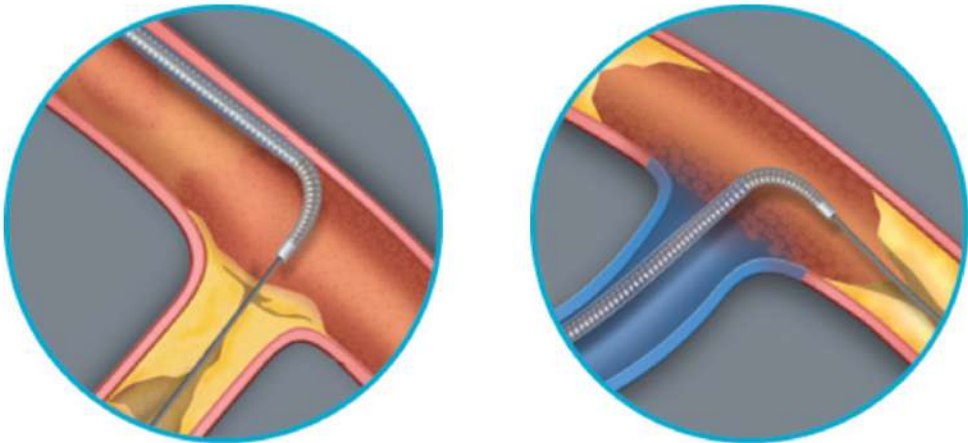




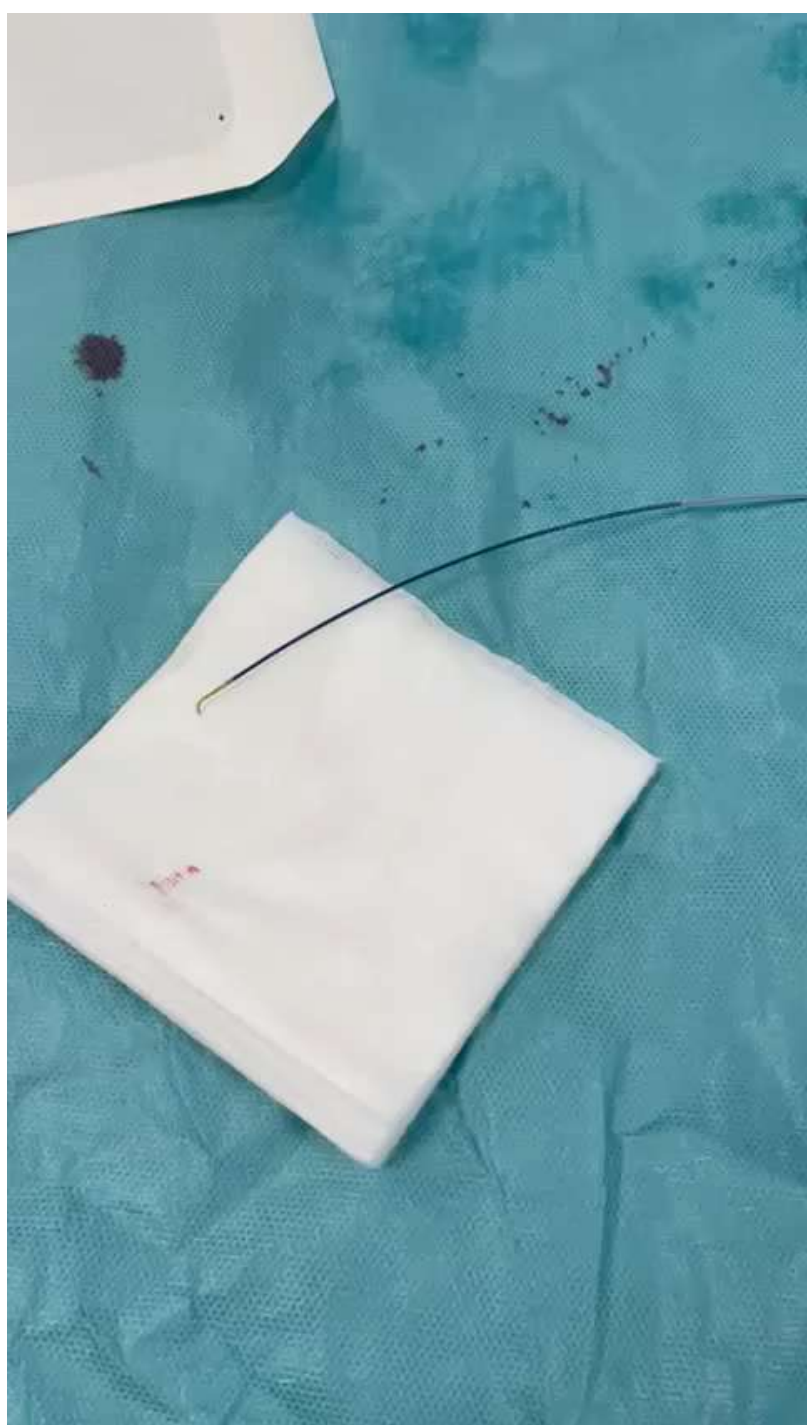
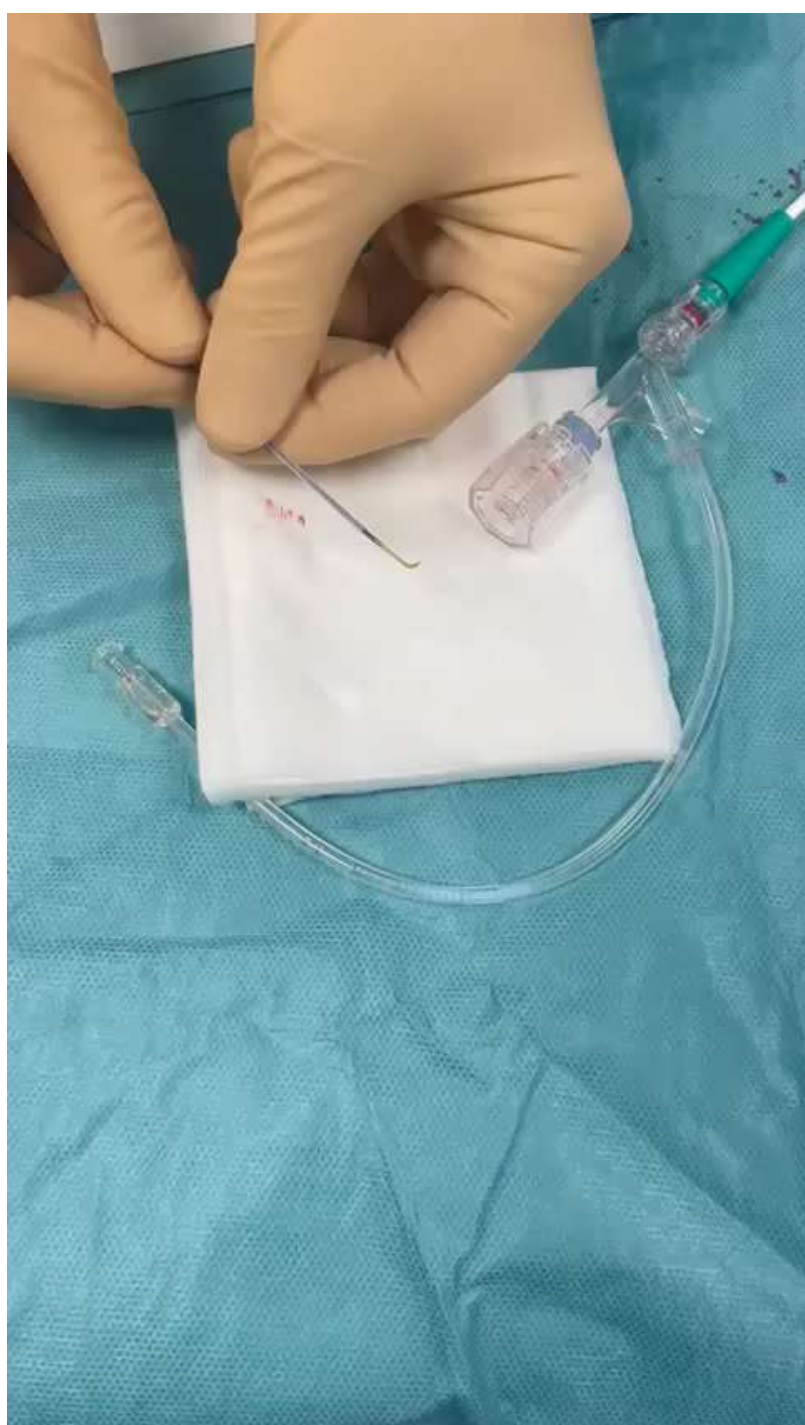


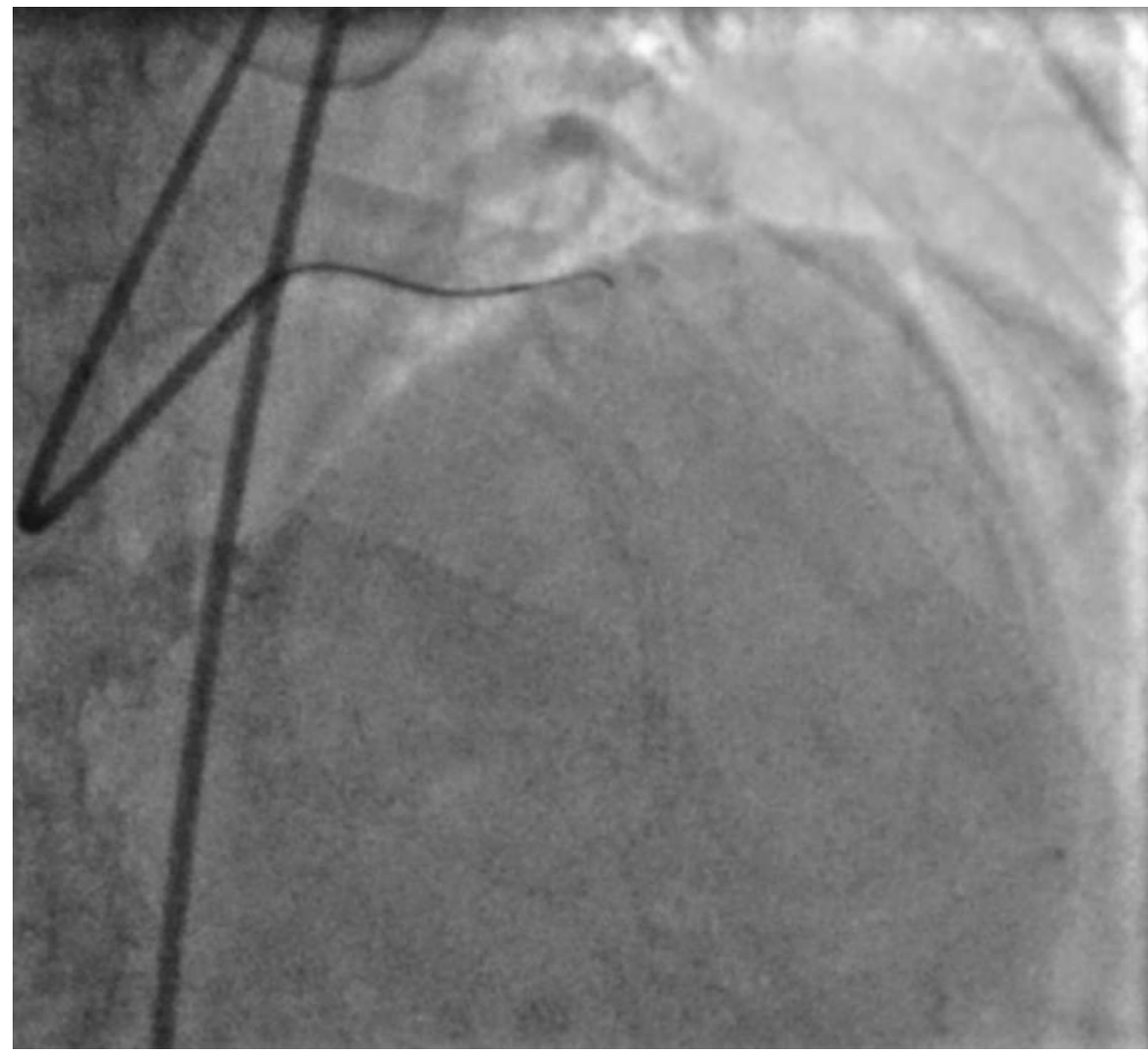
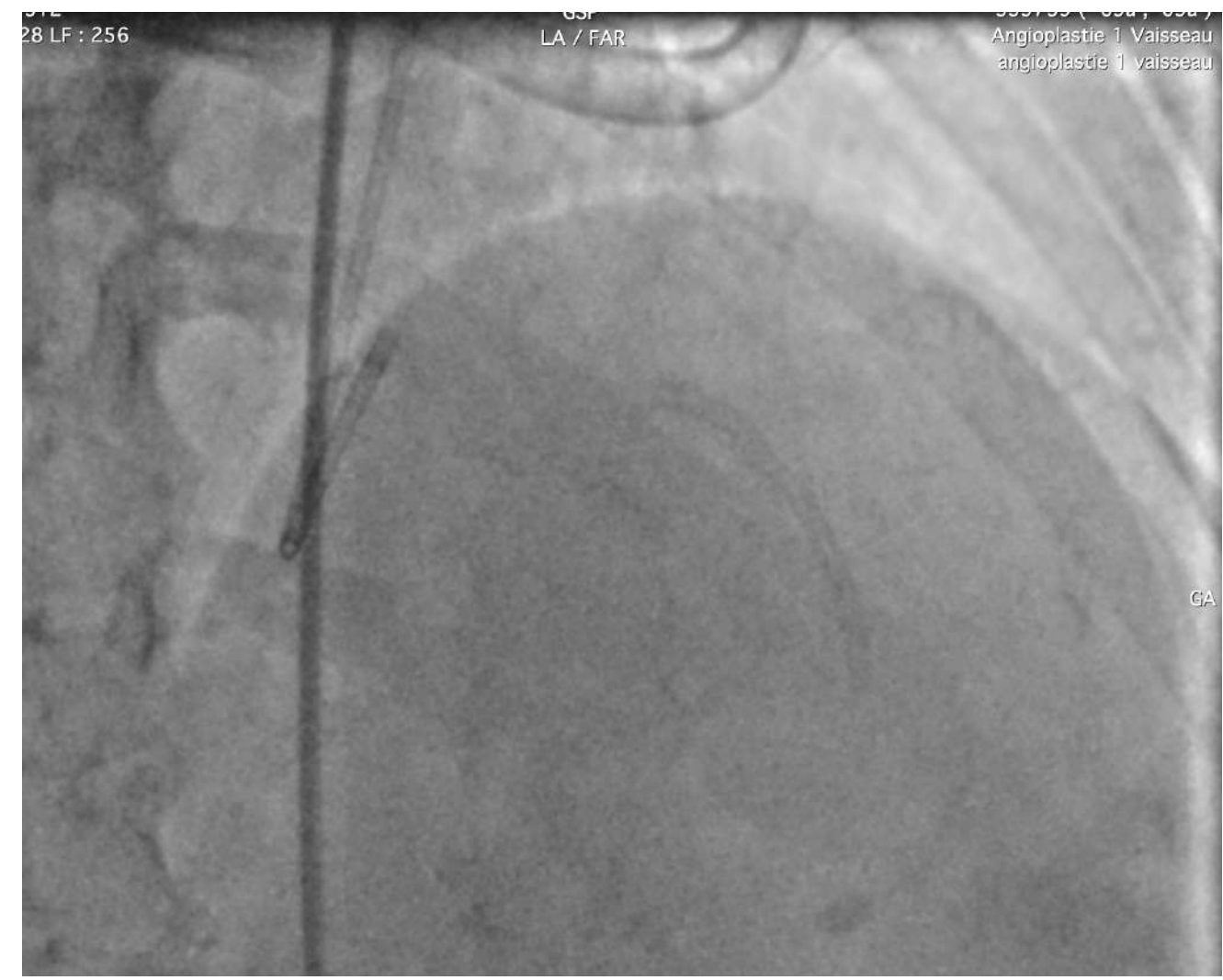
# Perte de branche fille ... CAT

## 5) microcathéter angulé



Venture® 0.014"









# CONCLUSION

## Perte de branche fille

- POT +++
- Microcathéter double lumière
- Utiliser Guide polymérique coating hydrophile préformation 3 cm angulation arrondie
- Reverse wire ( en utilisant les collatérales ou insertion 180° dans la valve )
- STAR
- Microcathéters angulés

