



1·2·3 FÉVRIER 2023

MARSEILLE·PALAIS DU PHARO



Gestions des complications coronaires

Stent desserti ...



M.Godin

Clinique
Saint-Hilaire 



1·2·3 FÉVRIER 2023

MARSEILLE·PALAIS DU PHARO

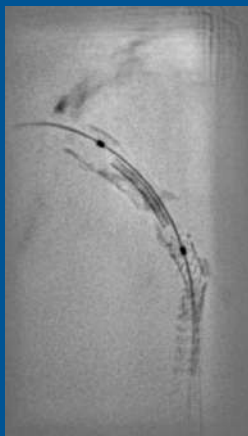


CAUCHEMOR
EN CUISINE



Stent desserti ...

M.Godin



Clinique
Saint-Hilaire



1-2-3 FÉVRIER 2023

MARSEILLE • PALAIS DU PHARO



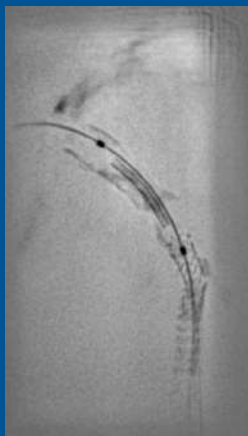
CAUCHEMOR
EN CUISINE

AU CATH LAB



Stent desserti ...

M. Godin



Clinique
Saint-Hilaire

DÉCLARATION DE LIENS D'INTÉRÊT AVEC LA PRÉSENTATION

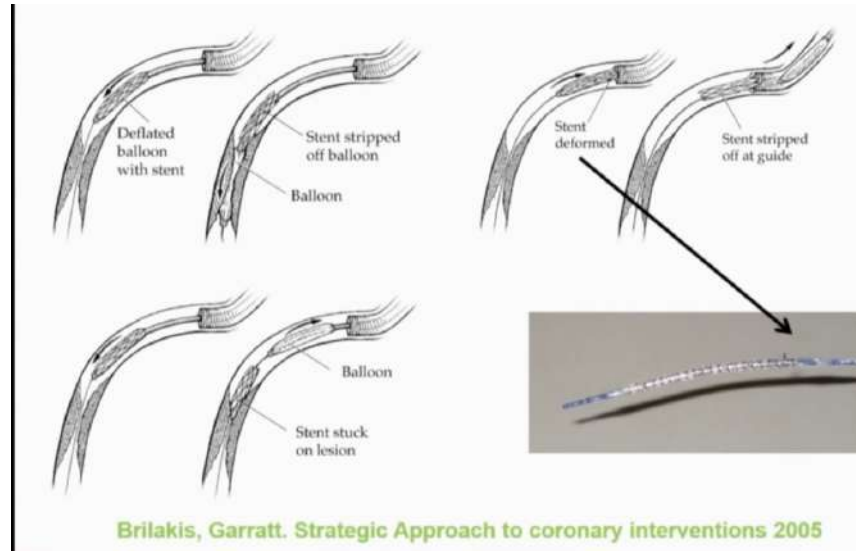
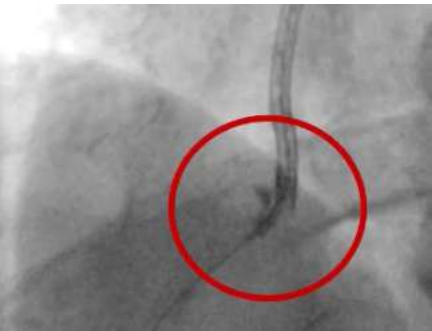
Medtronic, Abbott, Boston, Terumo, Microport, Bbraun, Biotronik, Cordis, SMT, Biosensor, Alvimedical, Translumina, Hexacath....

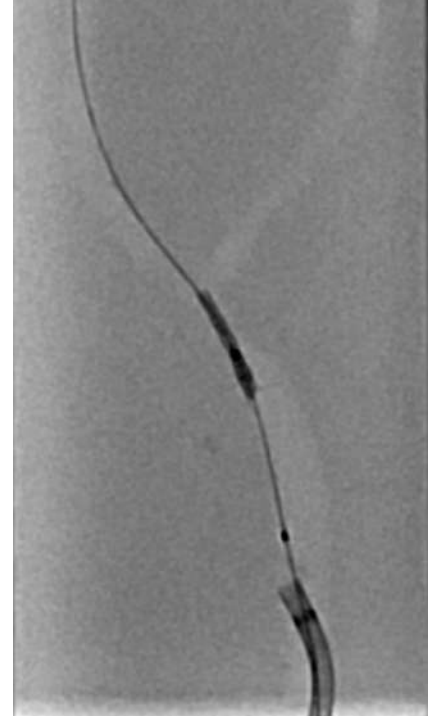
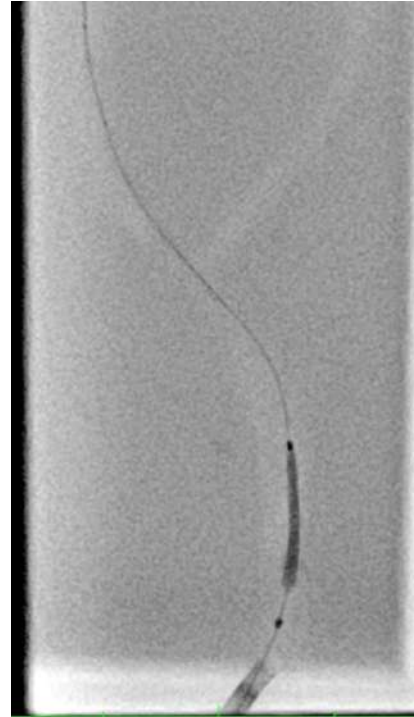
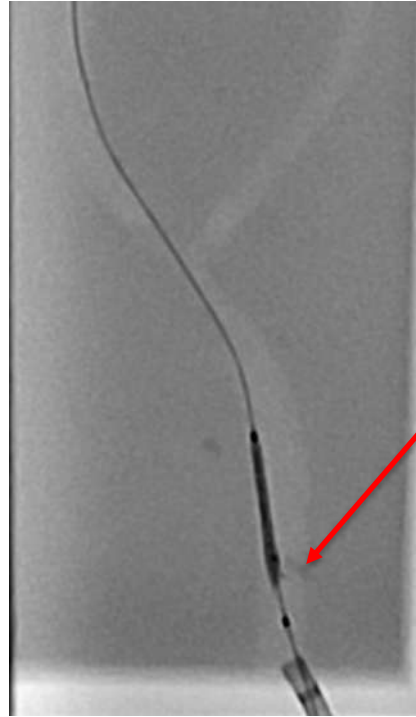
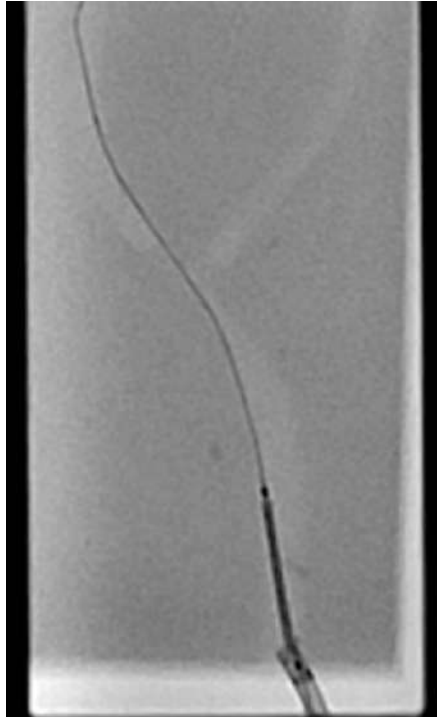
Désintérêt de ces labos après avoir desserti presque tous les stents du marché....



Eviter de dessertir

- Préparation lésion +++
- Attention retrait stent avec Guiding : coaxialiser ++





Questions et bons réflexes

- Localisation dessertissage
 - Au niveau vaisseau cible ?
 - En amont dans zone hostile ?
 - TC avec un stent sous dimensionné
 - Bifurcation complexe
 - Stent couvert desserti

Questions et bons réflexes

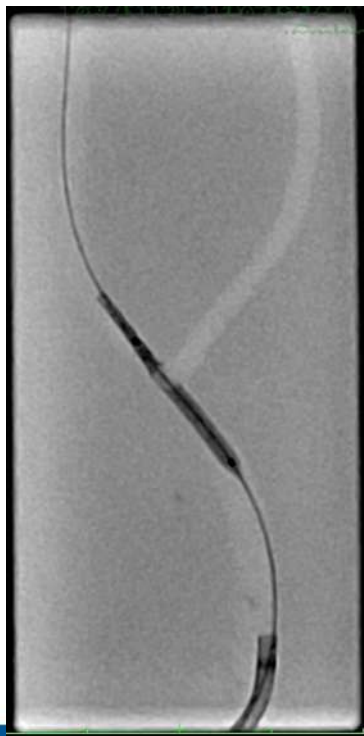
- Localisation dessertissage ?
- Stabilité hémodynamique? Environnement pharmaco ?

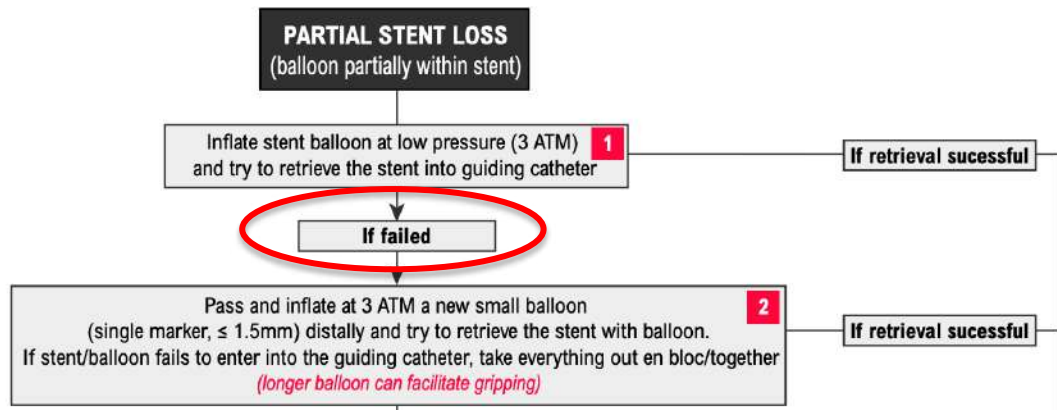
Questions et bons réflexes

- Localisation dessertissage ?
- Stabilité hémodynamique? Environnement pharmaco ?
- Stent partiellement ou totalement desserti ?
- Guide encore au milieu du stent ?
- Que faire ?
 - Retrait
 - Ne pas retirer et déployer en amont ou crush

PARTIAL STENT LOSS
(balloon partially within stent)

Inflate stent balloon at low pressure (3 ATM) **1**
and try to retrieve the stent into guiding catheter





PARTIAL STENT LOSS
(balloon partially within stent)

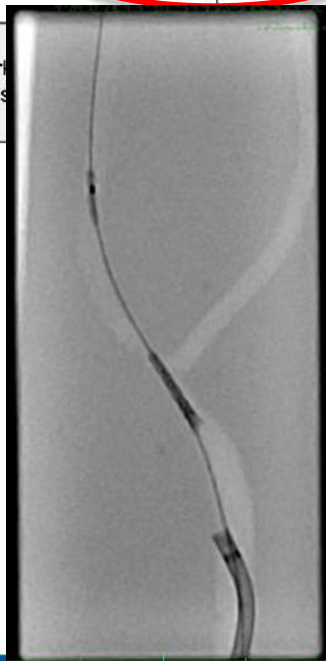
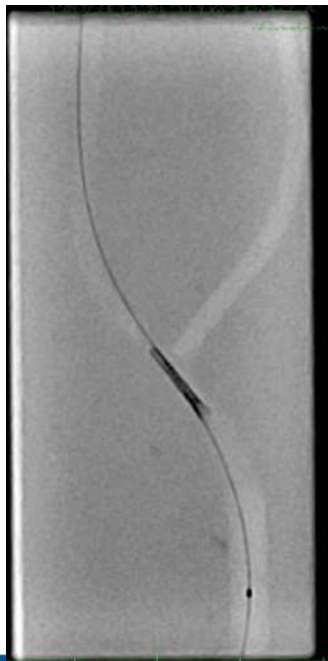
Inflate stent balloon at low pressure (3 ATM) **1**
and try to retrieve the stent into guiding catheter

If retrieval successful

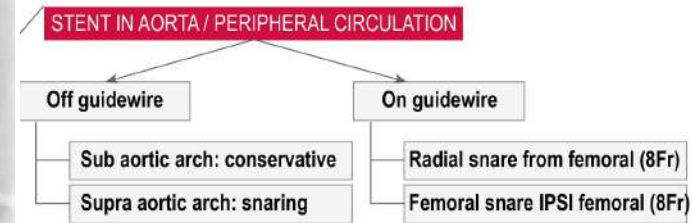
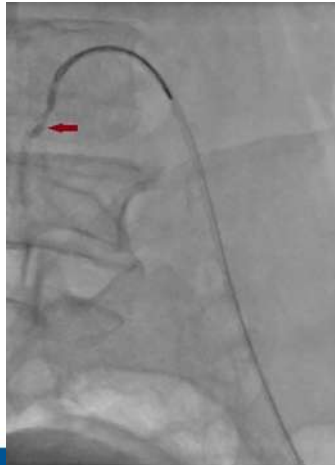
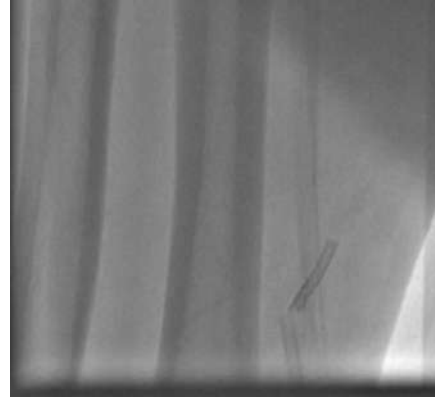
If failed

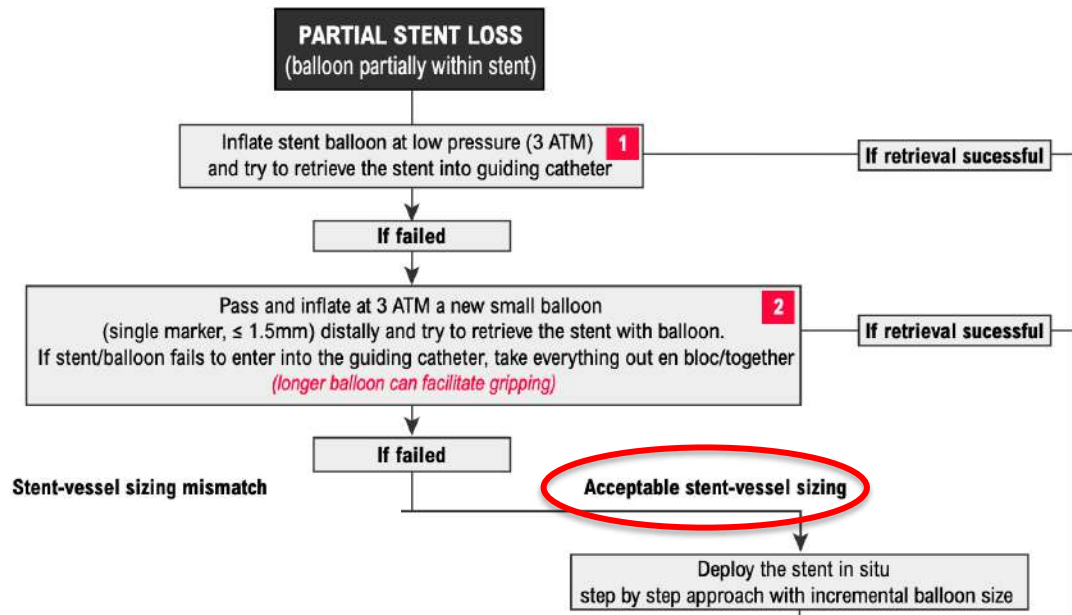
(single mark
If stent/balloon fails

2
Inflate balloon
and push the stent with balloon.
Retrieve everything out en bloc/together
(if possible)

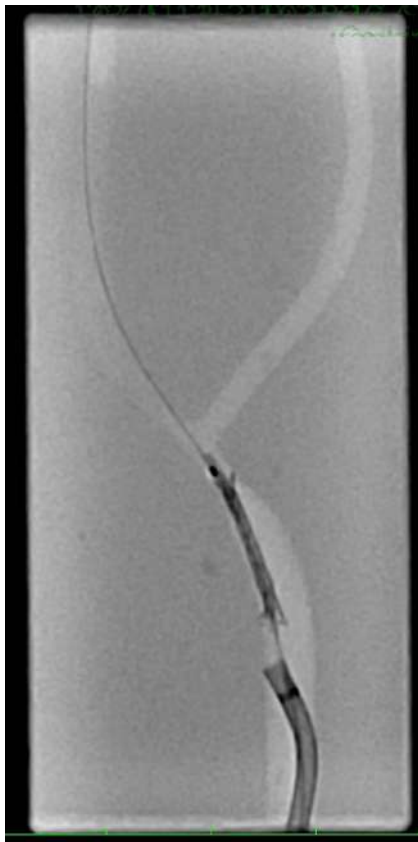


Problème du retrait



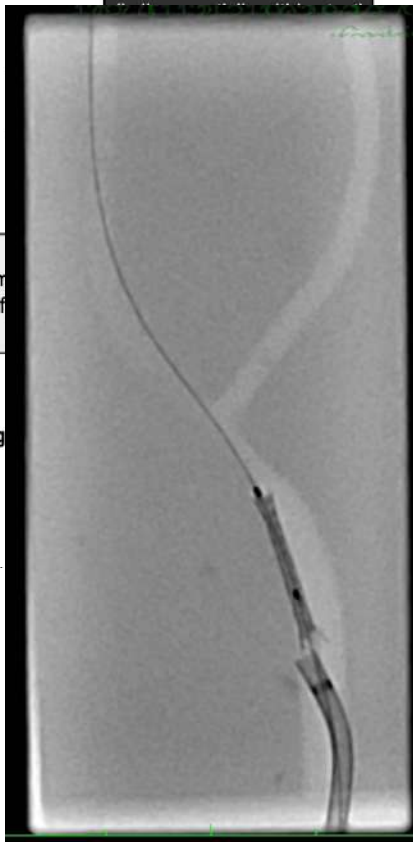


PARTIAL STENT LOSS



(single m
If stent/balloon f

Stent-vessel sizing

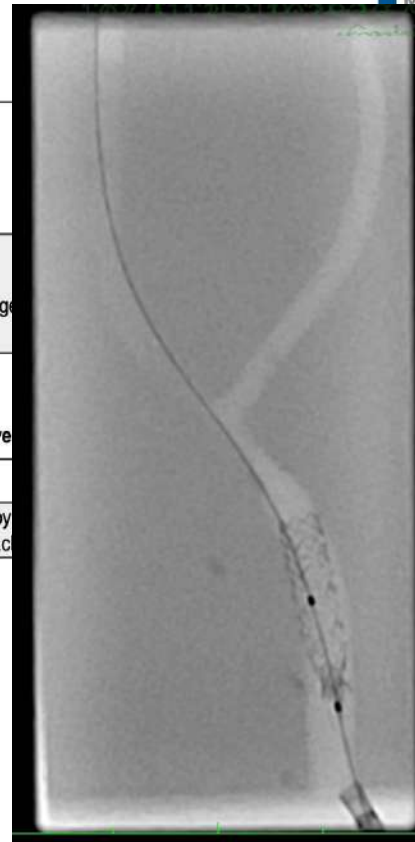


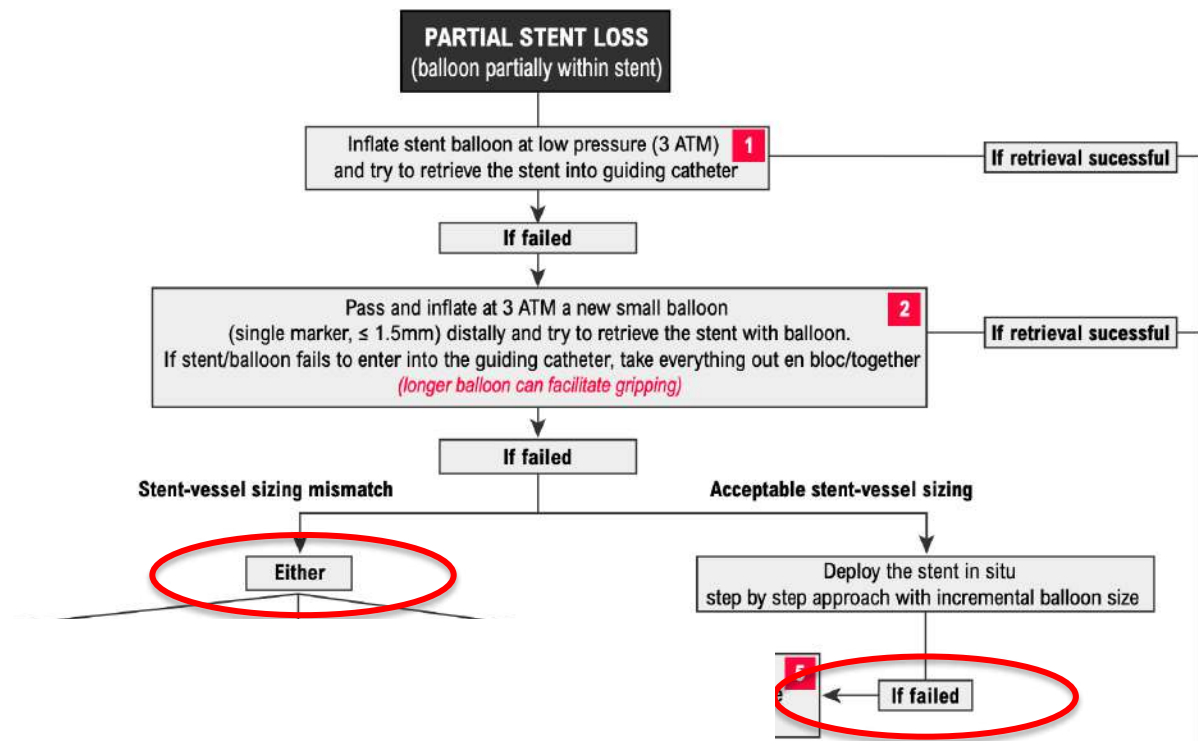
1

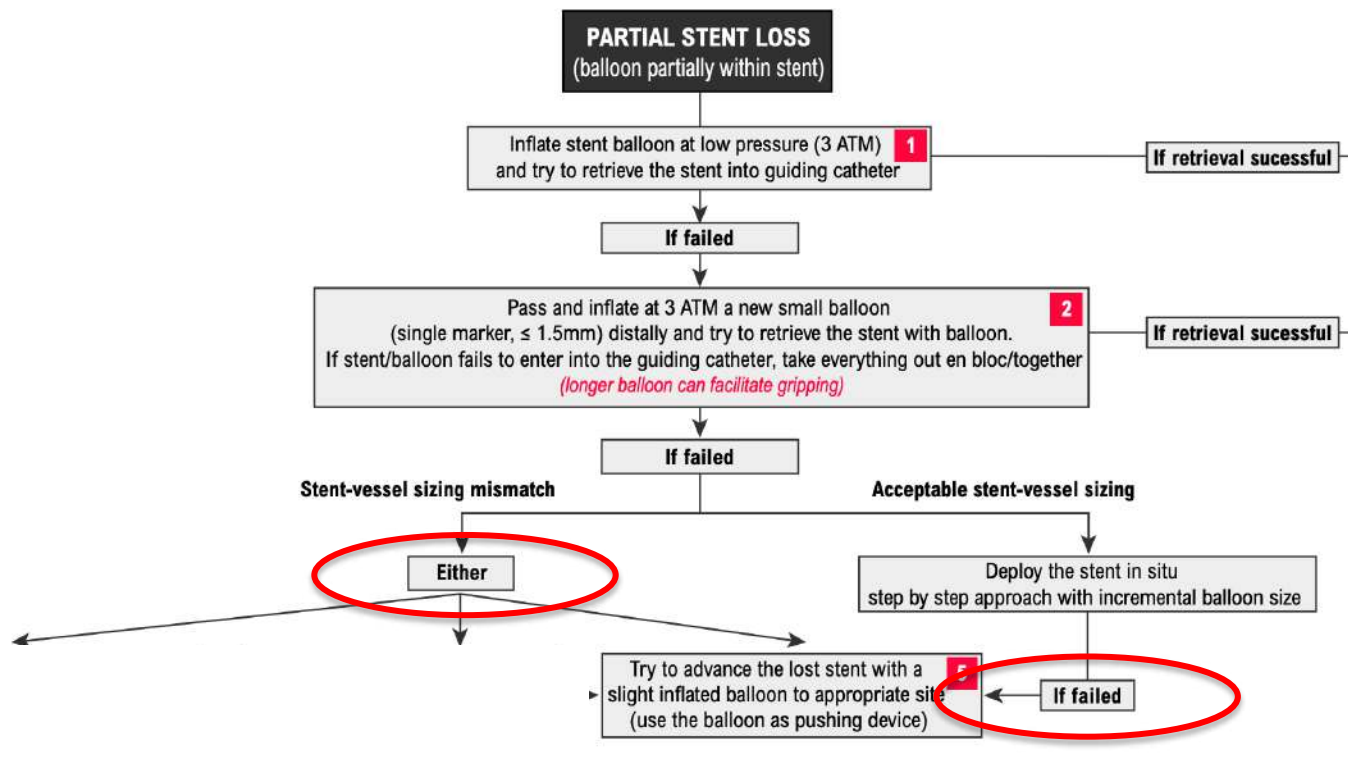
n
ent with balloon.
ing out en bloc/toge

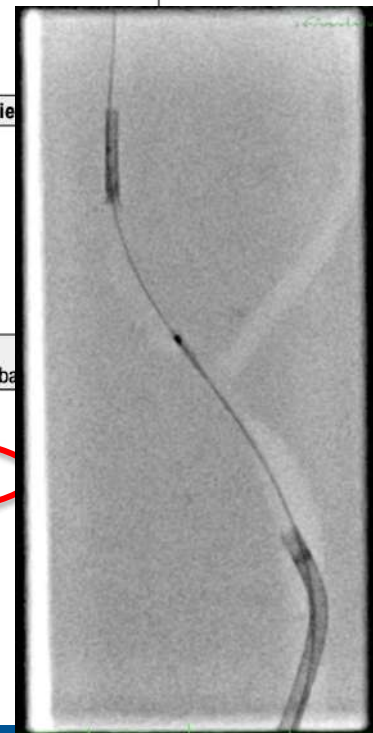
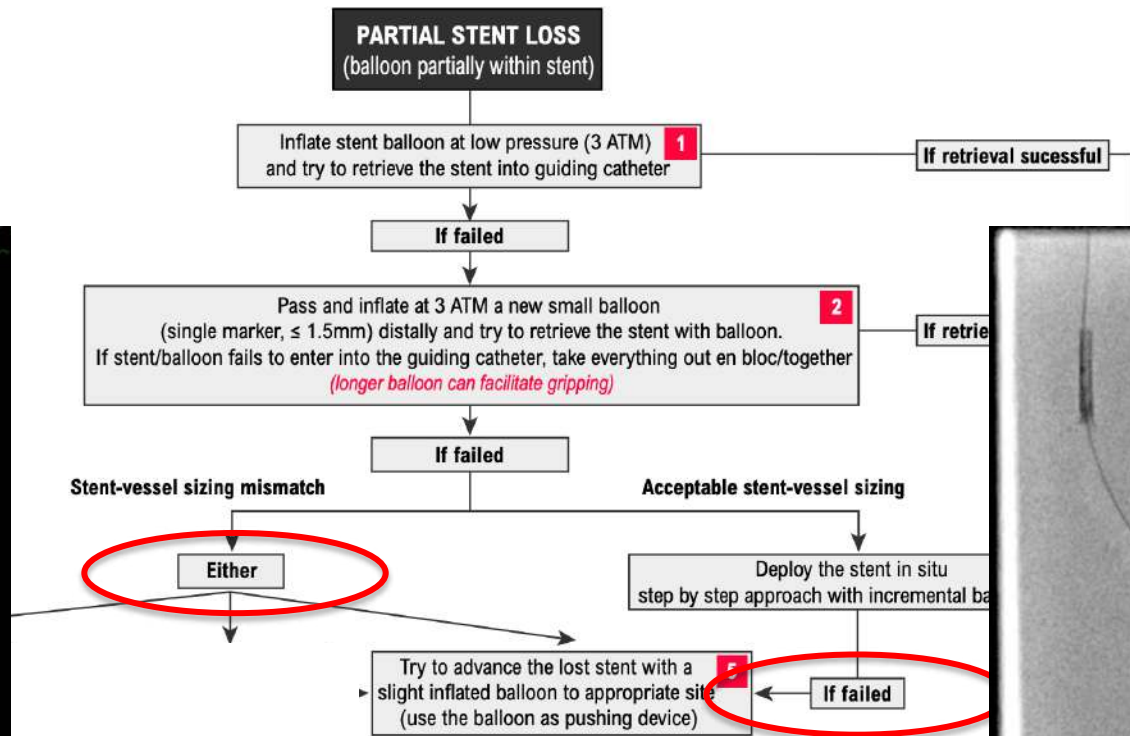
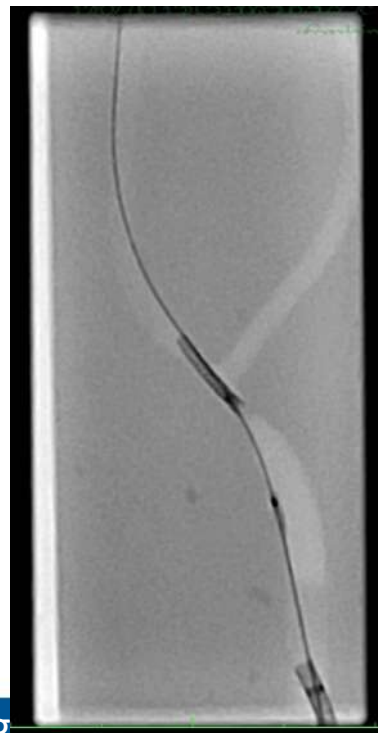
acceptable stent-ve

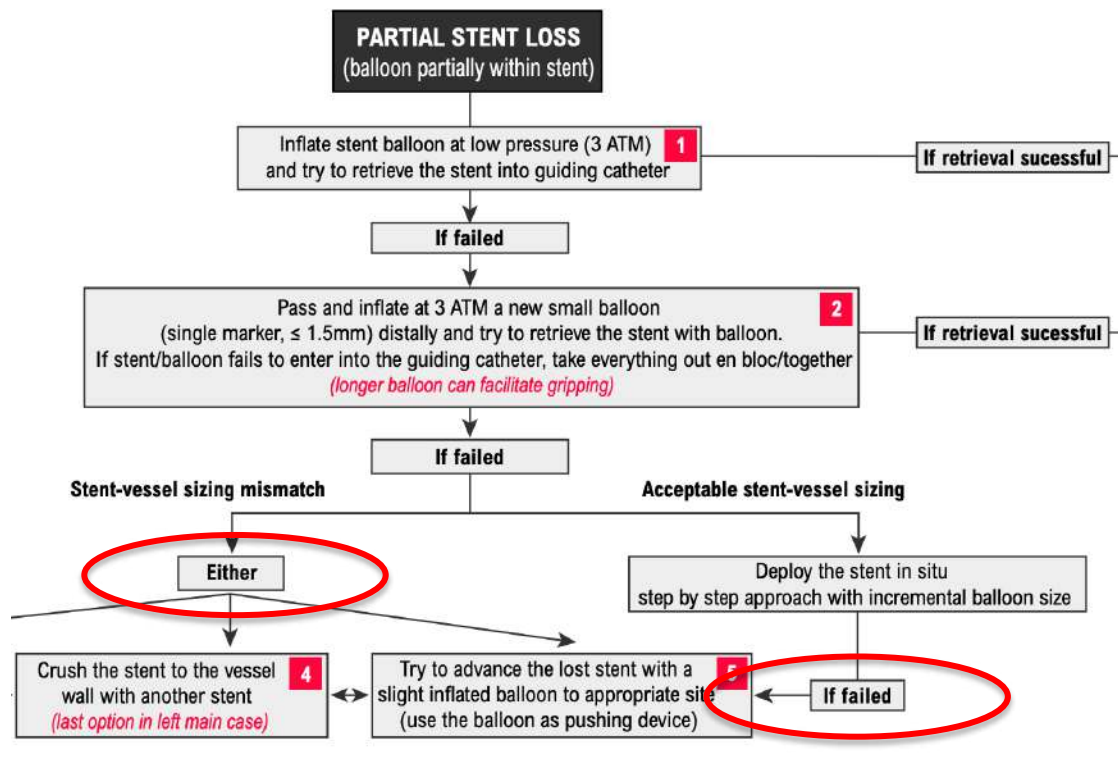
Deploy
step by step approach

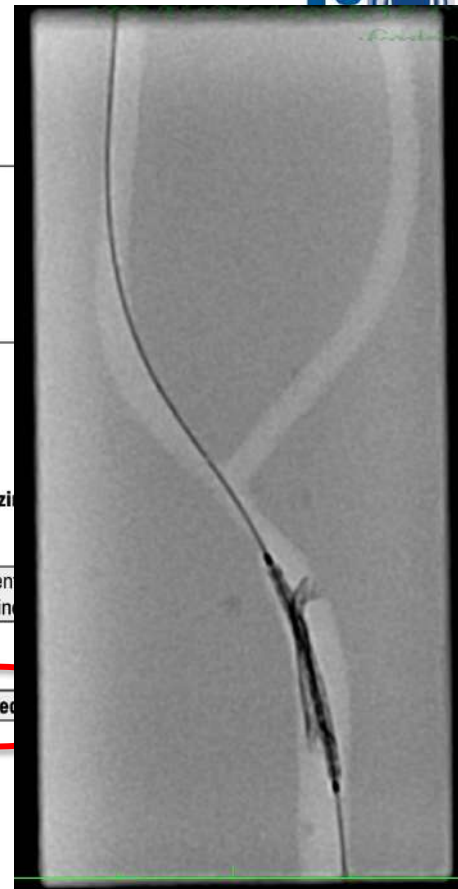
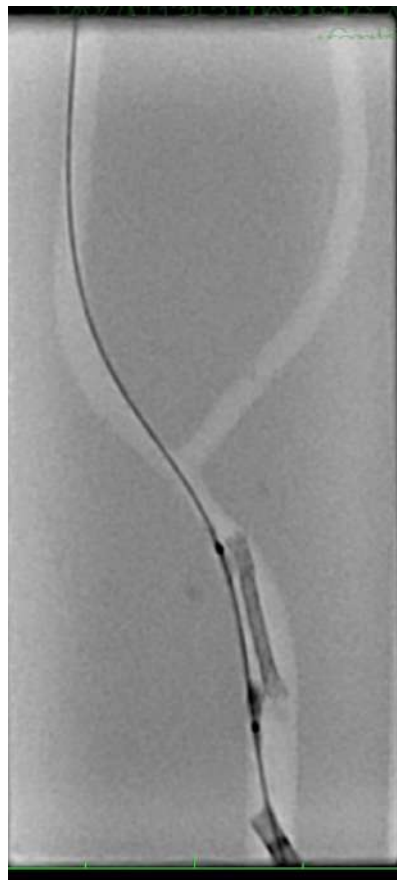












PAR
alloo

ent ba
etriev

infla
n) dis
o the
ger be

slig

size

sten
th in

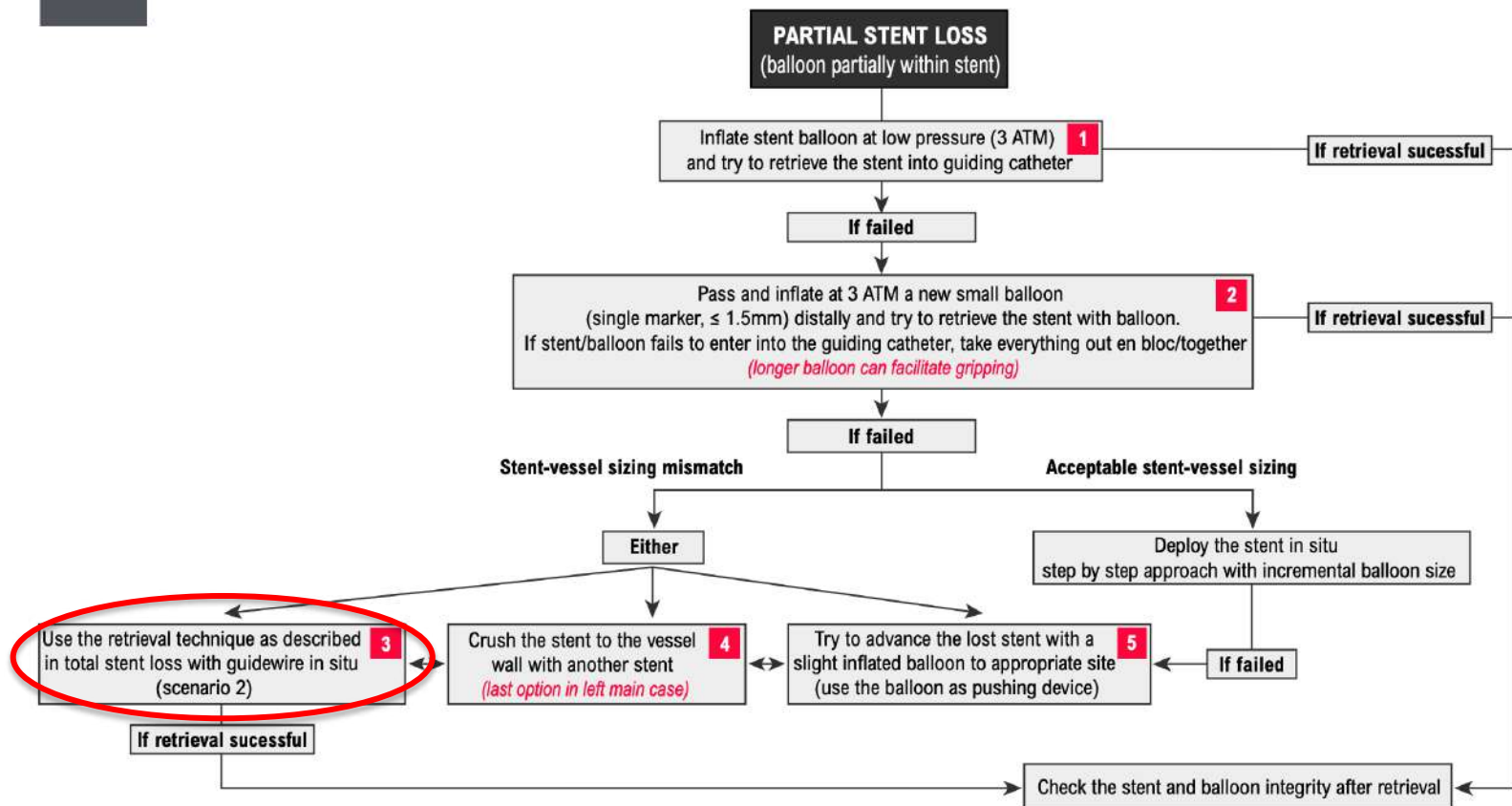
ailed

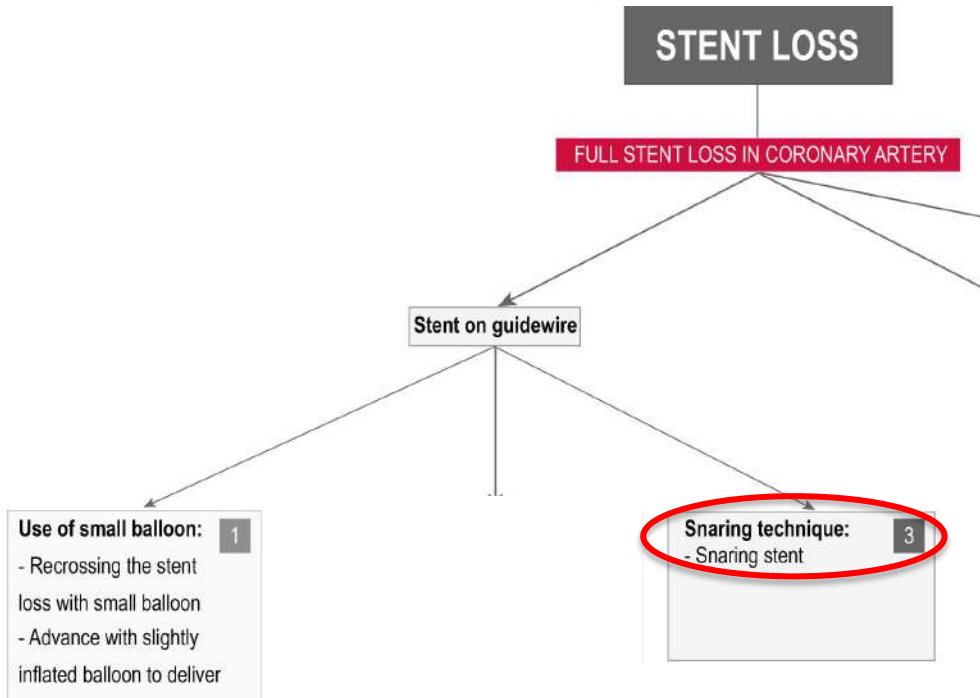
successful

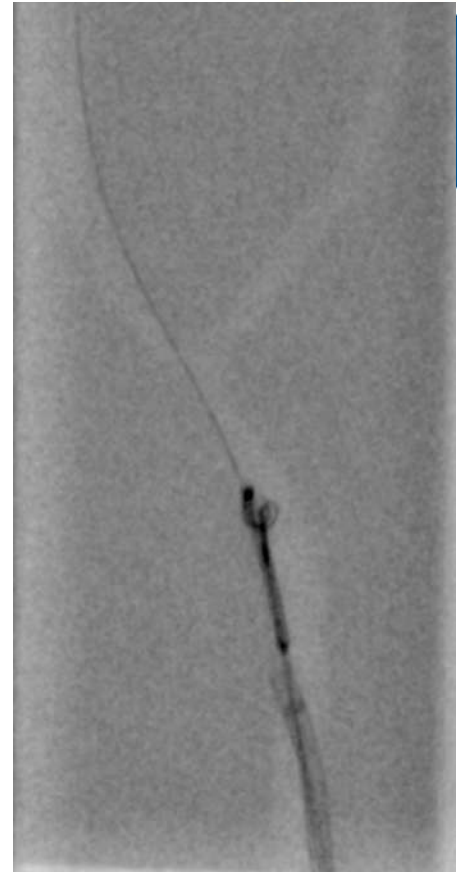
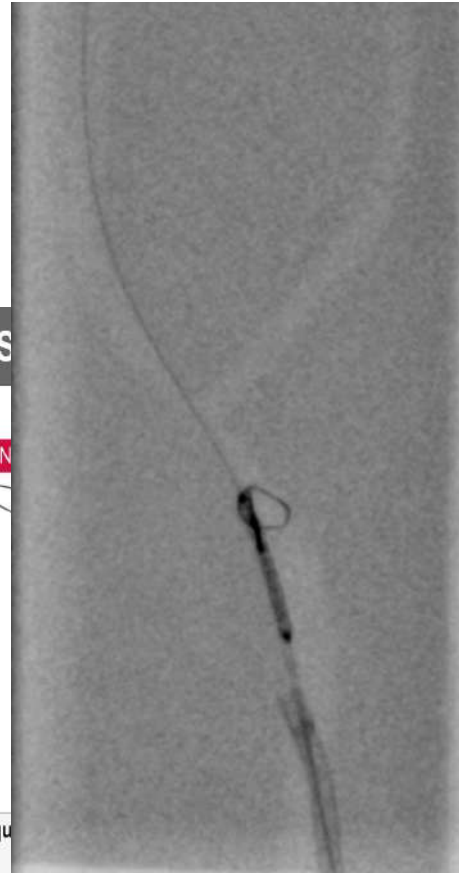
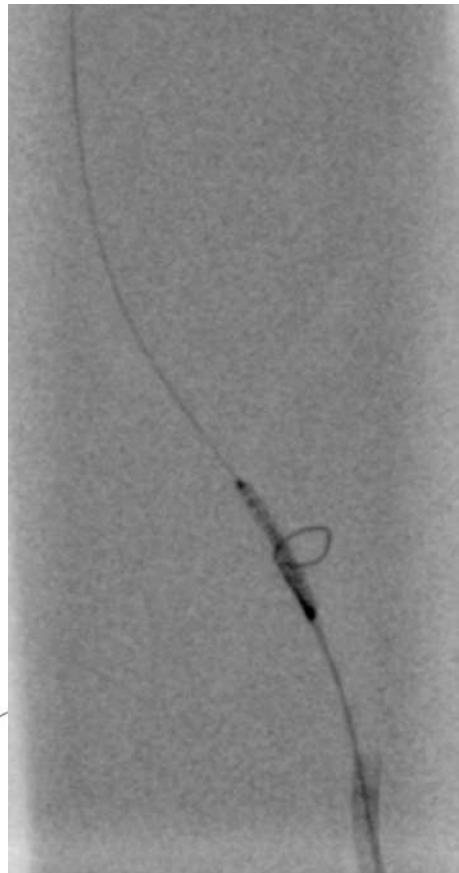
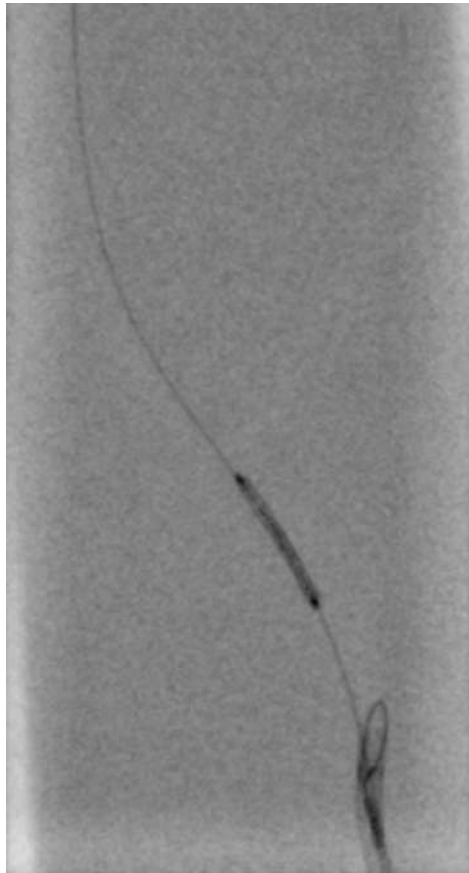
successful

Advance the lost stent with a
balloon to appropriate site
(balloon as pushing device)

If failed

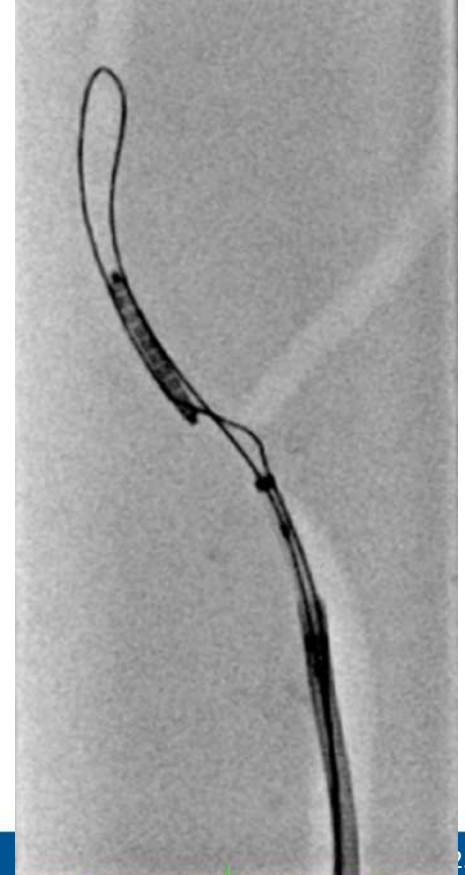
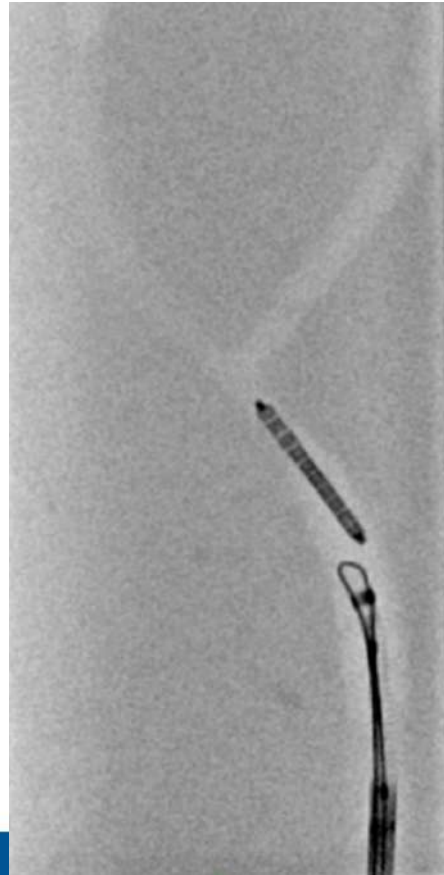
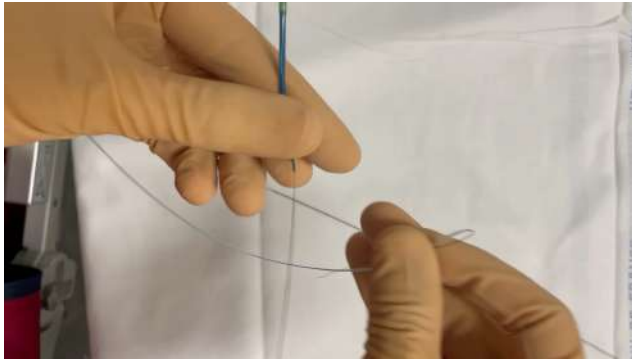
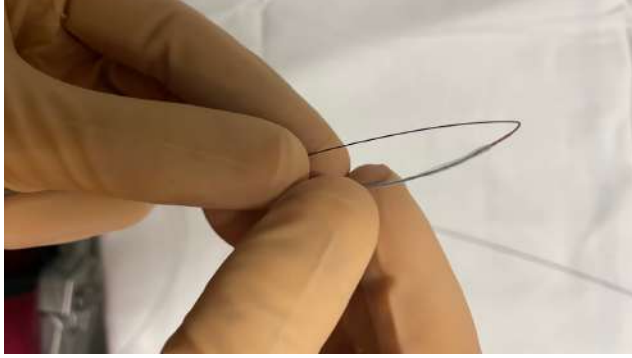


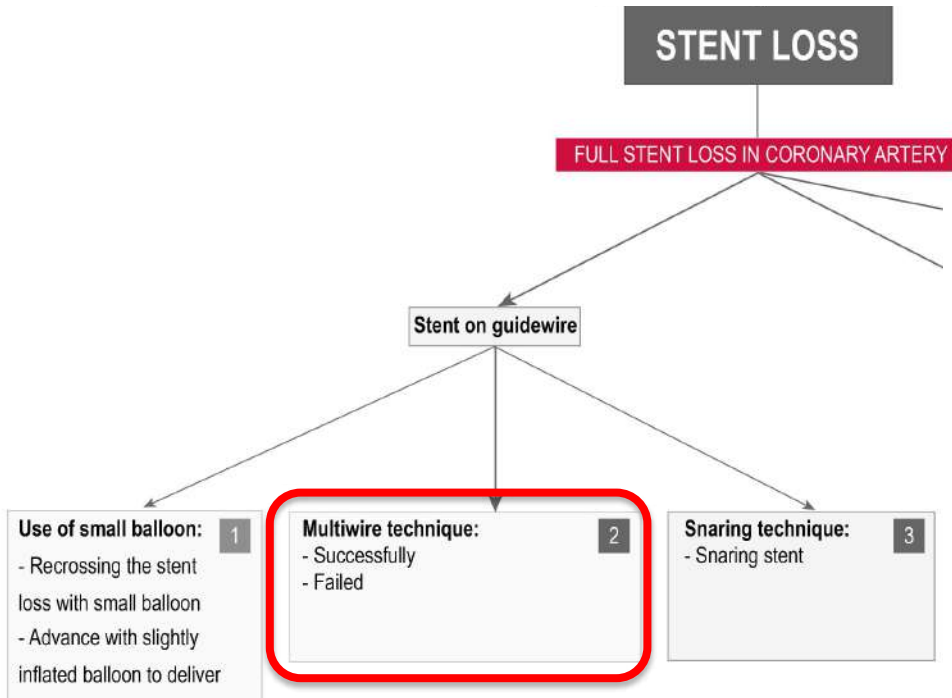




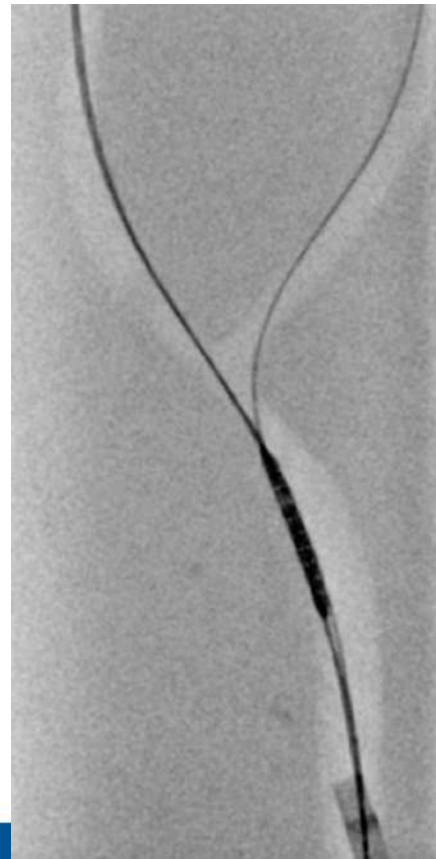
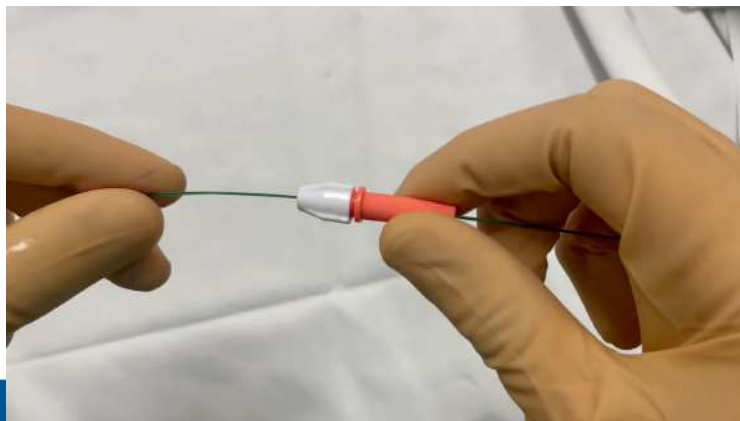
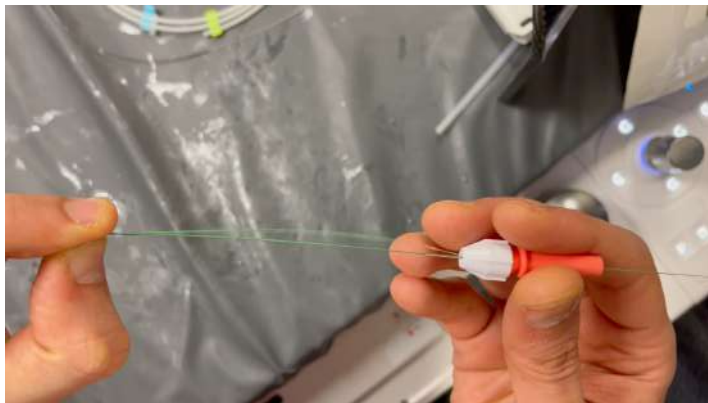
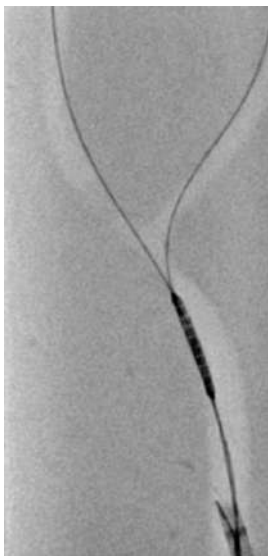
loss with small balloon
- Advance with slightly
inflated balloon to deliver

Homemade Snare





Multiwire technique

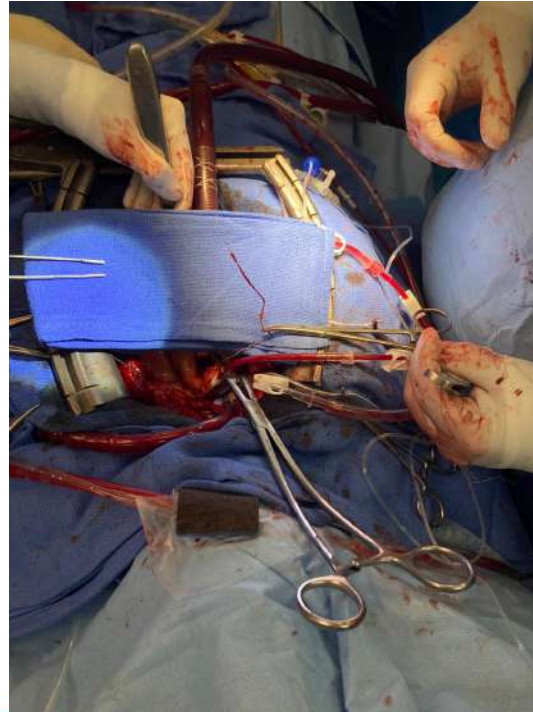
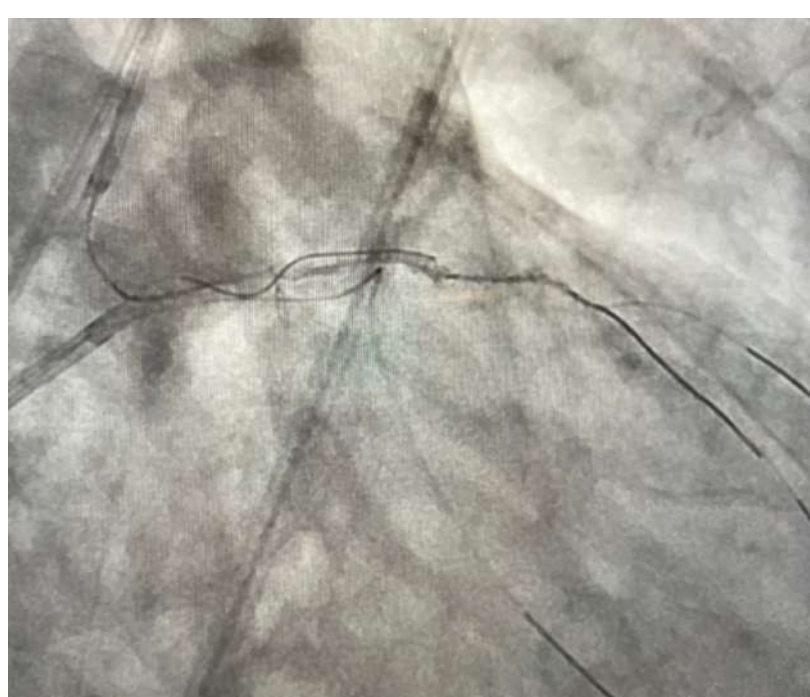


Multiwire technique

- Avoir guide au milieu stent ou maille
- Guides dans plusieurs branches
- Retrait autre matériel



Multiwire technique



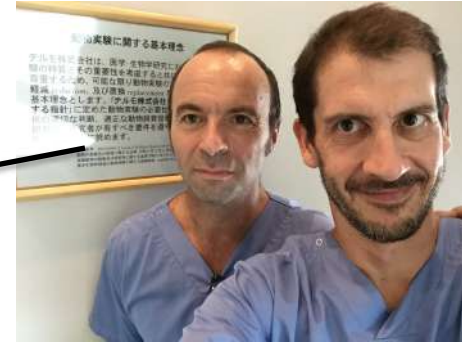
Take Home message

- Techniques multiples : multiwire +++



決してステントを使用しない /

Never with stent...!!!



- Evaluer dangerosité immédiate et long terme du stent desserti
- Retirer ou implanter ?