



La valve ne s'ouvre pas...

Thibault PAMART

Institut Cœur Poumon – CHU de LILLE



Asthme modéré

Polyarthrite rhumatoïde

2021 Mastectomie gauche + ChimioT + radioT

Angioplastie d'aorte abdominale sous rénale

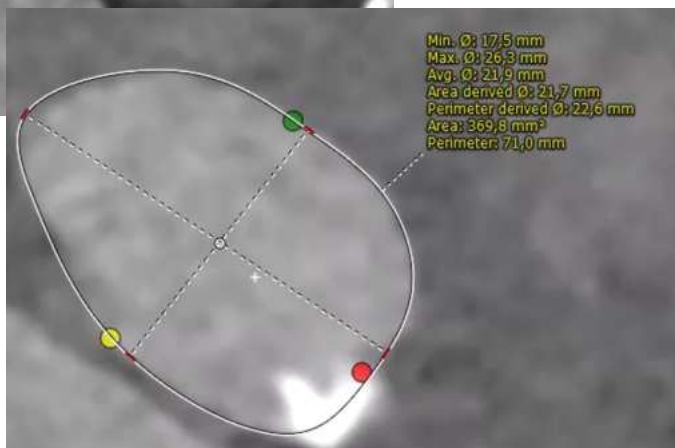
2022 Choc cardiogénique

- BAV complet → pace maker 2022
- IM de haut grade / rupture de cordage → Mitraclip NTW 08.2023
- RAo modéré

ETT post Mitraclip: RAo serré (V_{\max} 4,7m/s, G_{moy} 50mmHg, IP 0,13)

STS_{score} 27,1% → TAVI 09.2023

Planification



Diameter (mm)	Perimeter (mm)	Area (mm ²)	Sapien 3*				Evolut R				Portico			
			20	23	26	29	23	26	29	34	23	25	27	29
17.8	56	250					56.5							
18.2	57.1	260												
18.5	58.2	270	273											
18.9	59.3	280										60		
19.2	60.4	290												
19.5	61.4	300												
19.9	62.4	310					62.8							
20.2	63.4	320												
20.5	64.4	330												
20.8	65.3	340	345	338										
21.1	66.3	350										66		
21.4	67.2	360												
21.7	68.2	370												
22	69.1	380												
22.3	70	390												
22.6	70.9	400												
22.9	71.8	410												
23.1	72.6	420												
23.4	73.5	430		430				72.3				73		
23.7	74.3	440												
23.9	75.2	450												
24.2	76	460												
24.5	76.8	470												
24.7	77.6	480												
25	78.4	490											79	

Planification



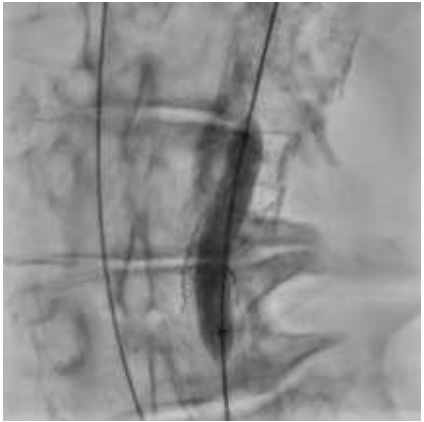
EVOLUT PRO+ 26mm

Voie radiale droite 6F

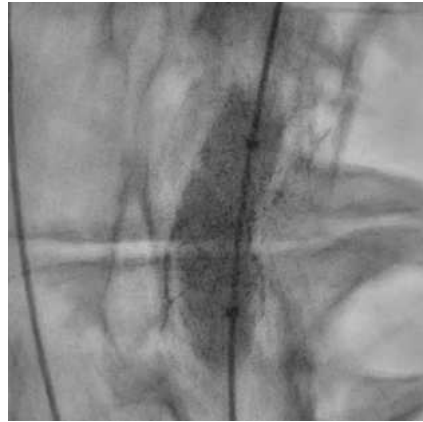
Voie fémorale droite 18F pour désilet long et in-line sheath

Voie fémorale gauche 5F pour SEES

Gestion de l'abord vasculaire



ARMADA 7.0x40mm



ARMADA 8.0x20mm

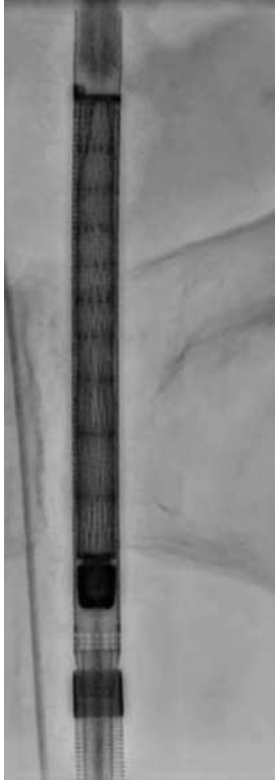
Gestion de l'abord vasculaire

Dilatateur Cook 16F & 18F

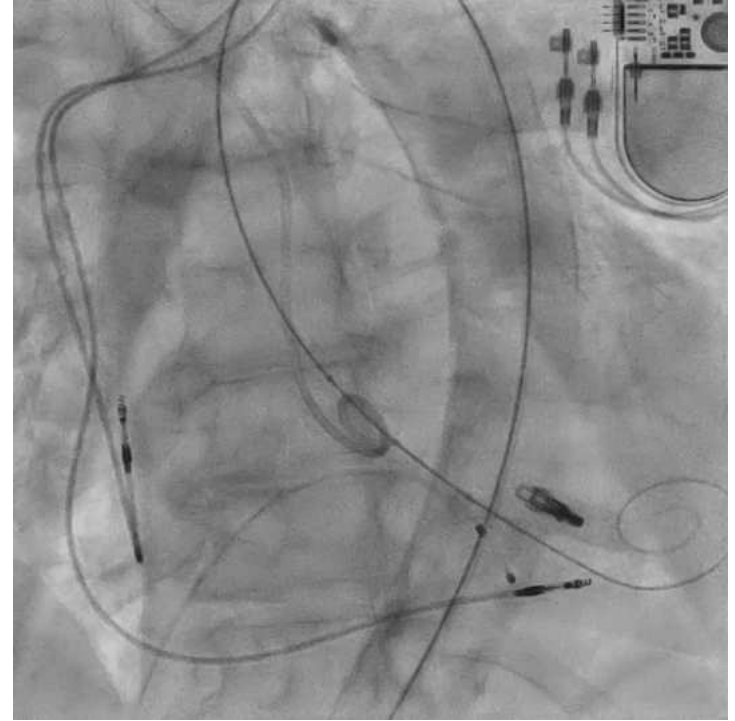
Désilet EDWARDS eSheath 14F / Back-up Meier



Préparation valvulaire

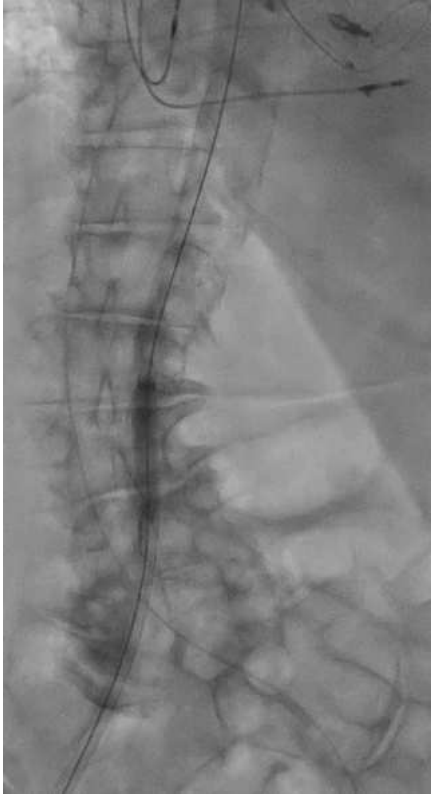


Cusp overlap

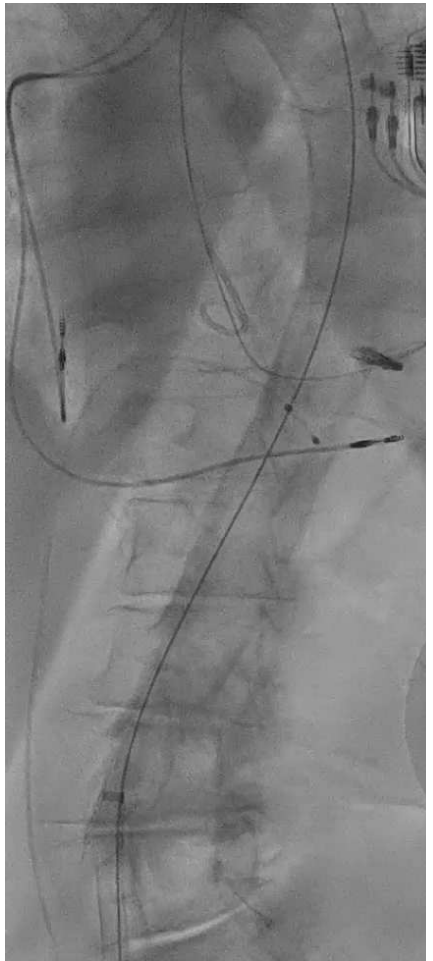


Pré dilatation NUCLEUS 20mm

Montée du Porteur



Pré dilatation eSheath
ARMADA 7x40mm

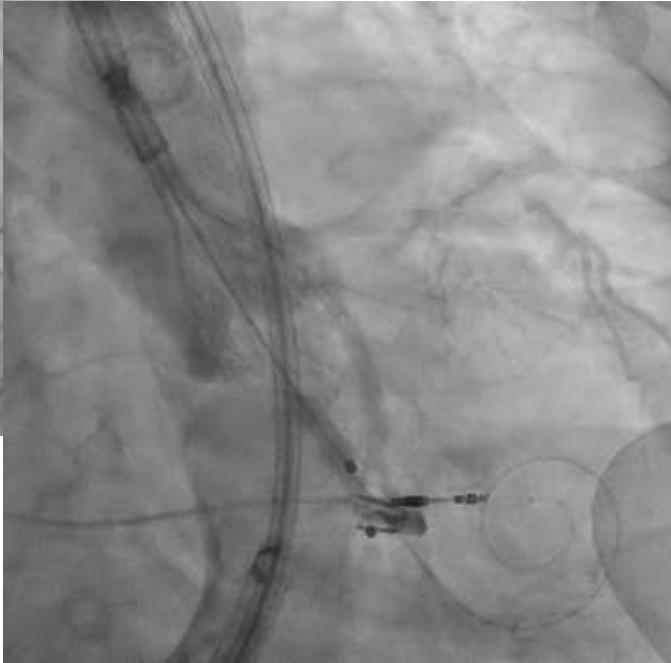
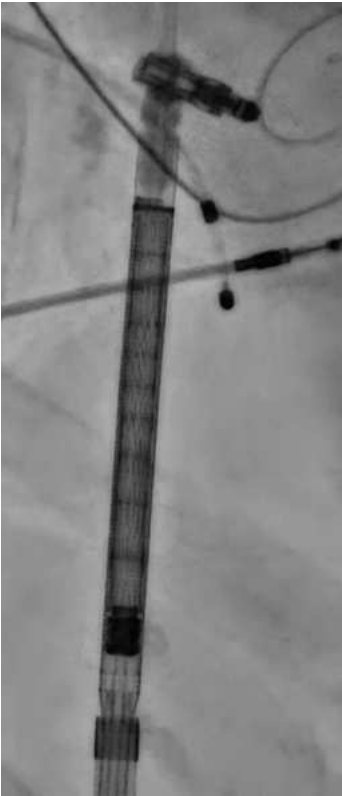


Implantation



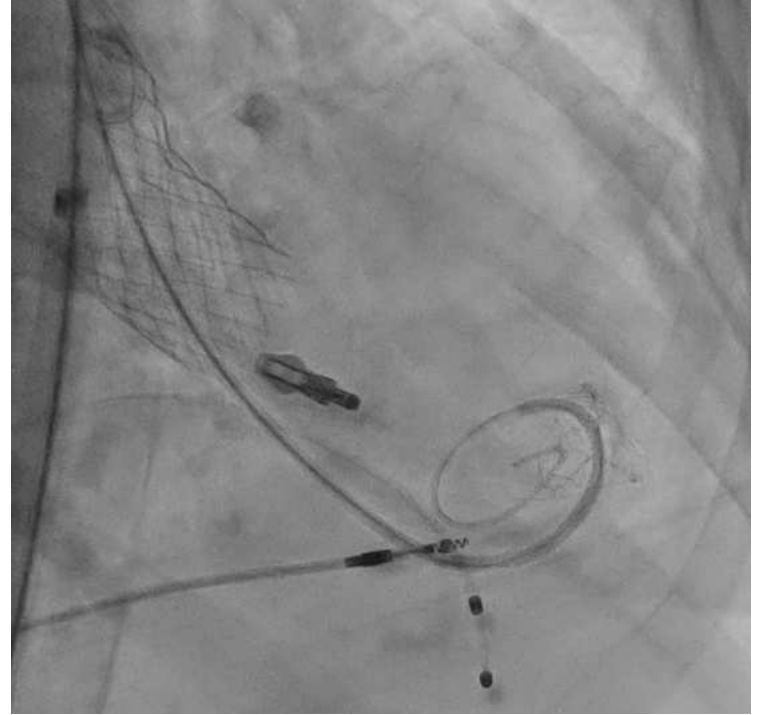
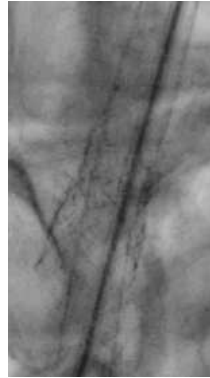
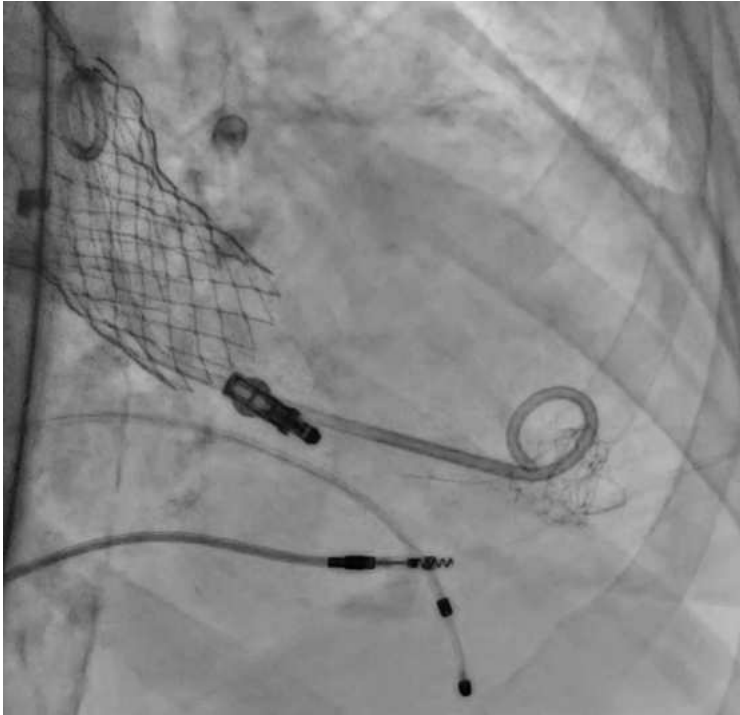
La valve ne s'ouvre pas...
Que faire ?

Implantation #2



Résultat...





Fragment de stent dans le VG sécurisé par guide et Pigtail... Que peut-on faire ?

Stabilisation / Mobilisation

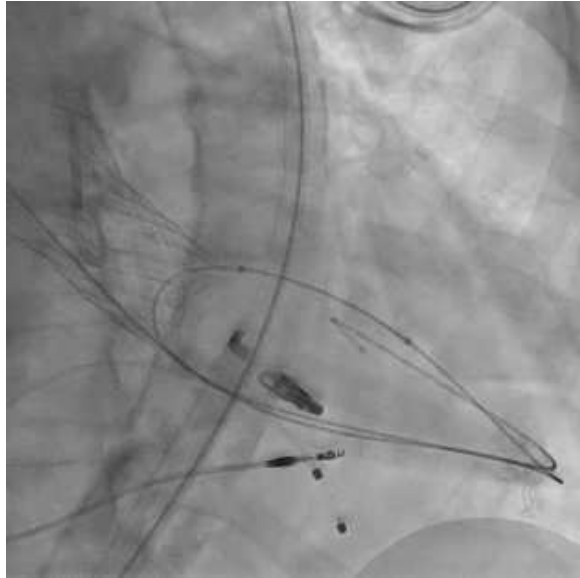


Guide J standard

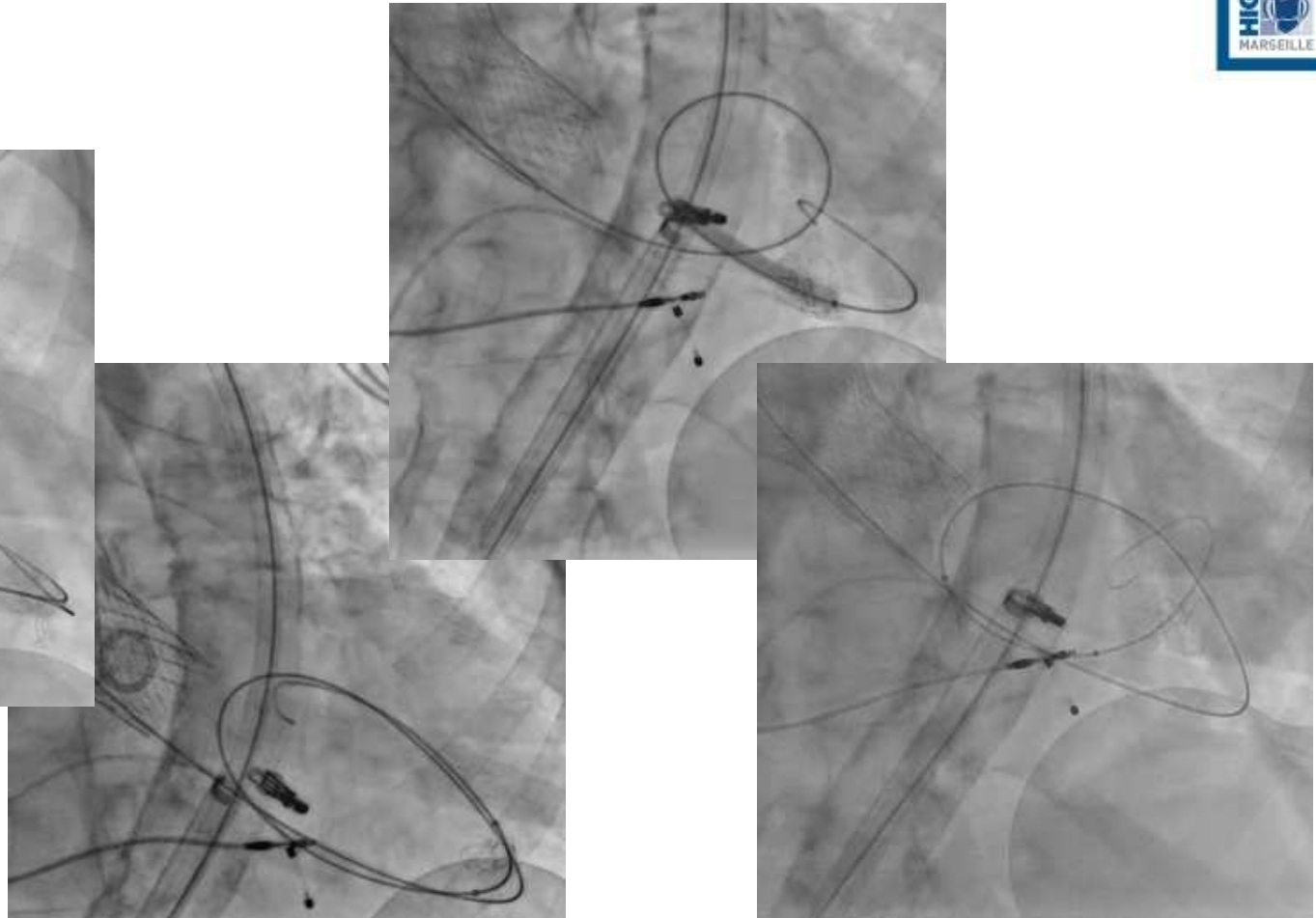


Désilet long Cook 12F

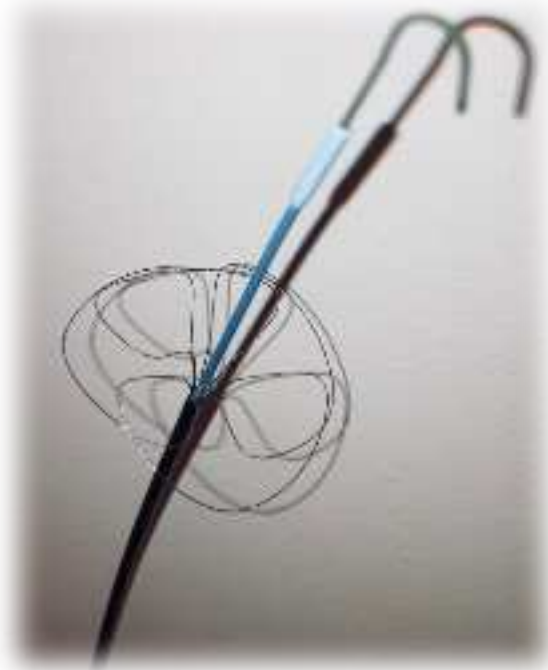
« Fogarty »



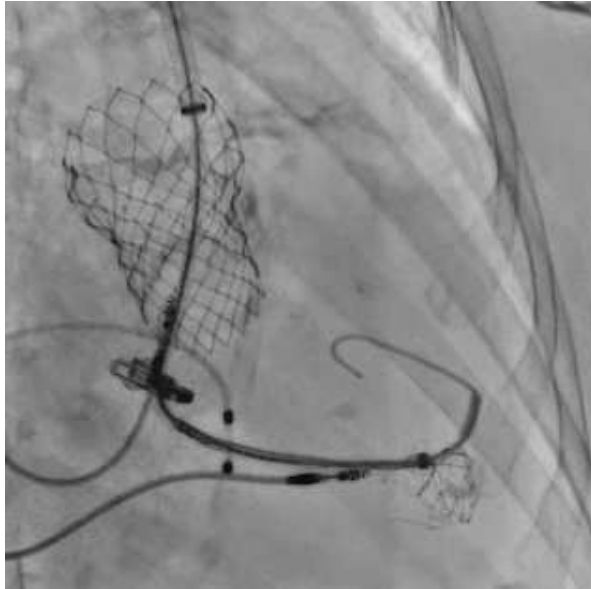
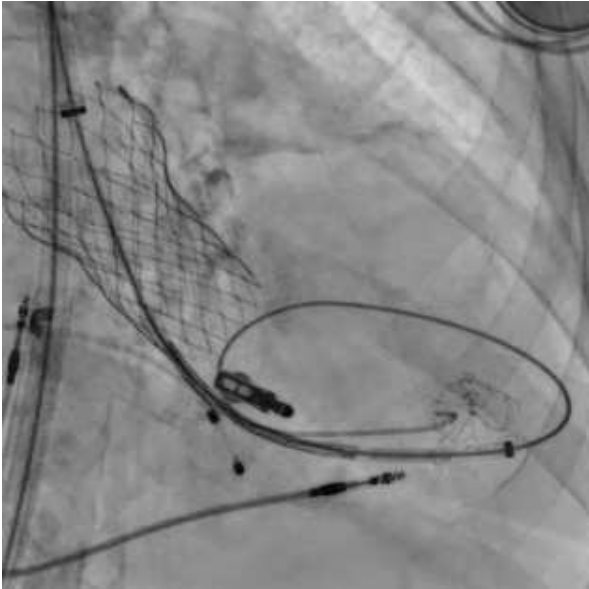
ARMADA 7.0x20mm



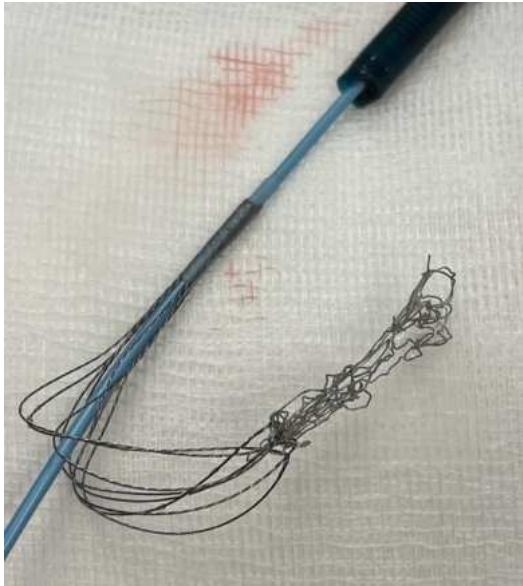
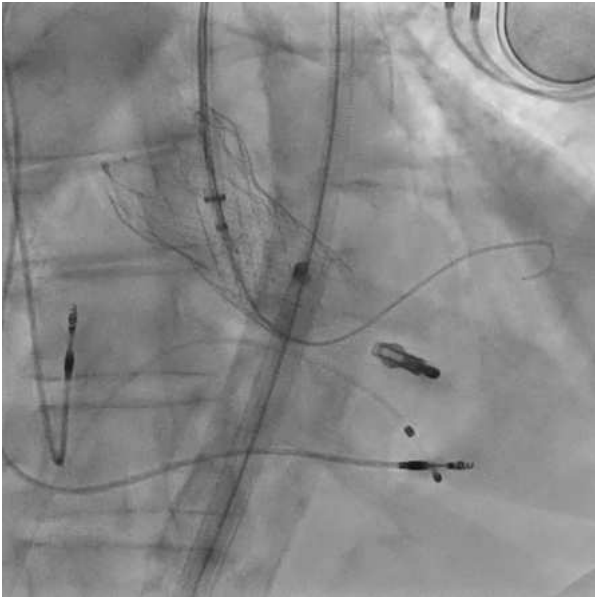
INDY OTW Vascular Retriever



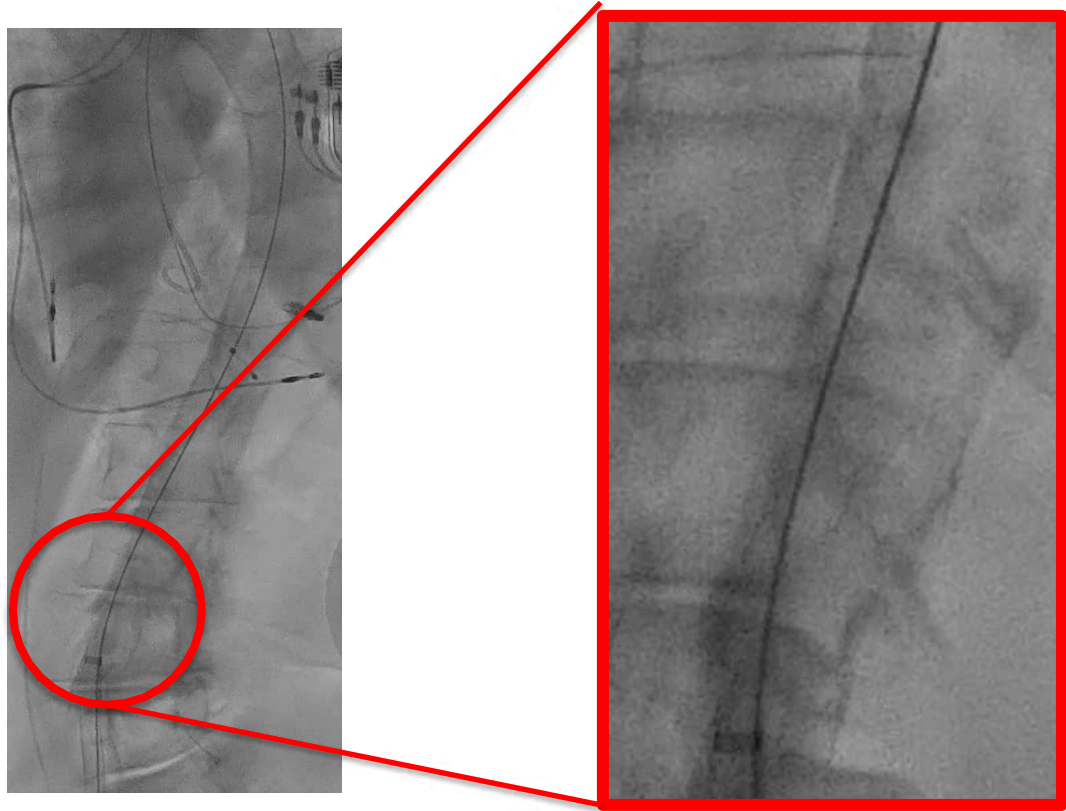
INDY OTW Vascular Retriever



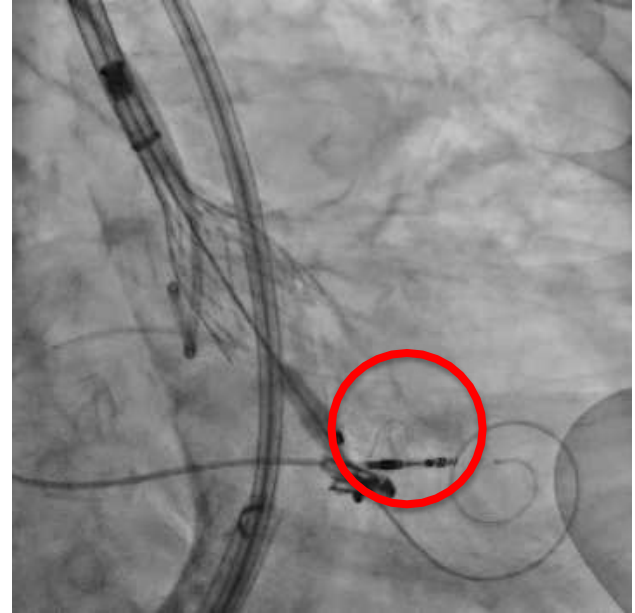
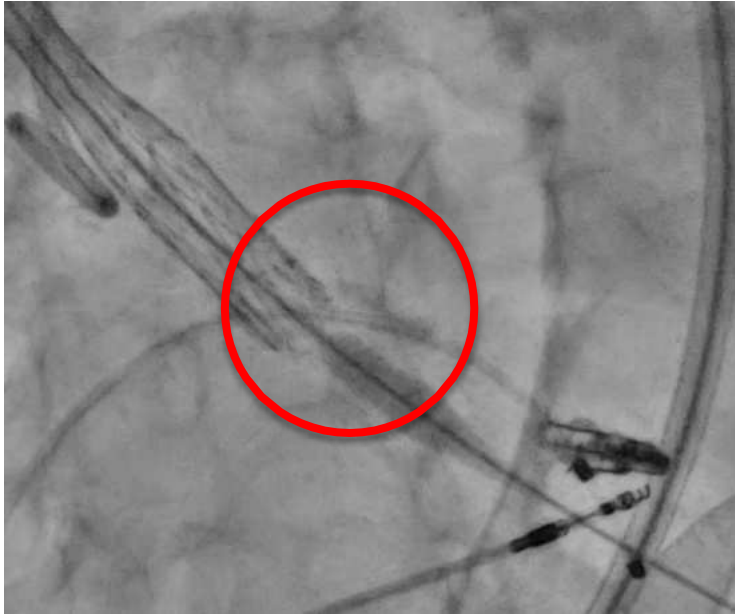
Extraction



Comment?

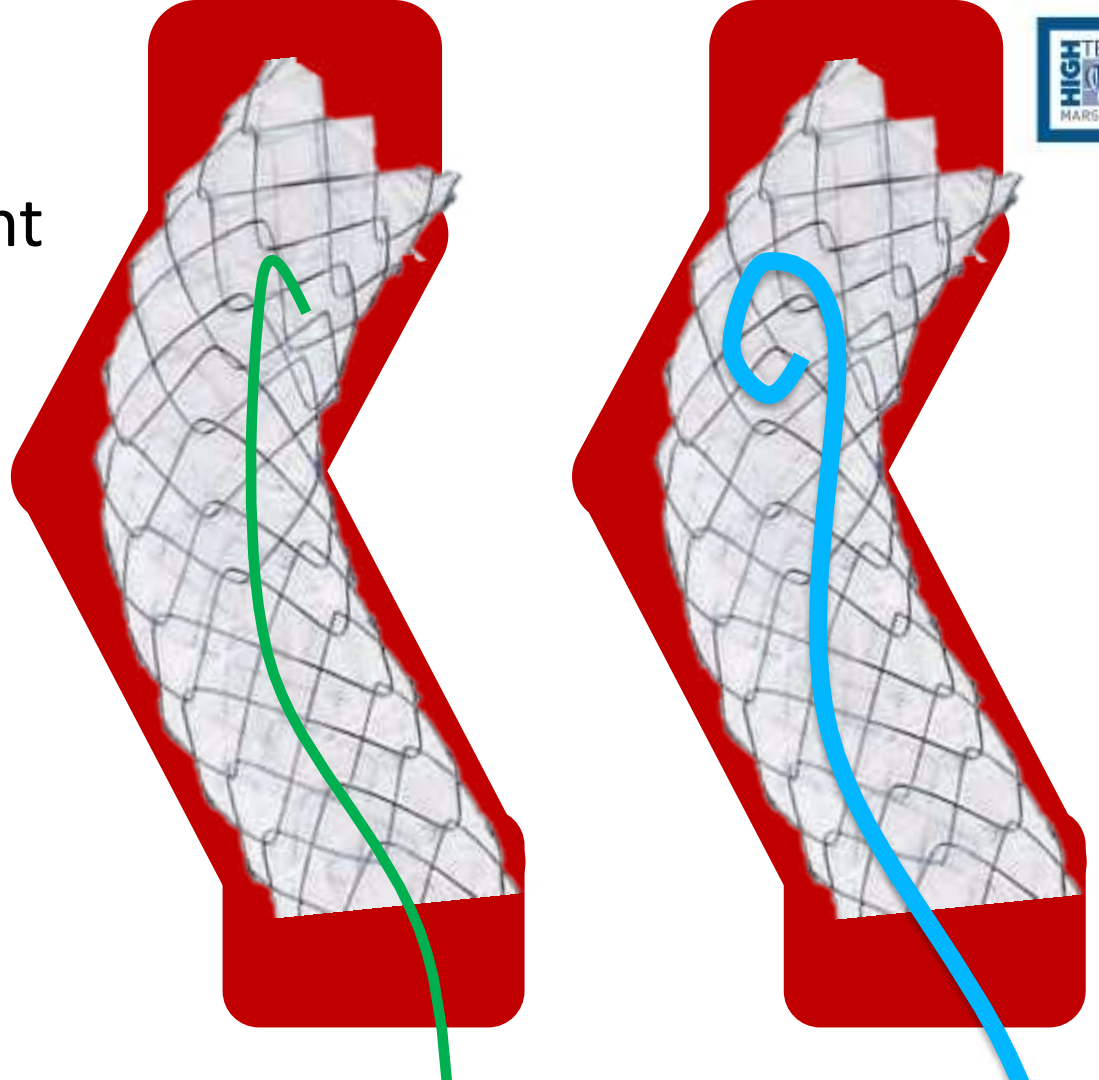


Comment?



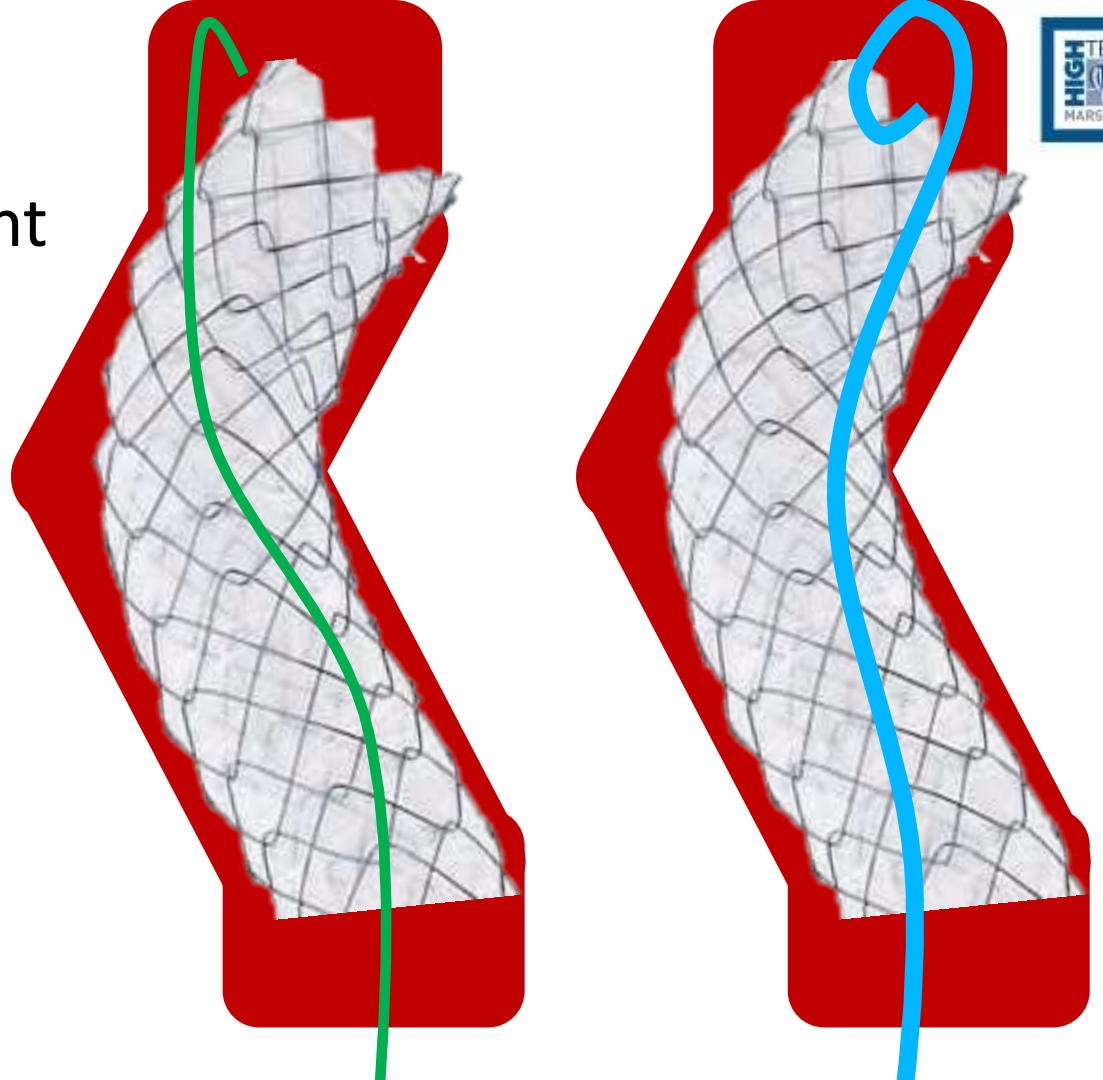
Tips & Tricks

Franchissement de stent aortique à la pig



Tips & Tricks

Franchissement de stent aortique à la pig



Tips & Tricks

INDY OTW



Merci de votre attention



PALAIS DU PHARO
□ MARSEILLE □

SAVE THE DATE
24 • 25 • 26
JANVIER 2024

WWW.HIGHTECH-CARDIO.ORG



Institut Cœur Poumon – CHU de LILLE