



**28-30
JANVIER
2026**

MARSEILLE
PALAIS DU PHARO

Accès difficile à la branche fille

Dr DROGOUL Laurent
Centre Cardio-Thoracique Monaco
Polyclinique St George Nice



Accès difficile branche fille:

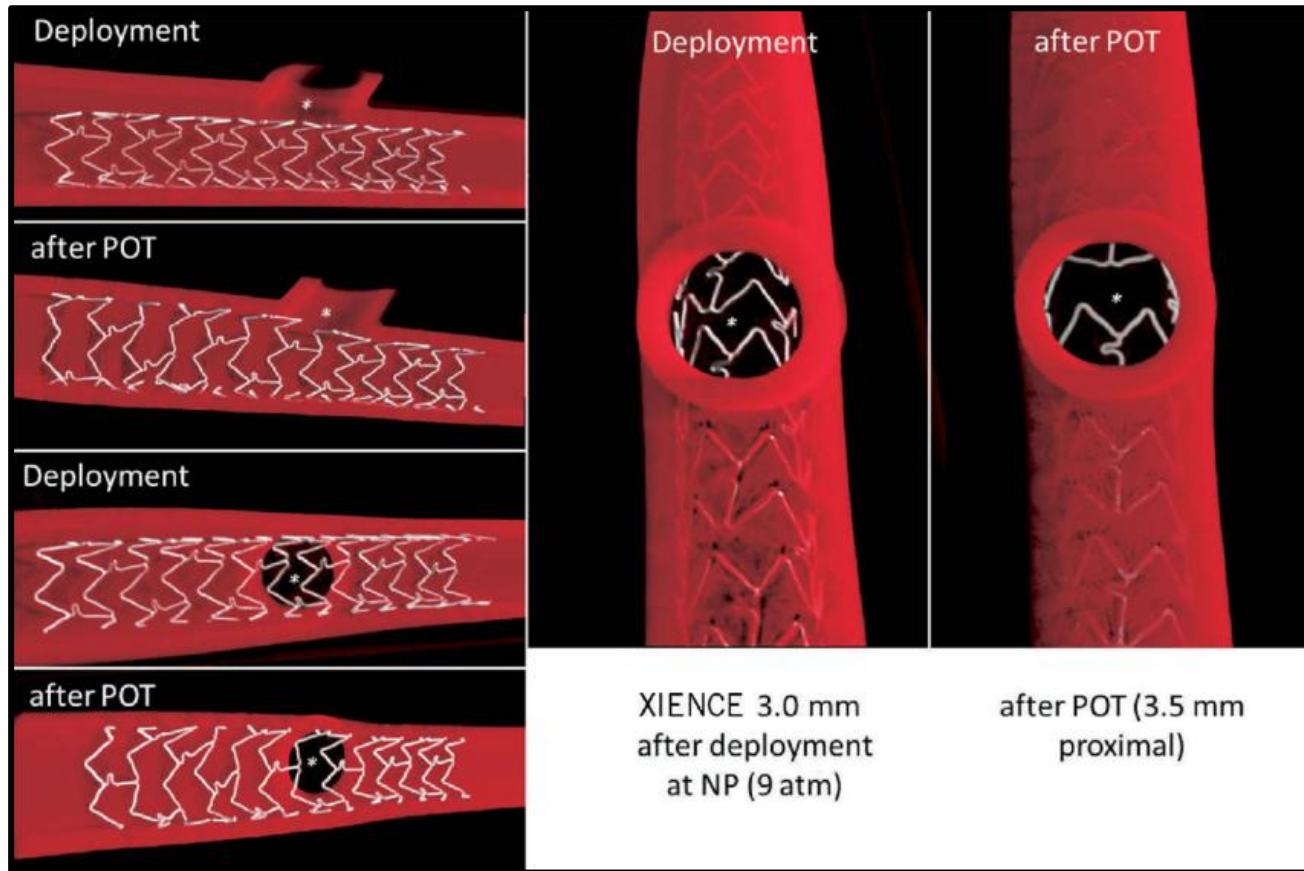
Prévention ++++

Protection de la branche fille par un guide

Accès difficile et perte de branche fille ...

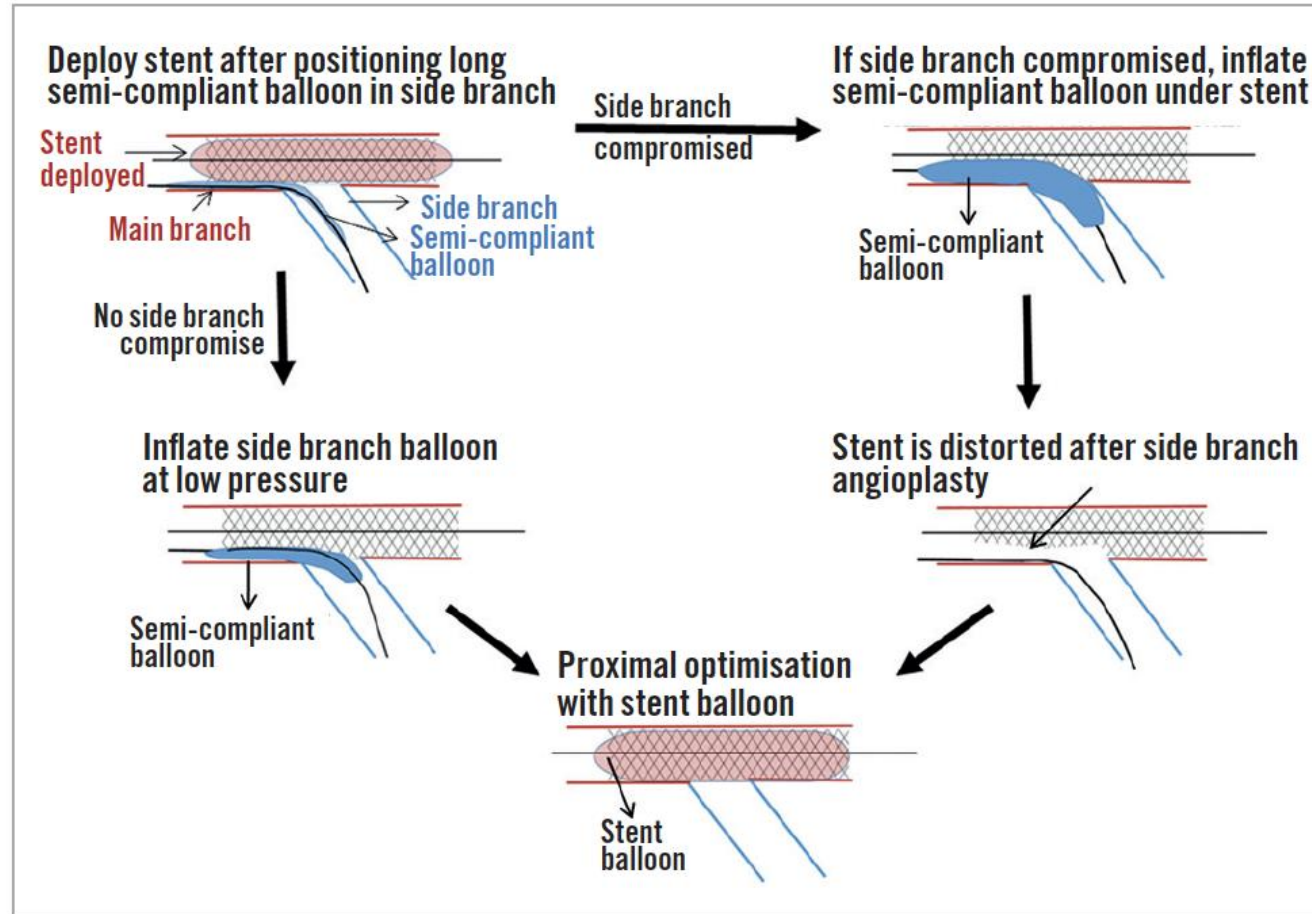
CAT

POT +++
7F+++



Accès difficile : prévention dans les cas extrêmes

Protection par ballon

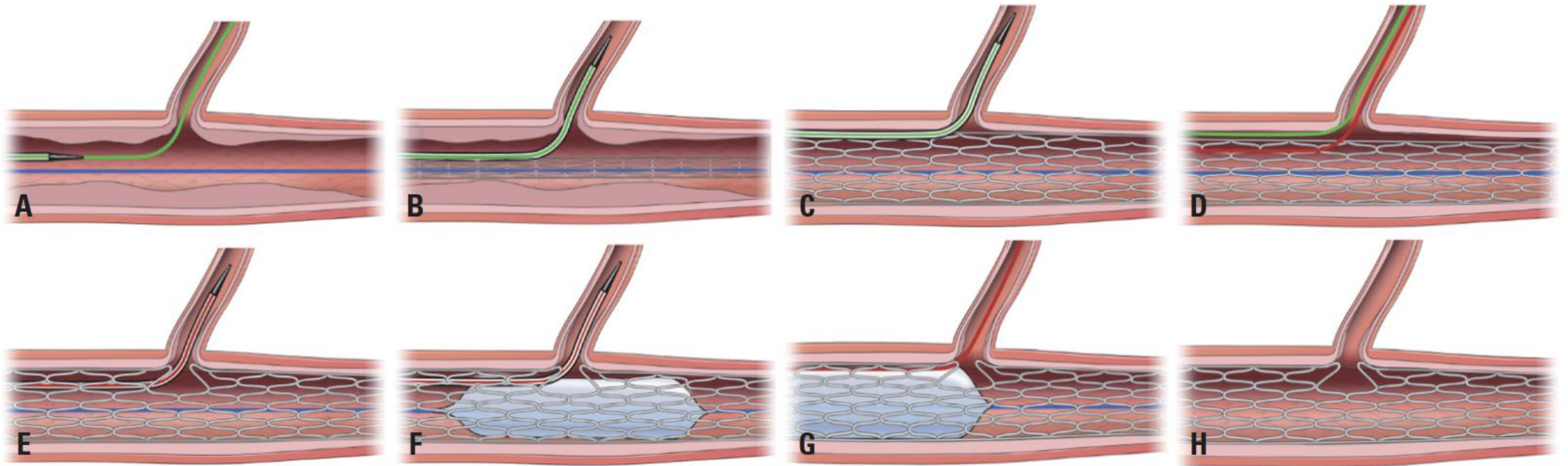


Risque de piéger la ballon ,rupture , déstructuration du stent MB

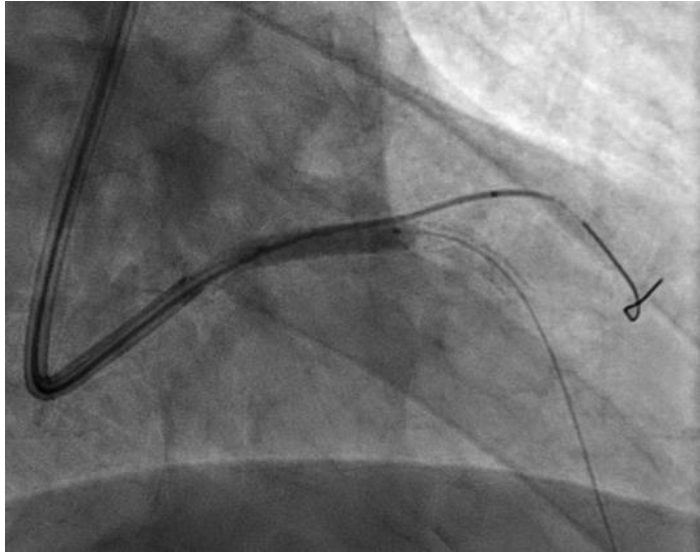
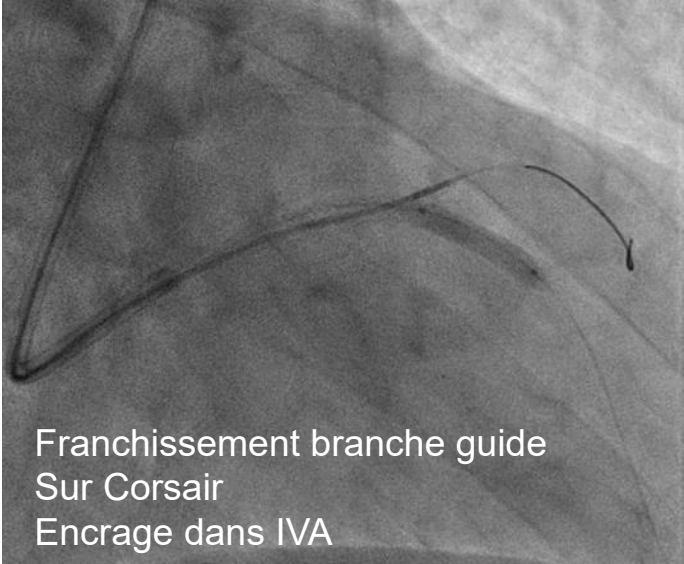
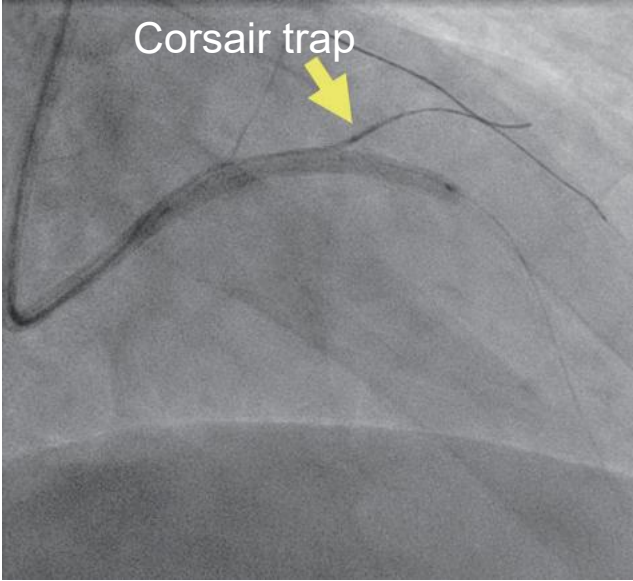
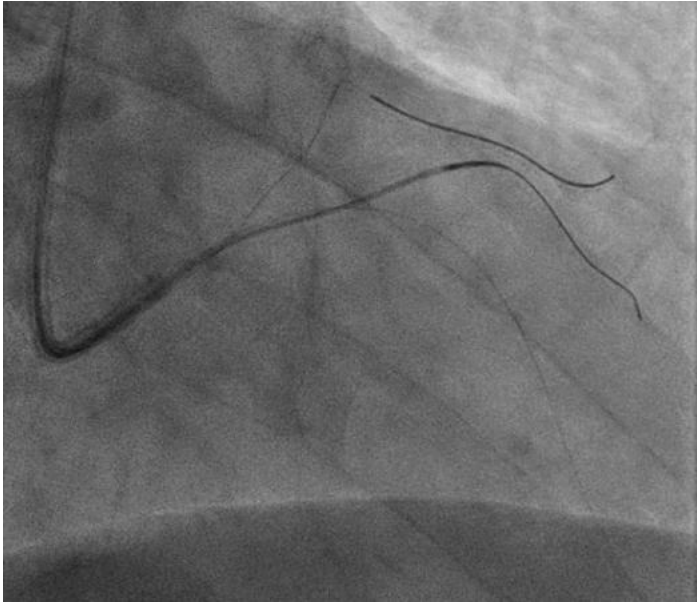
Accès difficile à la branche fille :prévention dans les cas extrêmes

*Protection par microcathéter Corsair
(7F +++)*

Consecutive Jailed- and Kissing-Corsair Technique: Side Branch Protection and Dilation during Stent Implantation



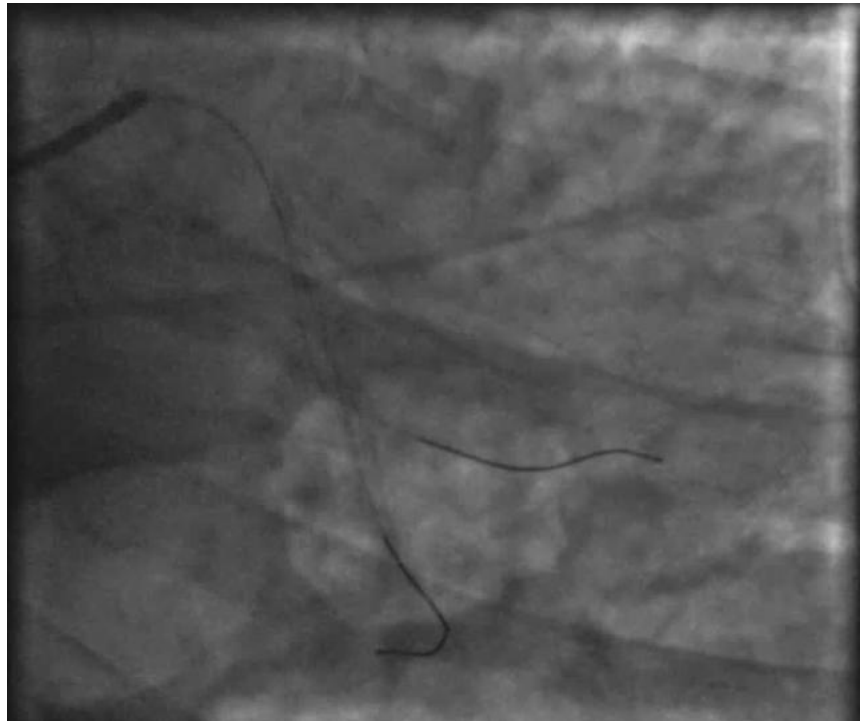
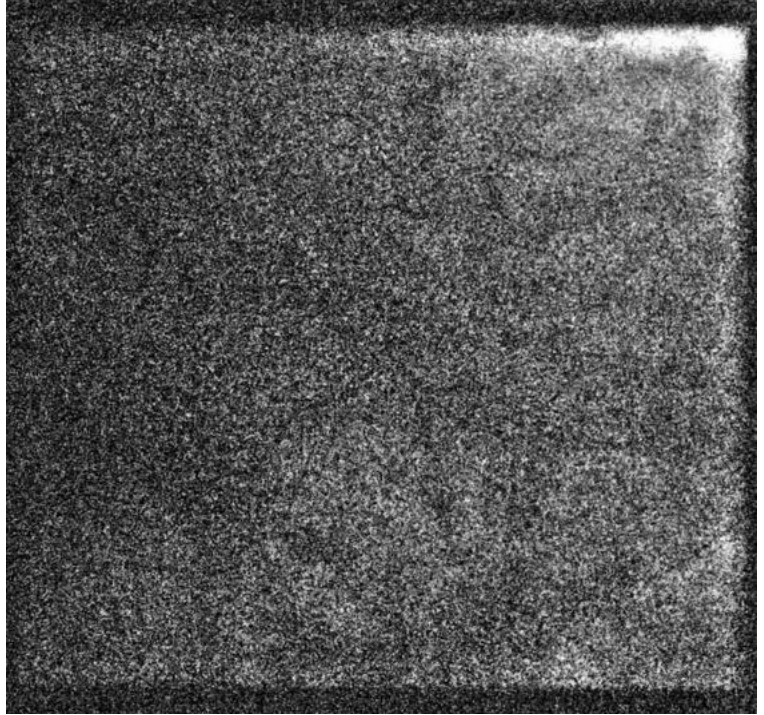
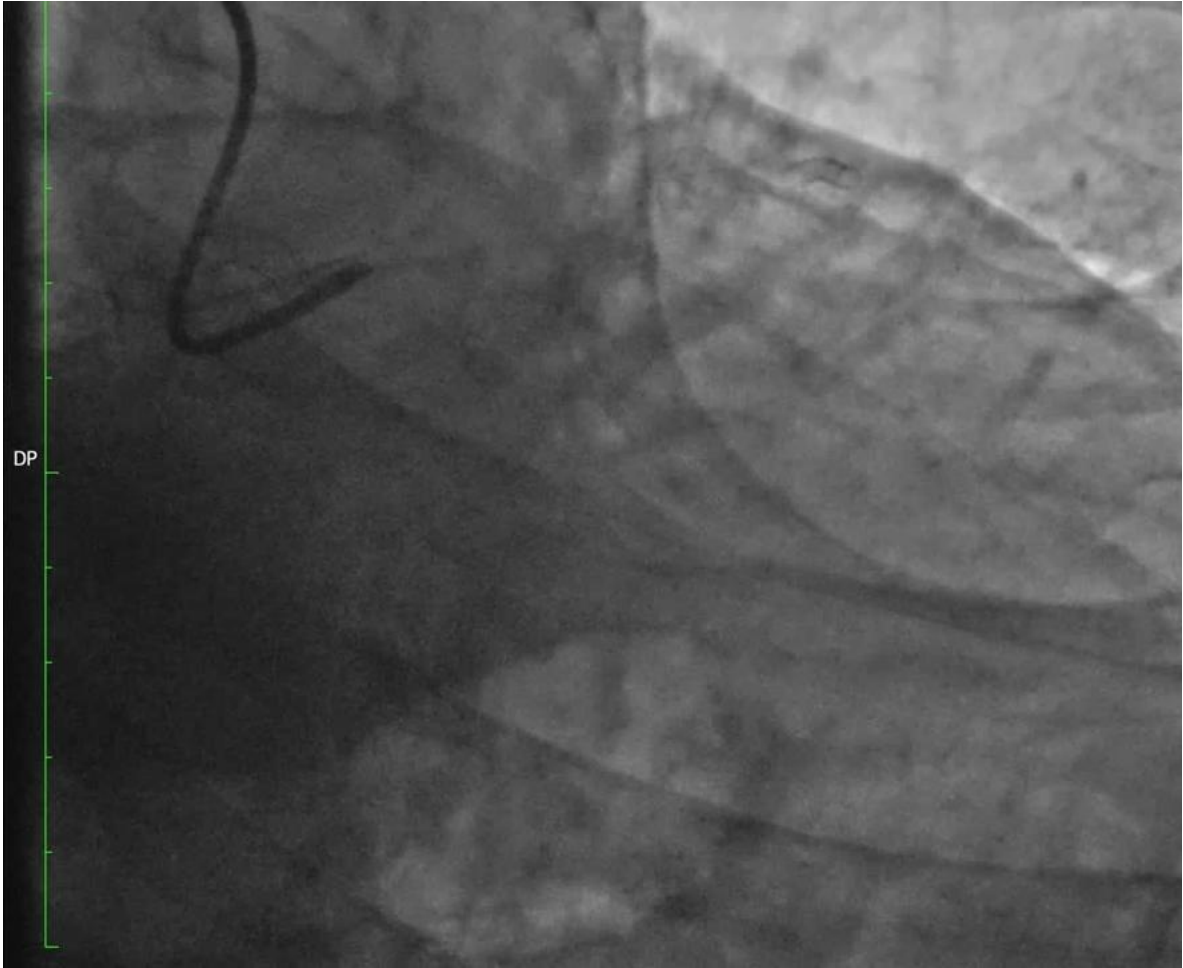
Consecutive Jailed- and Kissing-Corsair Technique:
Side Branch Protection and Dilation during Stent Implantation



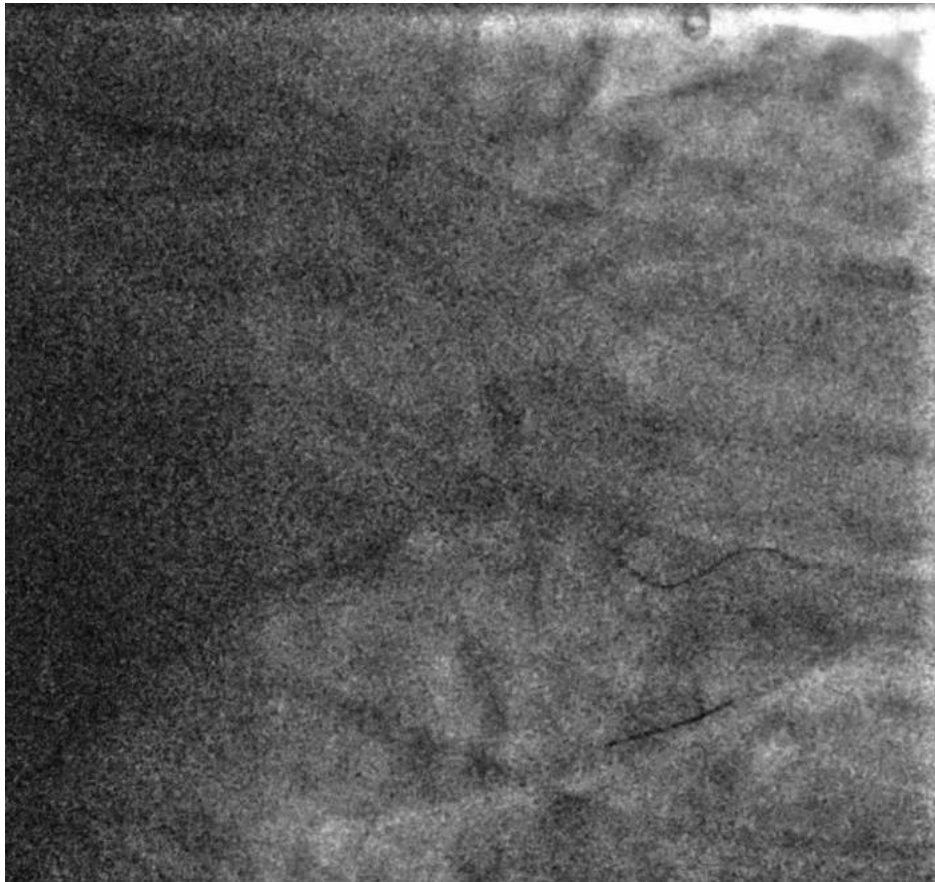
Accès difficile branche fille ... CAT

***Franchir au guide ...
lequel et quelle préformation ?***

***Utilisation des micocathéters double
lumière***

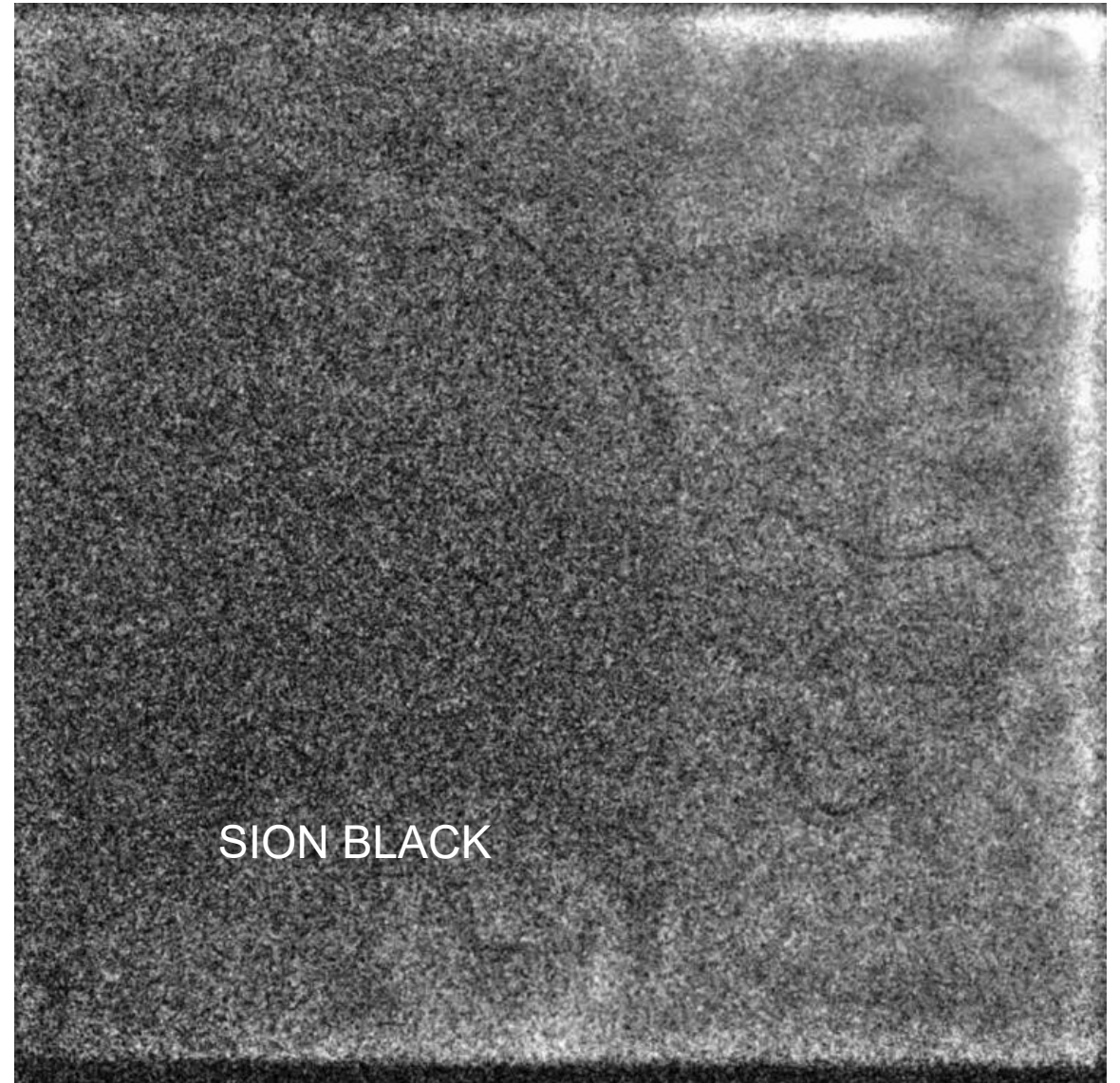


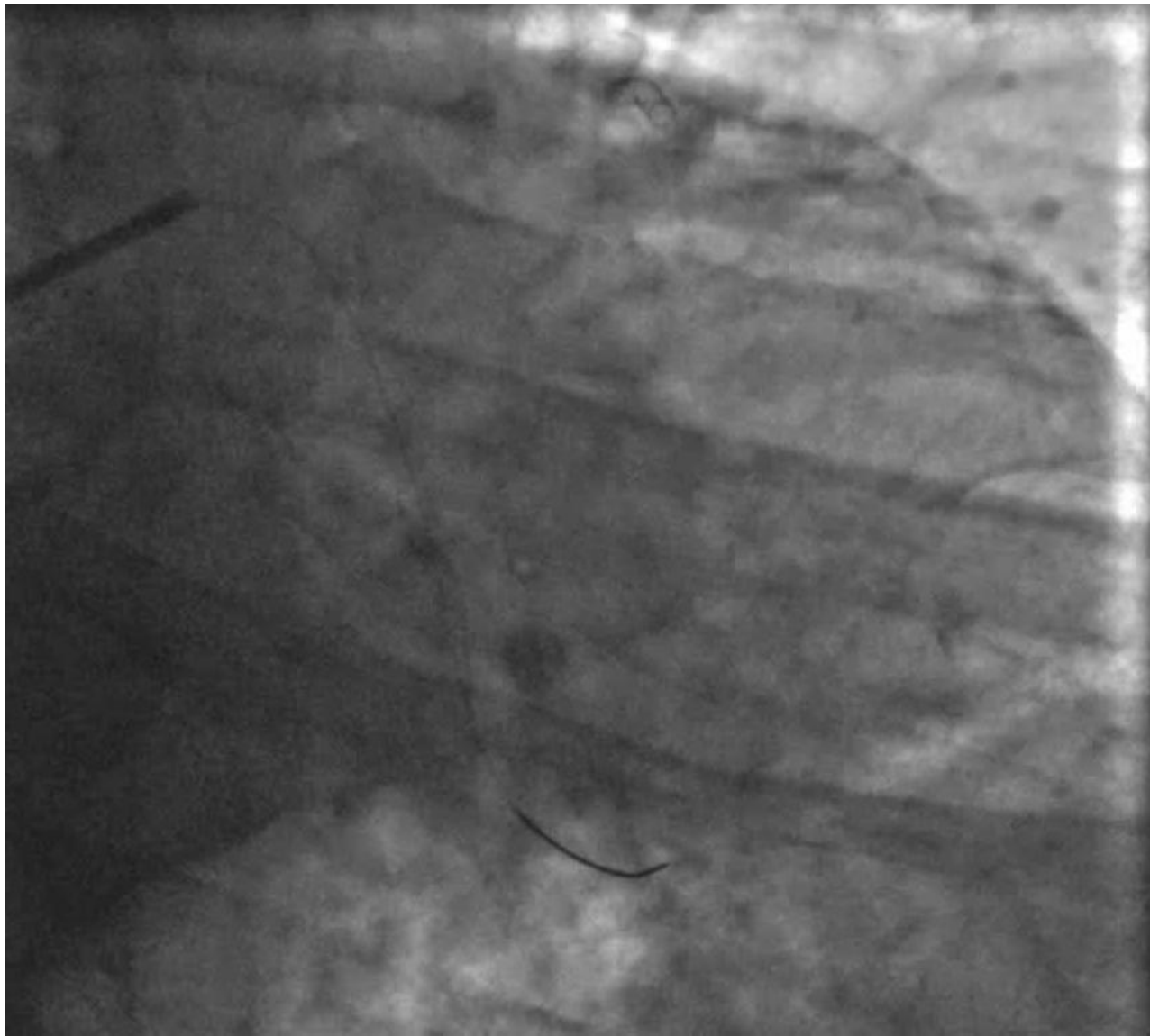
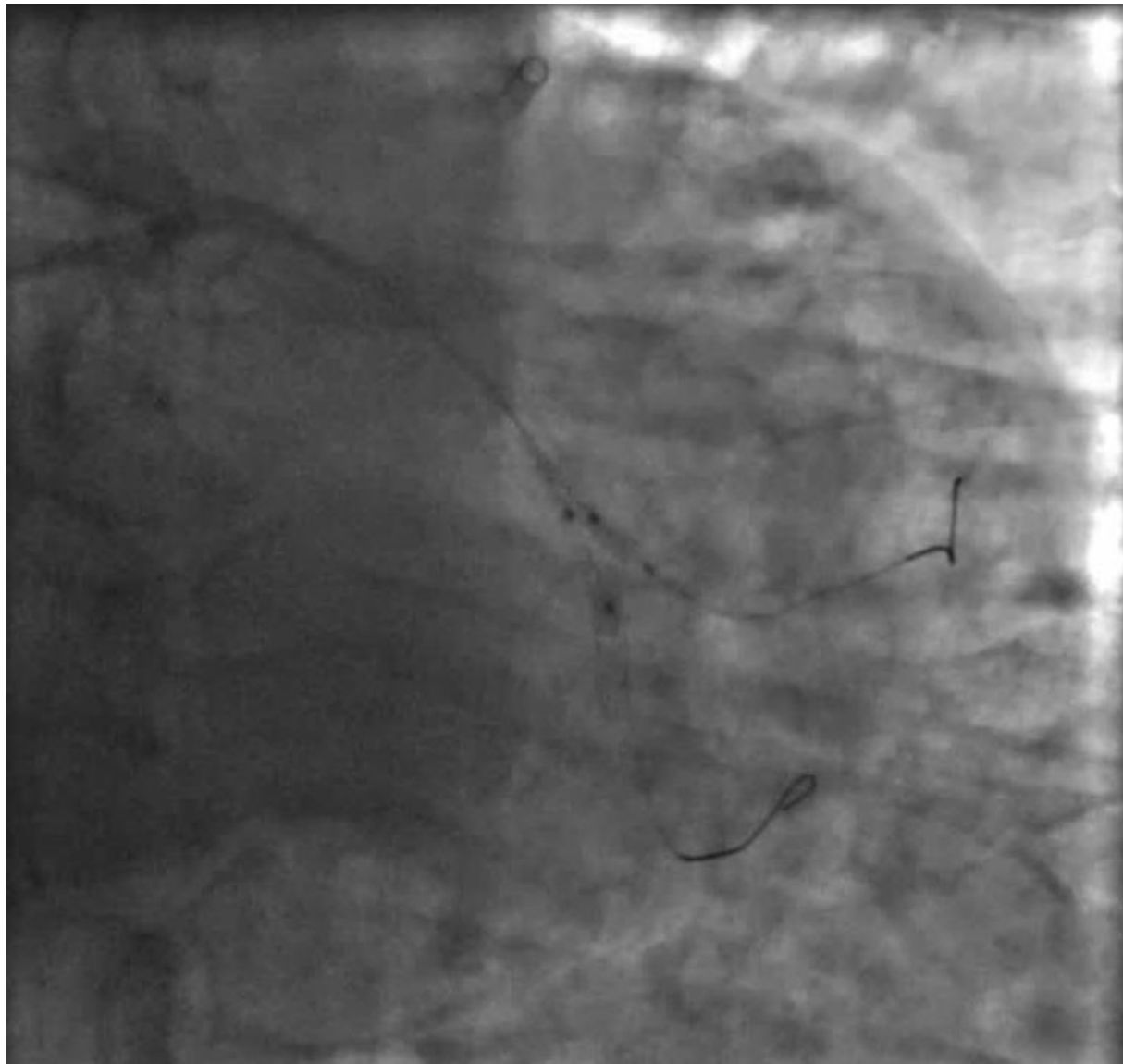
POT +++

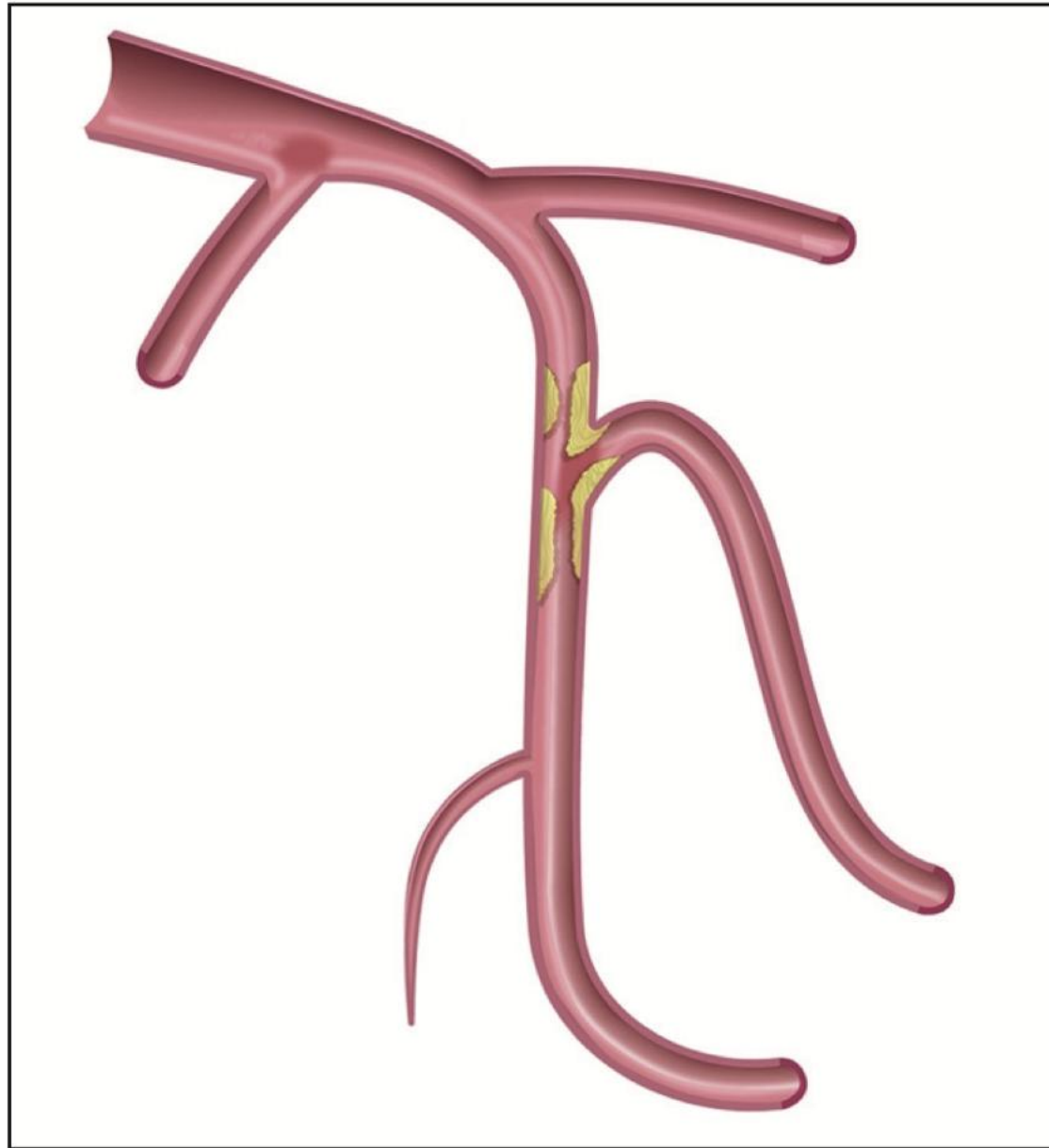


Refranchir au guide ...

Utiliser un micocathéter double lumière

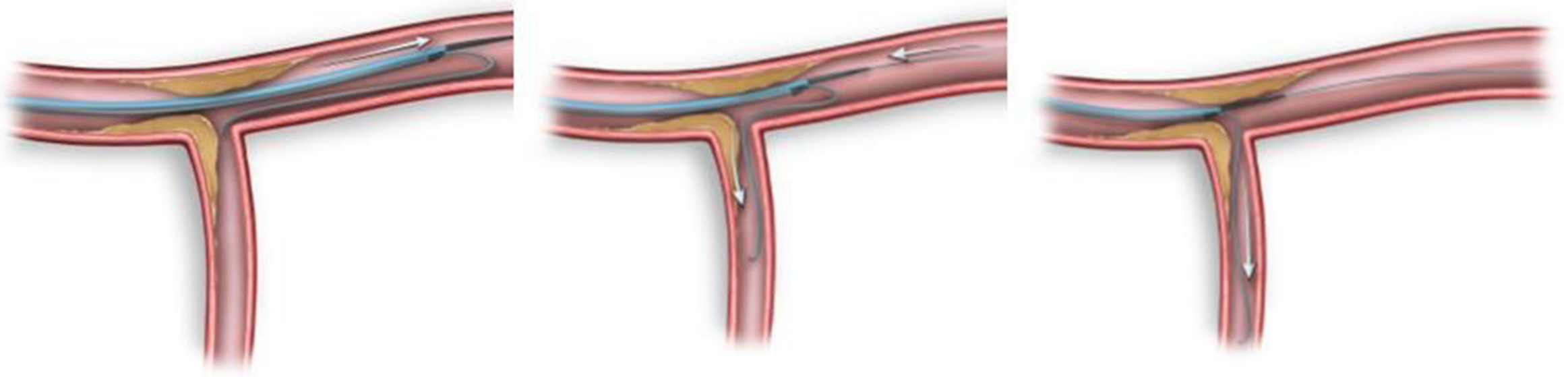


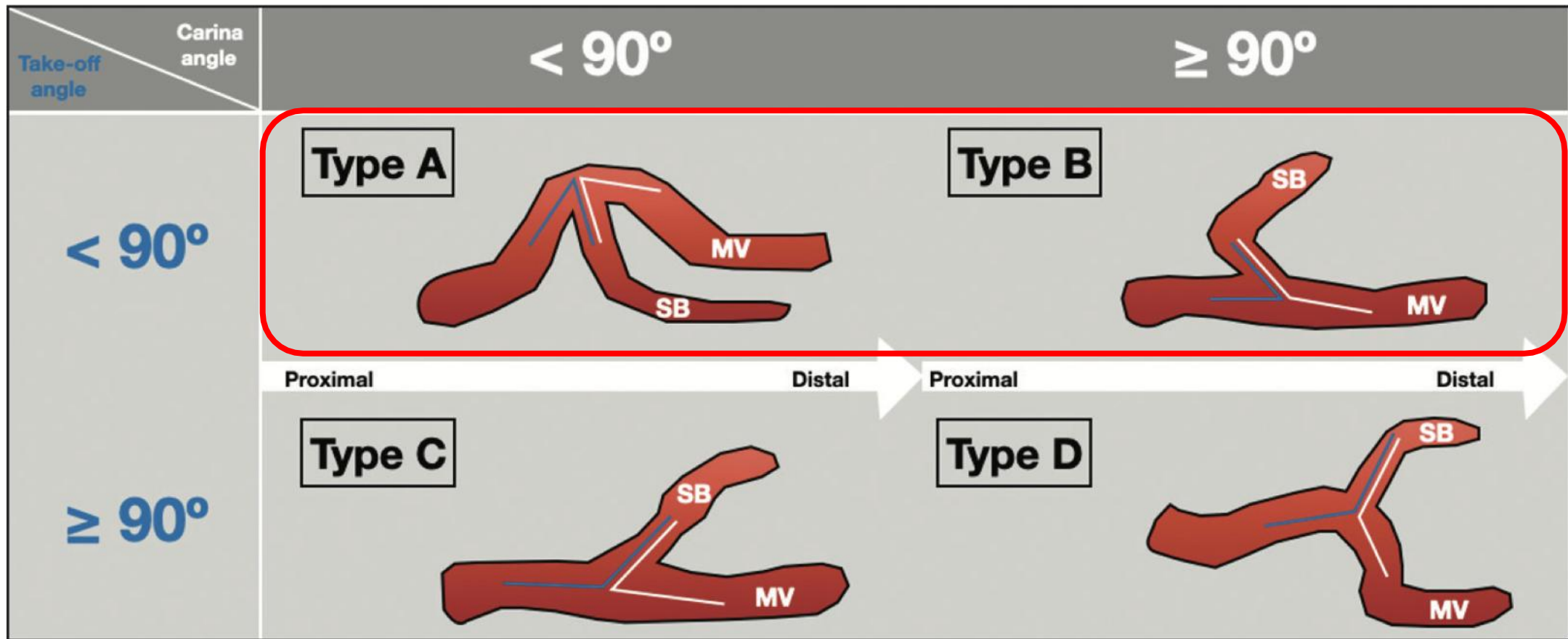




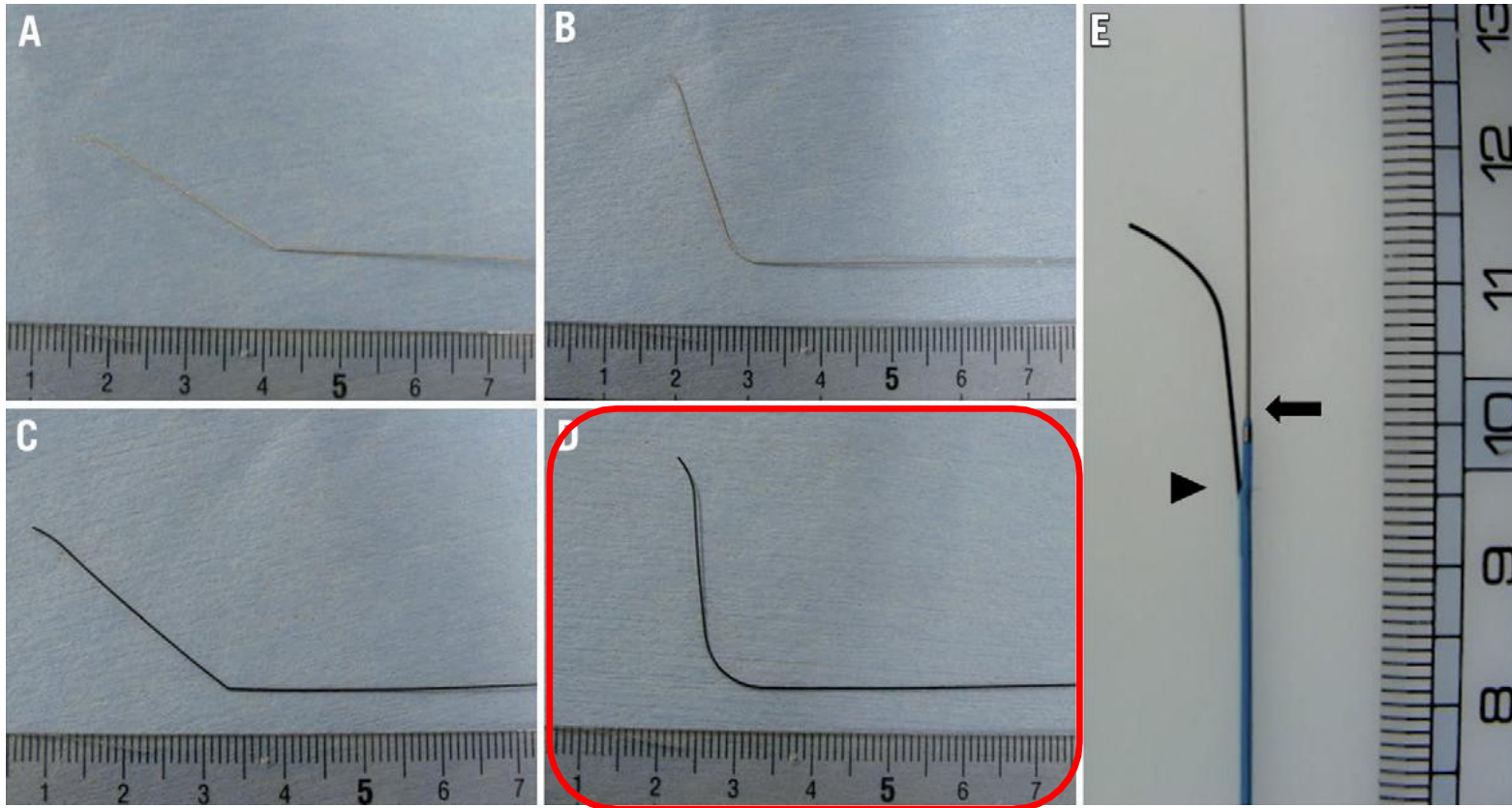
Accès difficile branche fille ...

Reverse wire avec microcathéter double lumière





Type A et B les plus favorable pour reverse wire

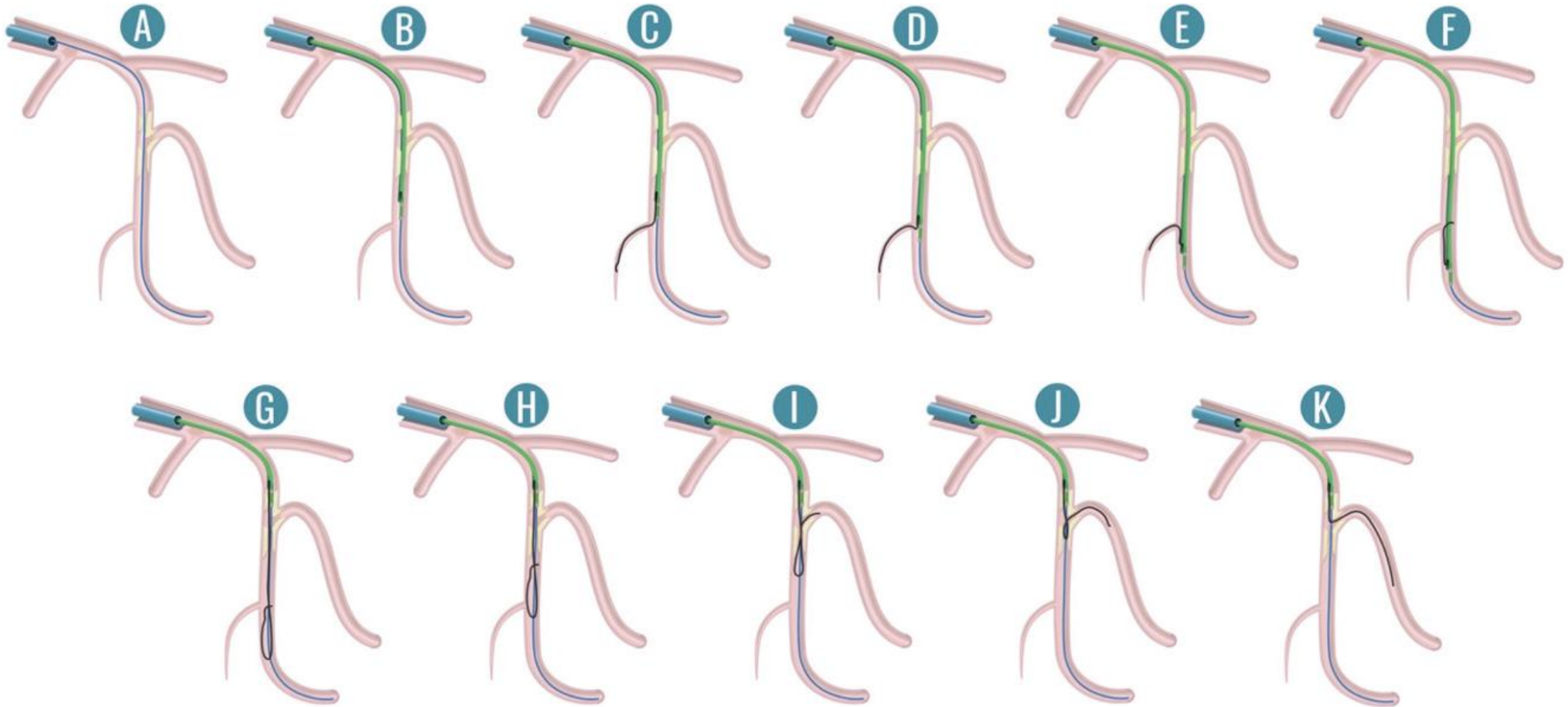


A) SION blue avec angle à 3 cm du tip. B) SION blue avec angulation arrondie

C) Fielder FC avec angle à 3 cm du tip D) Fielder FC avec angulation arrondie

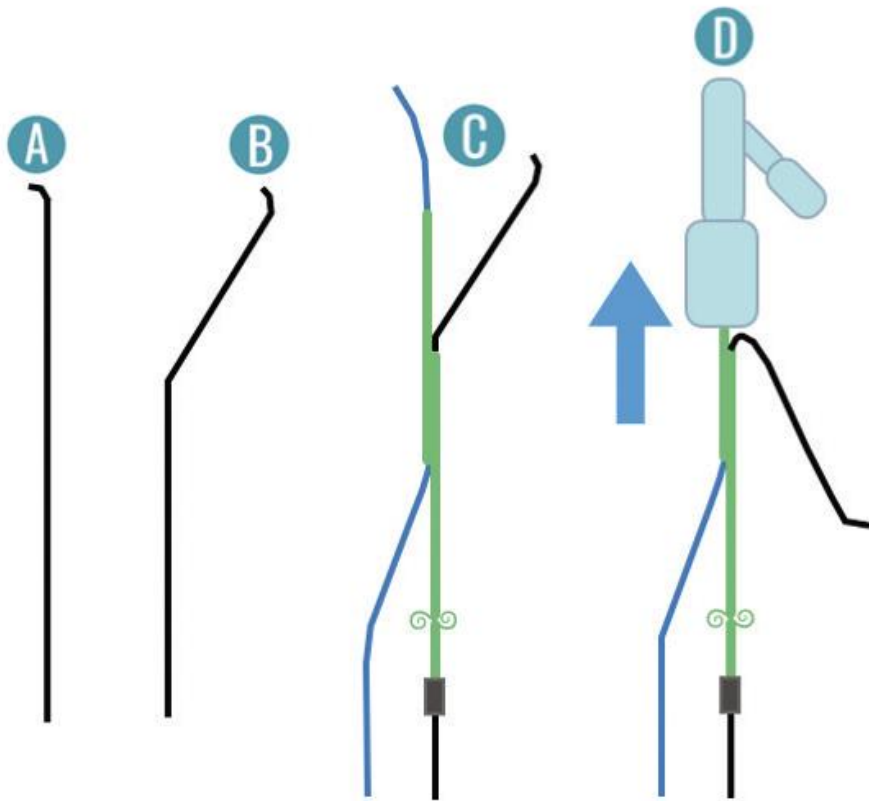
Le plus efficace : guide polymérique avec coating hydrophile
type Fielder FC - ***Sion Black***

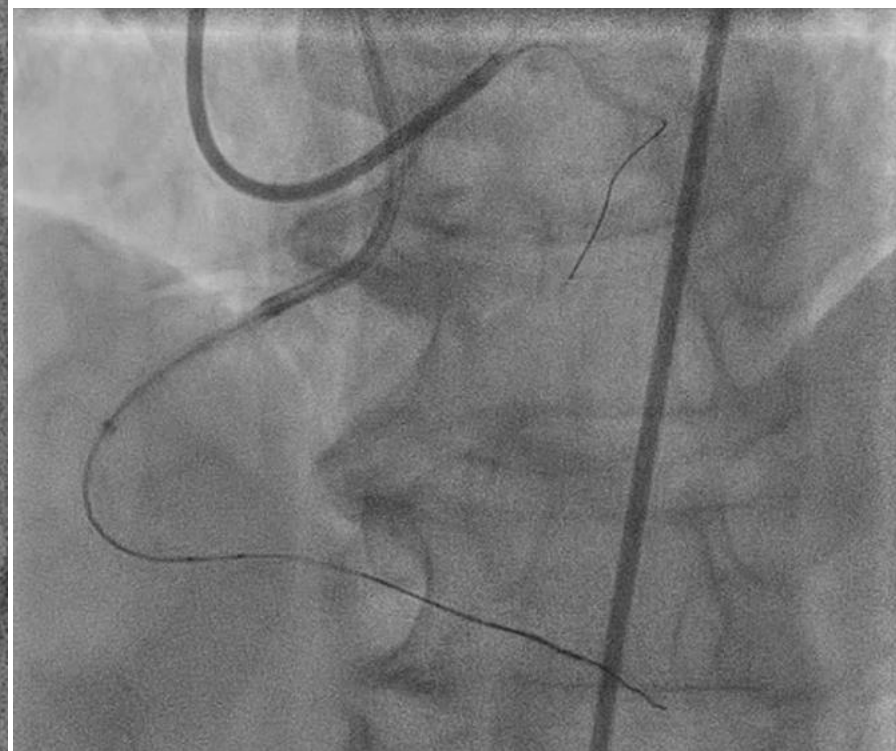
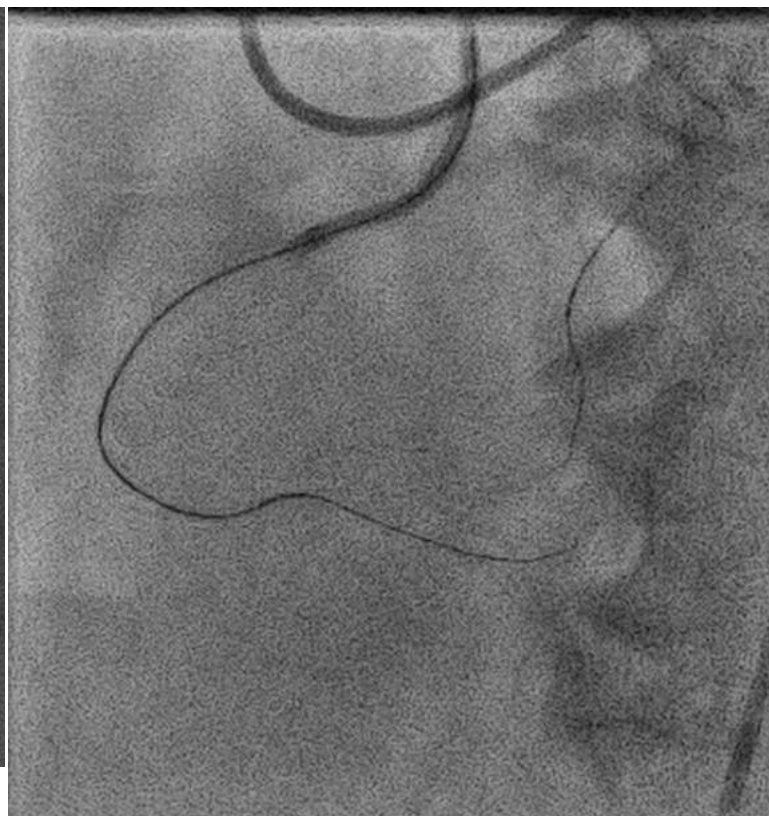
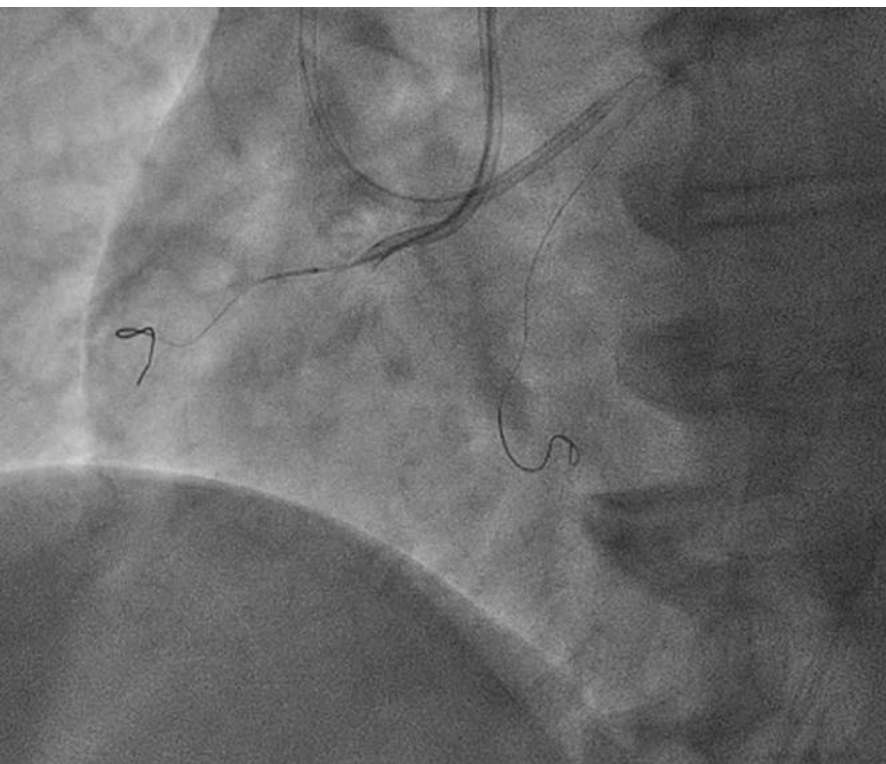
***Reverse wire avec microcathéter double lumière:
utilisation d'une collatérale***

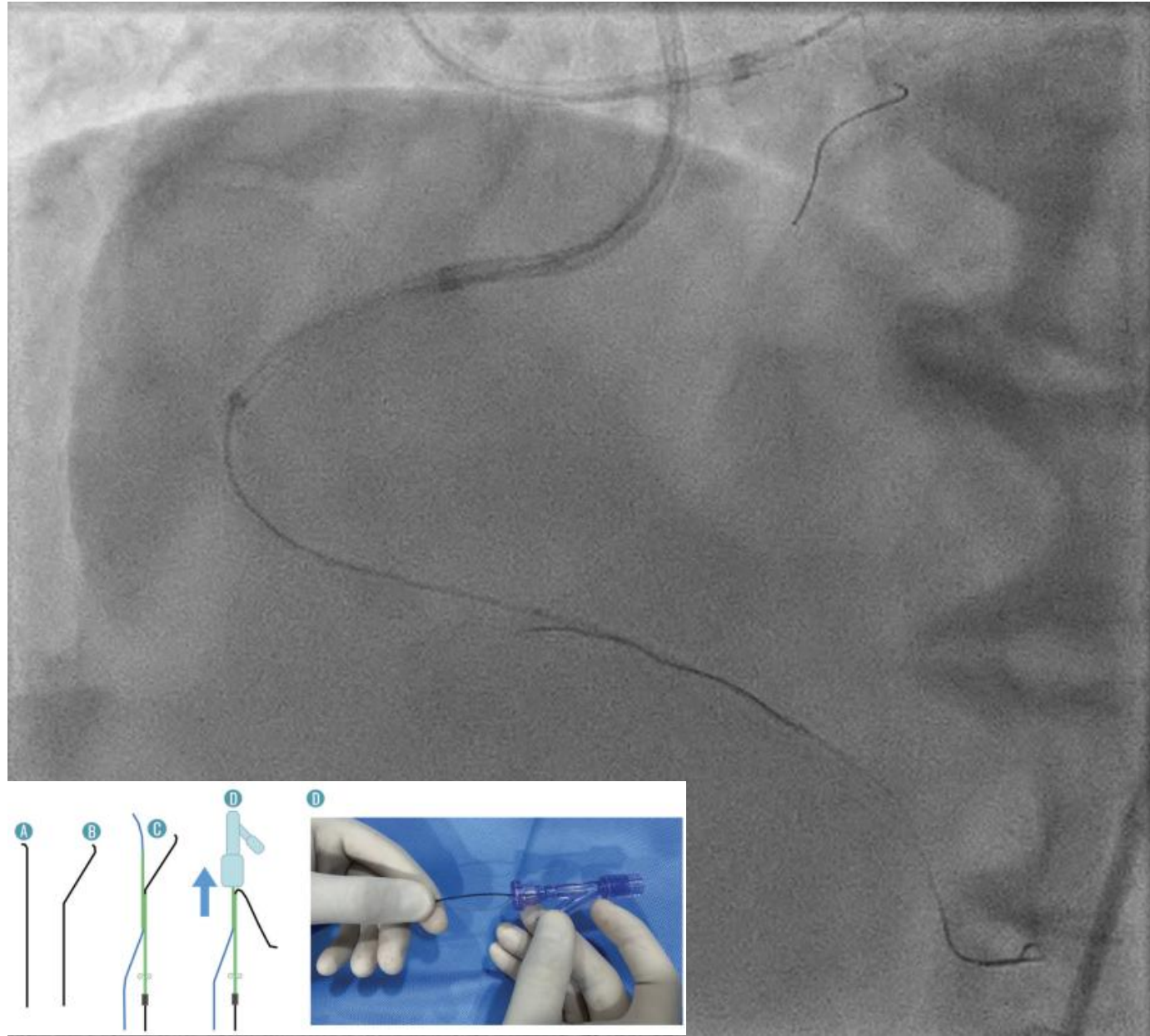


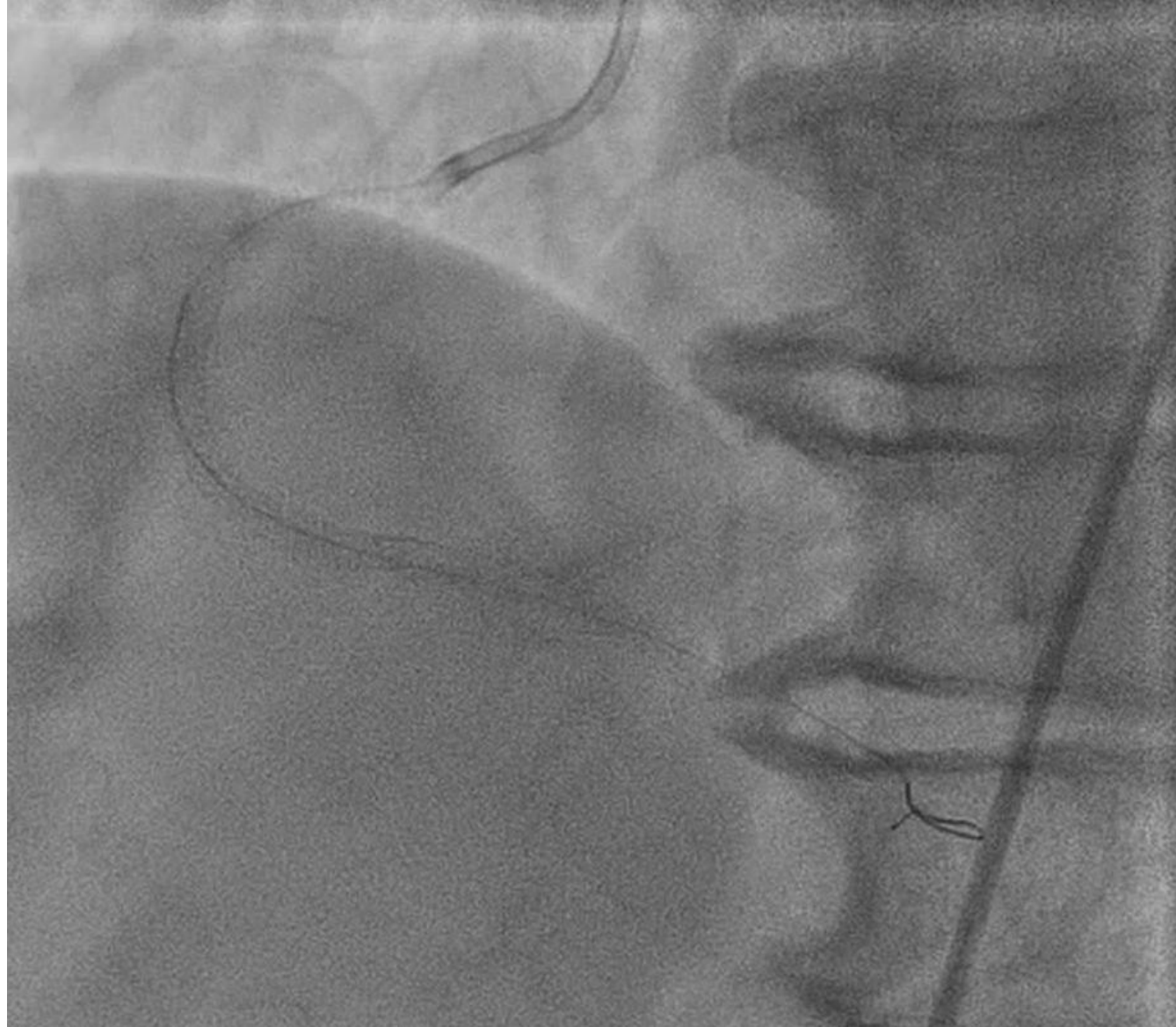
3) Reverse wire avec microcathéter double lumière:

Préformation en angle en utilisant le port latéral



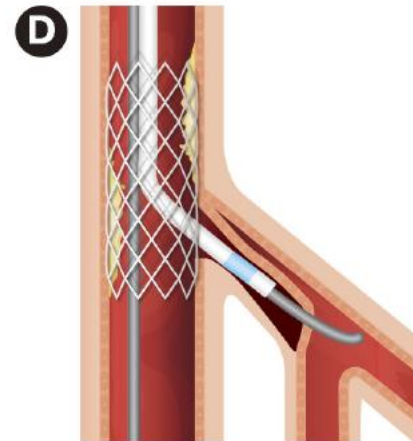
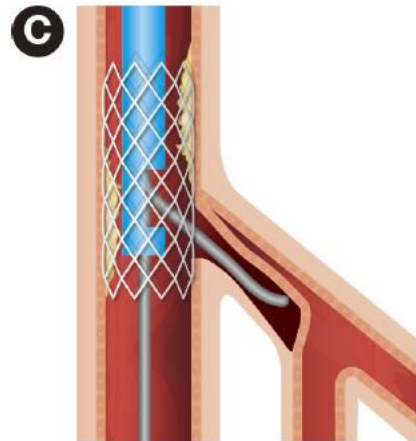
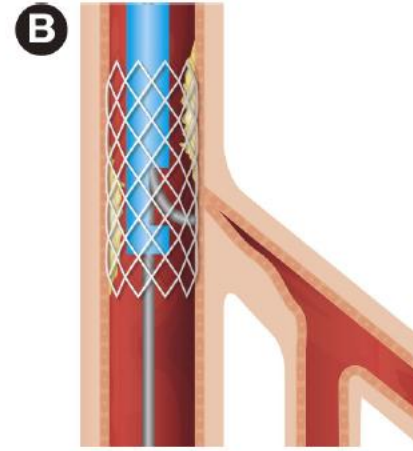
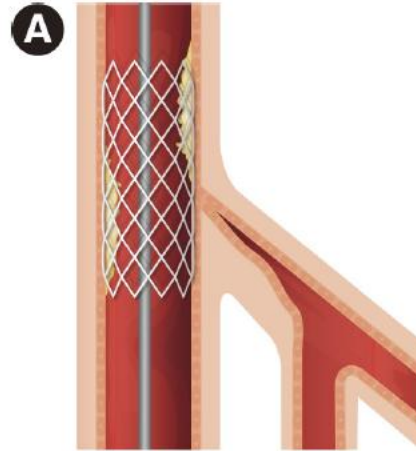




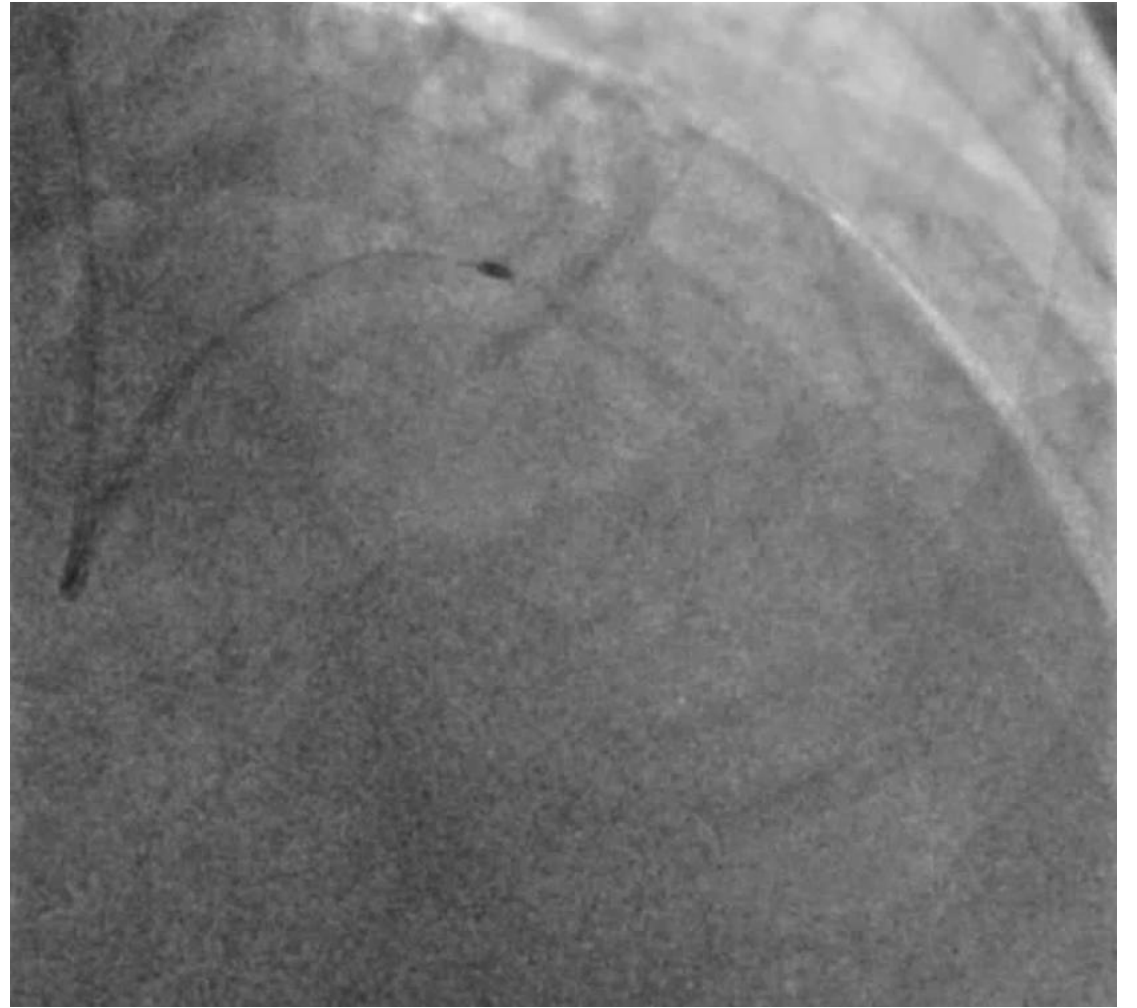


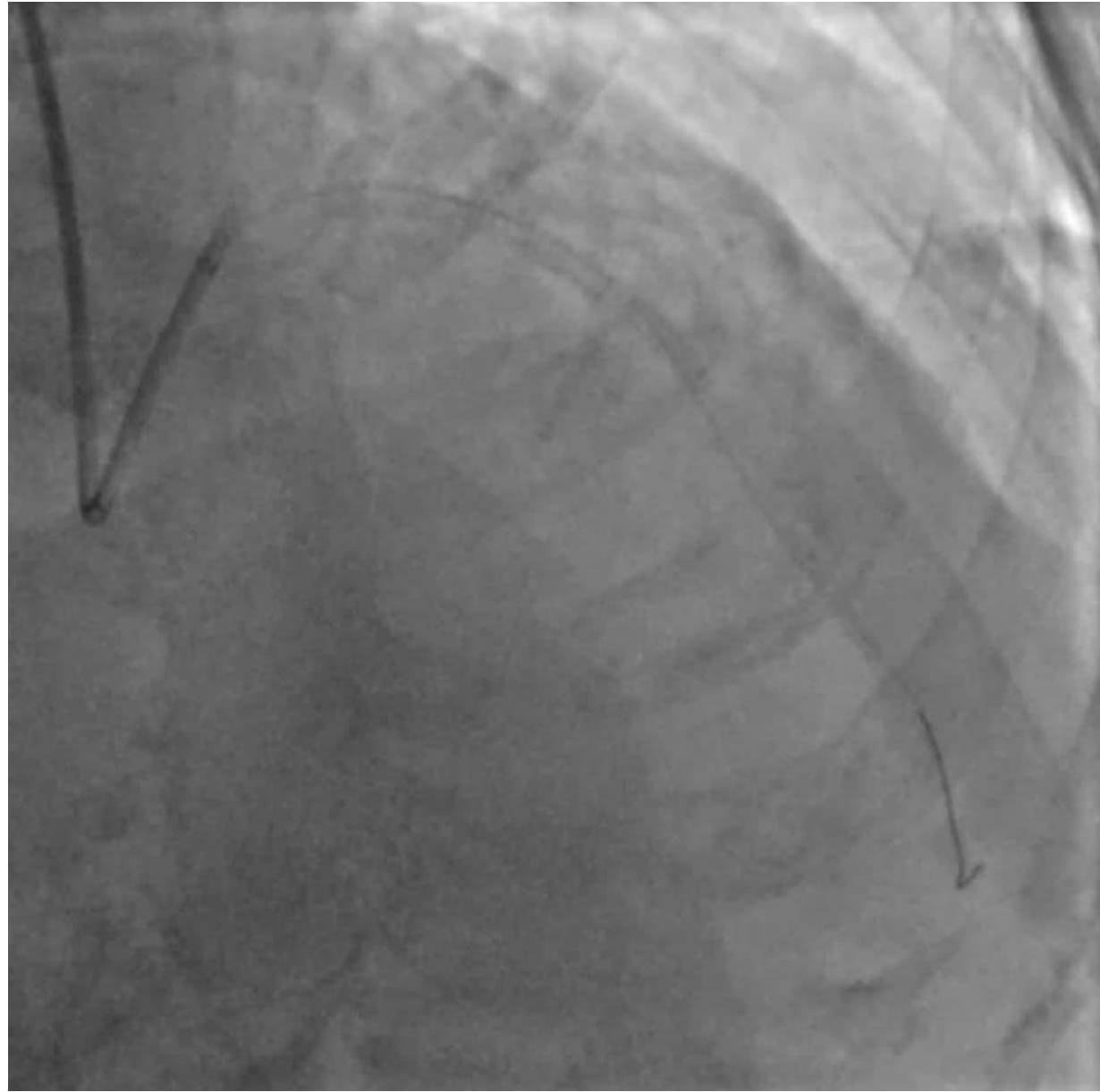
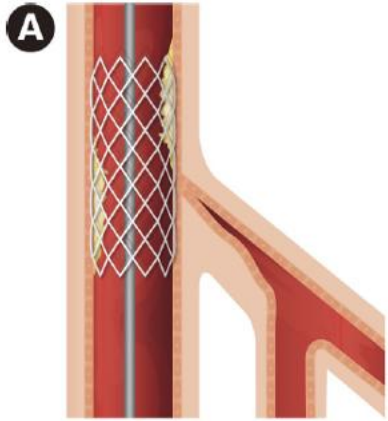
Dissection réentrée STAR

Subintimal Tracking and Re-entry Technique



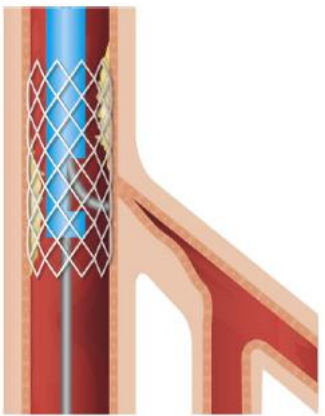
GAIA
next
Gladius
Miracle 6





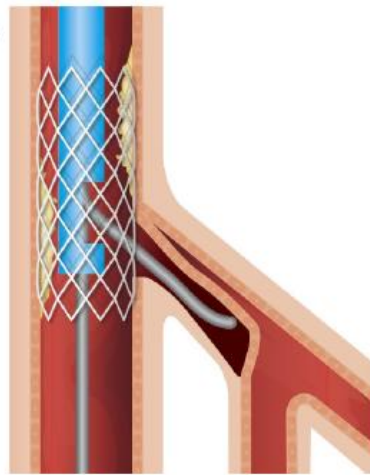
Gladius EX 14

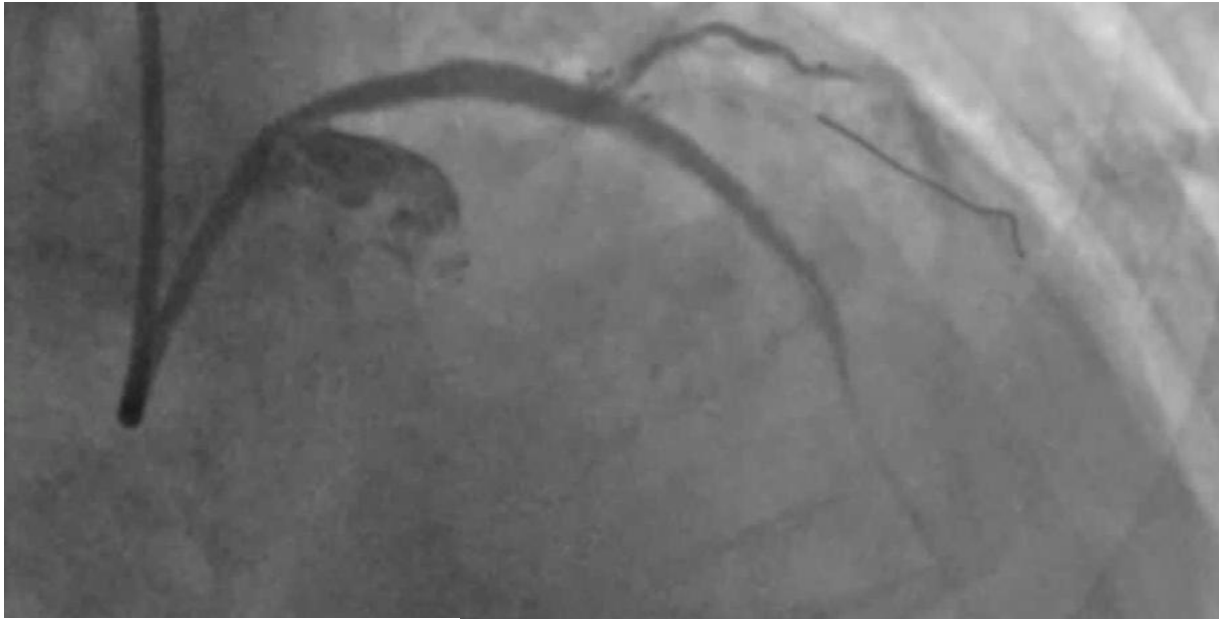
B



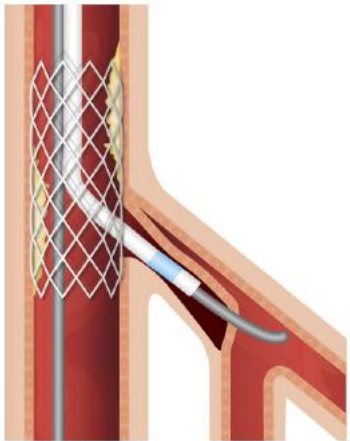
Gladius EX 14

C

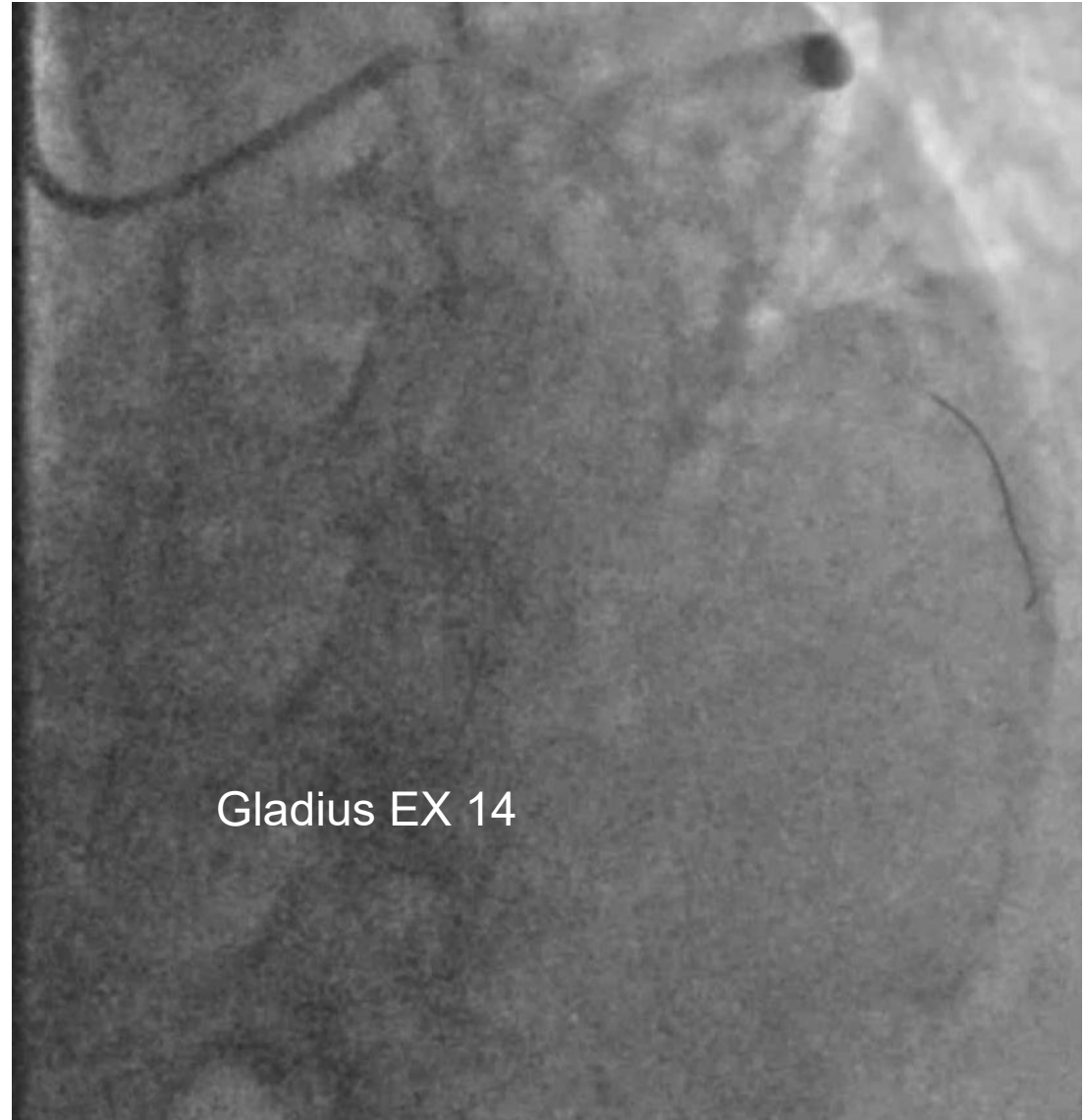




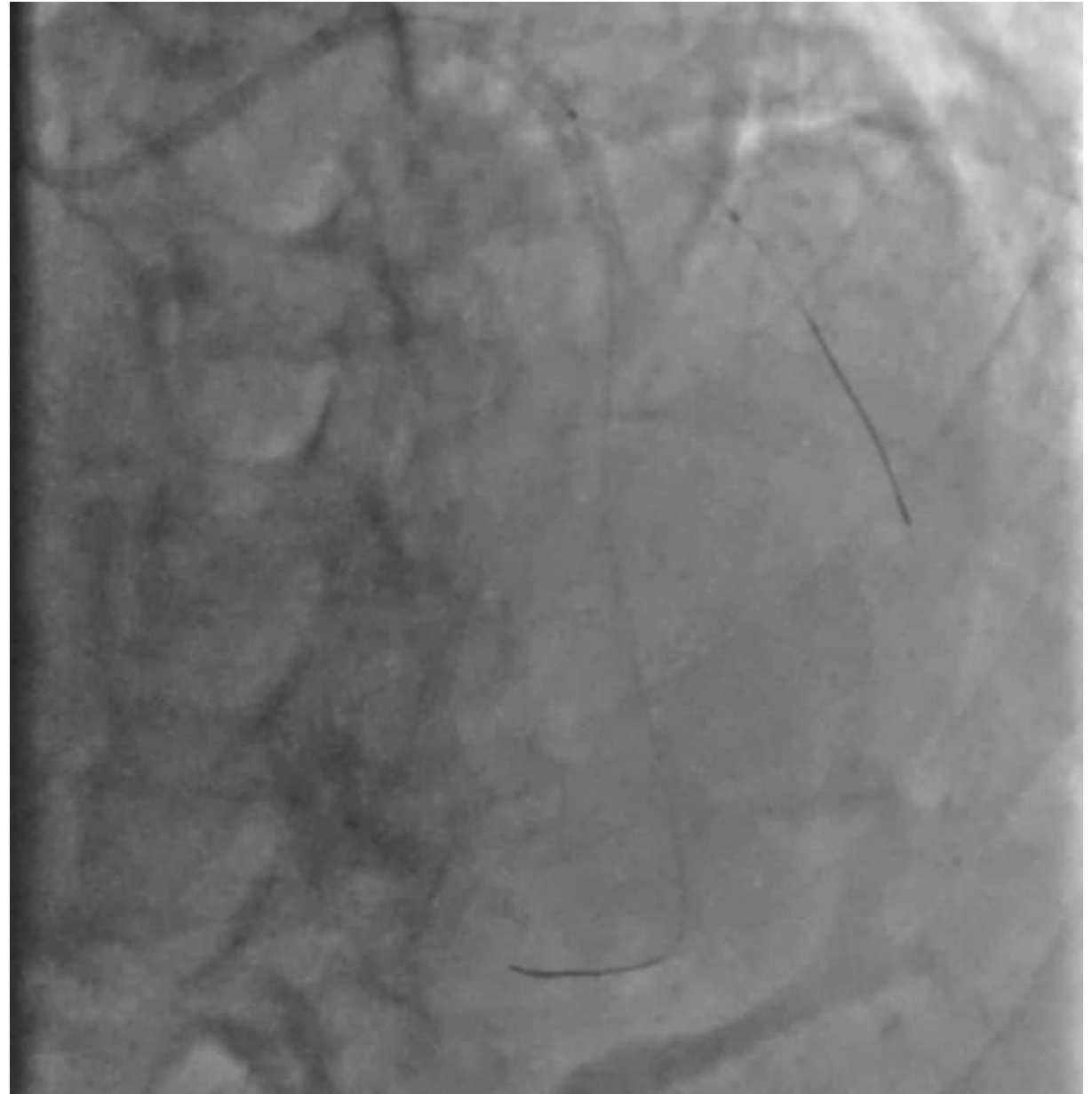
D



Gladius EX 14



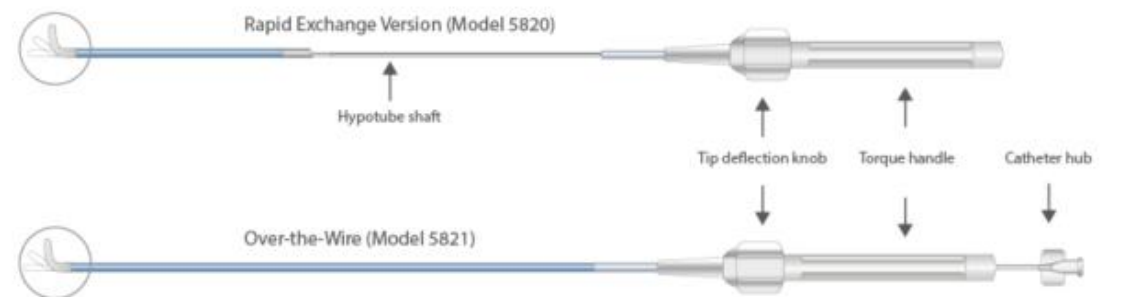
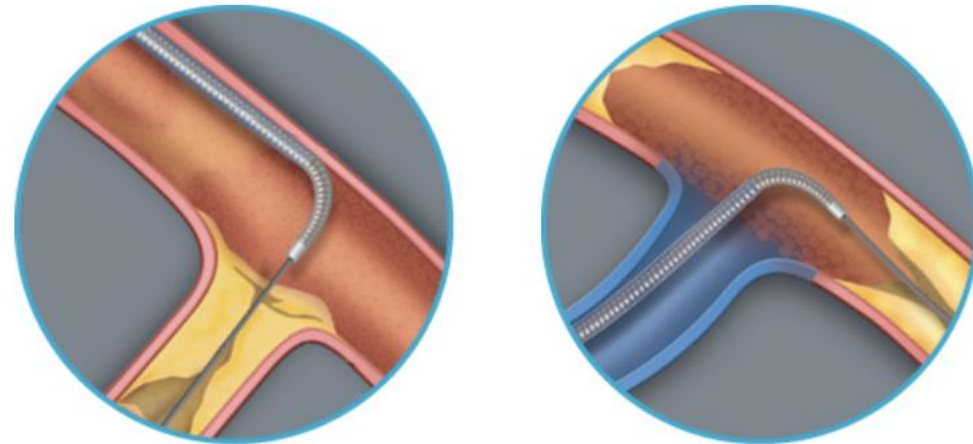
Gladius EX 14



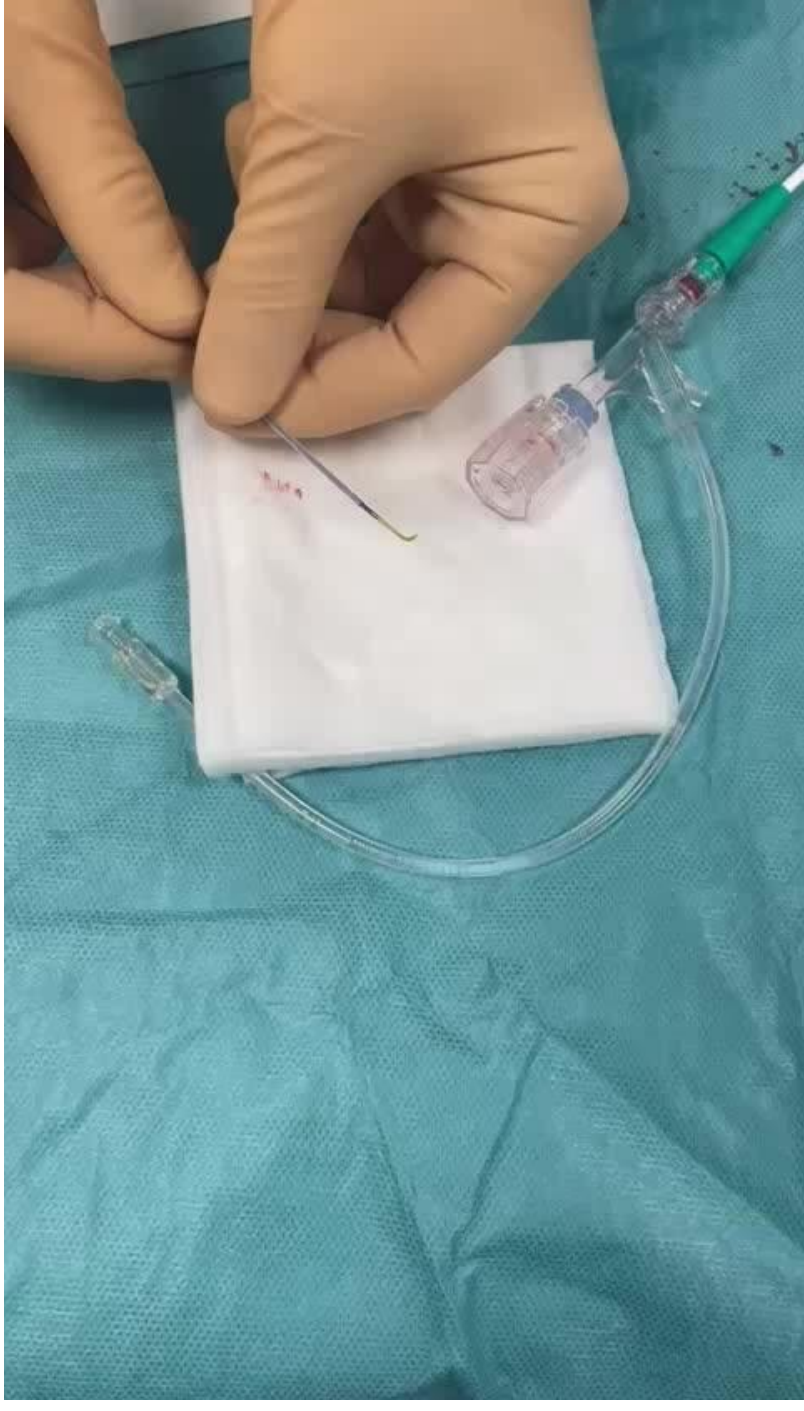
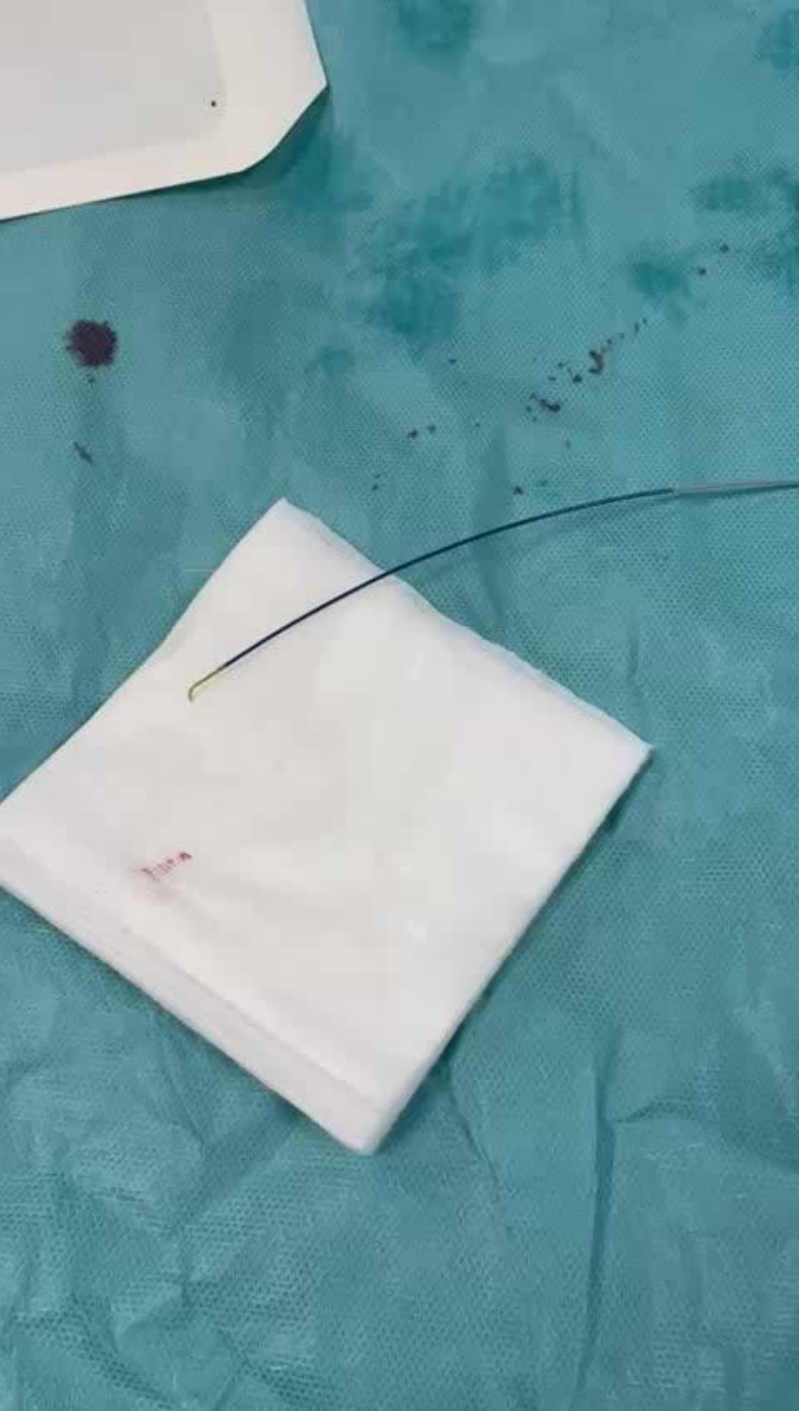


Accès difficile à la branche fille ...

Microcathéter angulé



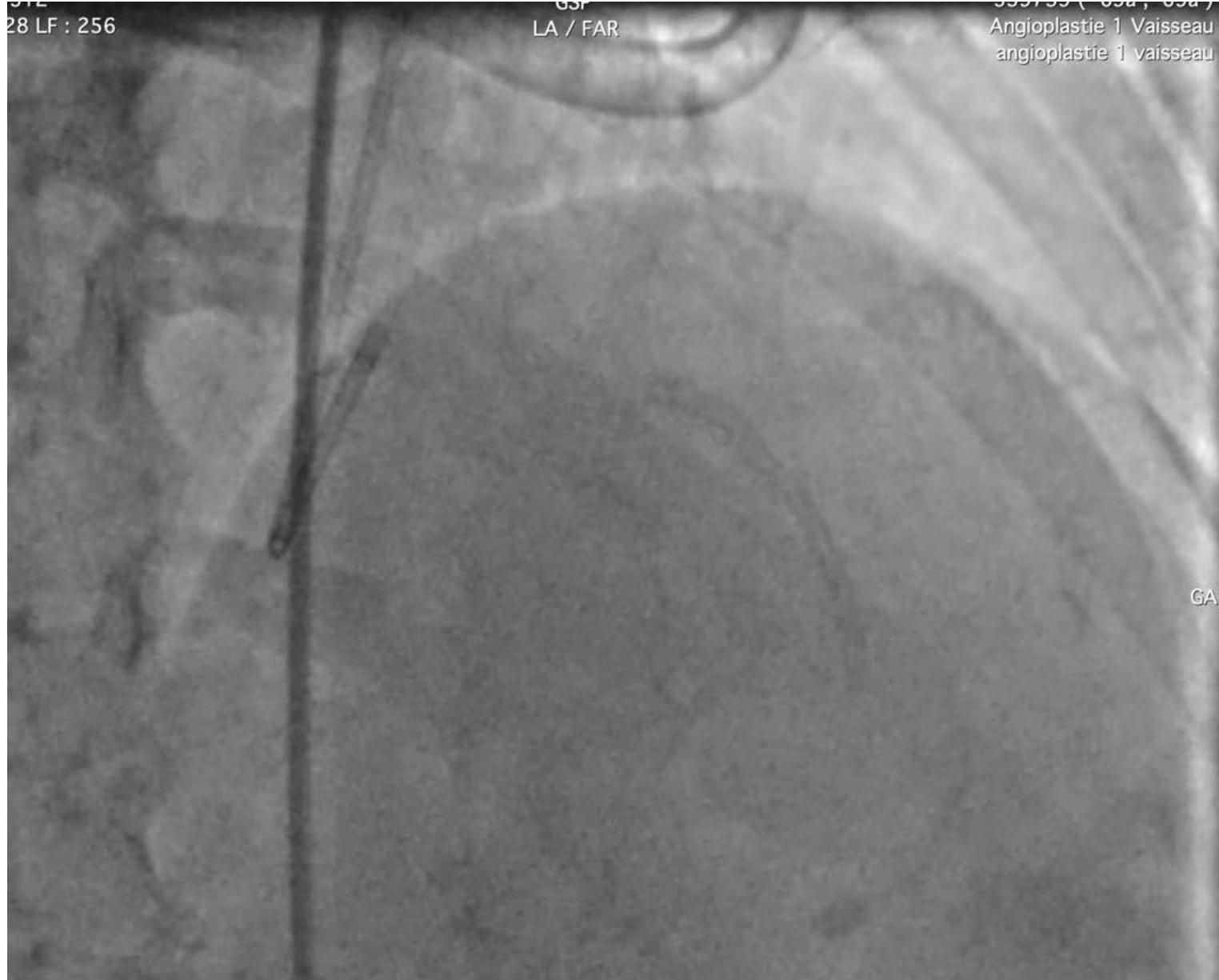
Venture® 0.014"



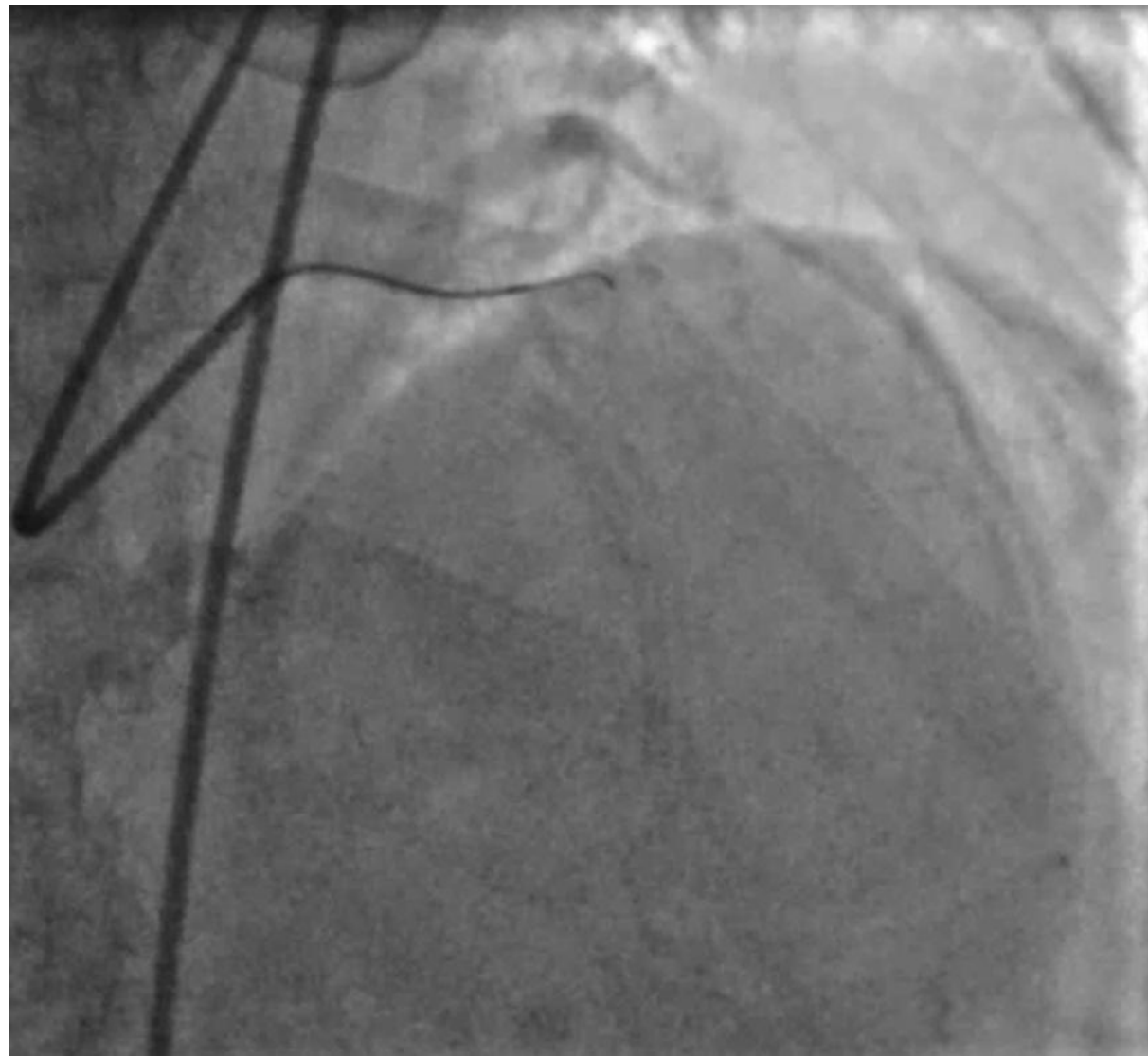
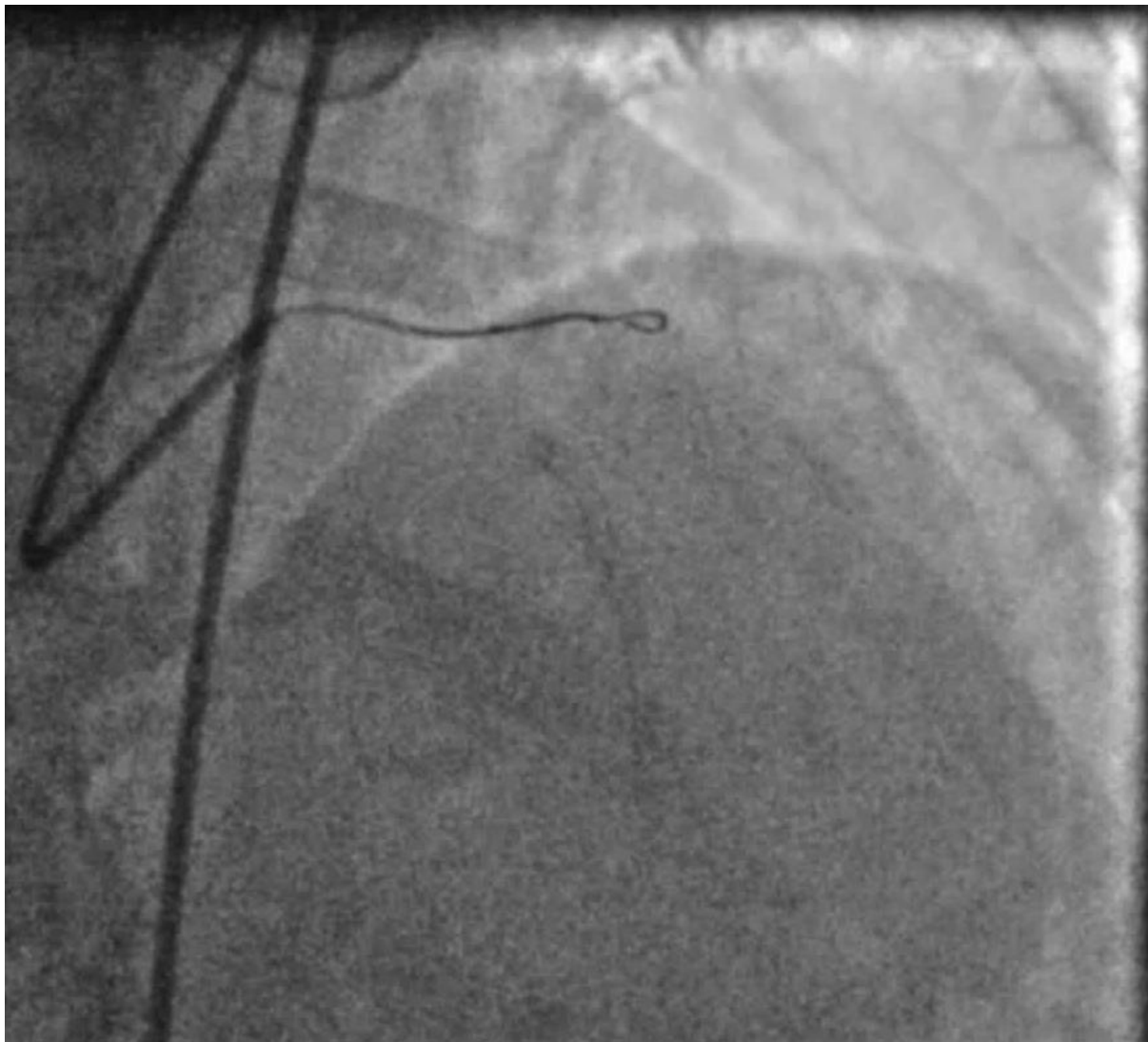
012
28 LF : 256

USI
LA / FAR

339733 (63a , 63a)
Angioplastie 1 Vaisseau
angioplastie 1 vaisseau



GA





CONCLUSION

Accès difficile à la branche fille

- POT +++
- Microcathéter double lumière
- Utiliser Guide polymérique coating hydrophile préformation 3 cm angulation arrondie
- Reverse wire (en utilisant les collatérales ou insertion 180° dans la valve)
- STAR
- Microcathéters angulés

